



# PBS-SEPM NEWSLETTER

January 2022

**President's Letter—** 2  
Continuing  
Transitions

**Call for** 3  
**Volunteers**  
**Board updates**

**PBS-SEPM** 4  
**Luncheon location**  
**change**

**PBS-SEPM** 5  
**January**  
**Luncheon, Speaker:**  
**Dr. Guy Plint Title: “**  
**Themes in Western**  
**Canada Foreland Ba-**  
**sin Stratigraphy”**

**Membership** 6  
**Consider joining if**  
**your not already a**  
**member**

**PBS-SEPM** 7  
**Merchandise**

**Digital & Hard** 8  
**Copy Library**  
~Publication  
Highlight~

**PBS-SEPM** 9  
**Publication: V.5**  
Carbonate Well Log &  
Core Data Analysis  
Spreadsheet

**Corporate &** 10  
**Individual**  
**Sponsors**  
We appreciate your  
generosity

**PBS-SEPM** 11  
**Sponsorship Tiers**  
**& PBS-SEPM**  
**Executive Board**  
2021-2022

**About PBS-SEPM** 12  
Wendell J. Stewart  
Scholarship Fund &  
Robert Read Fund



## KEY DATES For January 2022

### JANUARY 2022

- 11th : SPE PB Luncheon, Petroleum Club of Midland
- 18th: PBS-SEPM Luncheon, Planetarium at the Museum of the Southwest & Virtual, \ 11:30am-1pm
- 25th: SPWLA Luncheon, Virtual

**Young Professional and Intern Field trip**

**June 9-12 2022**

**More information coming soon**

## President's Column

## January President's Letter

Happy New Year! My only wish for this year is that we travel back in time to the year 2019 before the world fundamentally changed. This year we have some exciting events upcoming! We are bringing back the YPE/Intern field trip in early June that has been cancelled the last 2 years due to COVID. We are currently working with candidates for the upcoming TRRC election and hopefully will be bringing them in to discuss the issues and the future of Oil and Gas in Texas. I am particularly excited for our continuing luncheon technical talks this year. We will be offering speakers from all different disciplines of Geoscience discussing a wide range of thought-provoking topics.

Here is to a great new year and excitement for things to come!

PBS-SEPM President

*Dan Scott*





# Volunteer with PBS-SEPM!



If you are interested in volunteering with PBS-SEPM,  
below are the Board Positions and Committees

## Board Positions

President-Elect  
1<sup>st</sup> Vice President  
2<sup>nd</sup> Vice President  
Treasurer  
Secretary

## Committees

Nominating  
Honorary Life  
Stratigraphic  
Scholarship  
Core Location  
Dedicated Service Award  
Distinguished Lecturer Series

Webmaster  
Publicity  
One Day Field Trip Young  
Professionals Field Trip  
Lunch Arrangements  
Luncheon Program  
Speaker Award  
Publications

Please email us at [info@pbs-sepm.org](mailto:info@pbs-sepm.org) to get more details about the position  
or committee.



**PBS-SEPM Luncheon \*\*\*\* LOCATION CHANGE**

***Planetarium at the Museum of the Southwest***

1705 W. Missouri Ave., Midland, TX 79701



## PBS-SEPM Luncheon Talk – January 18, 2022



### PBS-SEPM Technical Luncheon 1/18/2022, 11:30 AM, Museum of the Southwest Blakemore Planetarium

**\$25 Early Bird Rate, \$30 at the Door or \$10 BYOL/Virtual**  
RSVP by 1/14/2021 to [info@pbs-sepm.org](mailto:info@pbs-sepm.org) or online at [www.pbs-sepm.org](http://www.pbs-sepm.org)



### Themes in Basin Foreland Stratigraphy

*Dr. Guy Plint –Geology Professor at Western Science University*

#### ABSTRACT:

Thirty-five years of subsurface and field investigation of mid-Cretaceous strata in the Western Canada Foreland Basin have revealed a number of recurring stratigraphic and sedimentological features that reflect large-scale, allogenic controls on basin subsidence and filling. Before the late 1980's, coarse-grained tongues extending into the foredeep were interpreted to correspond to phases of active uplift in the adjacent fold and thrust belt, whereas mudrocks represented tectonic quiescence and lower relief. Numerical models, such as Flemings and Jordan (1989) inverted this thinking, showing that active tectonic loading resulted in rapid flexural subsidence, when coarse sediment was trapped at the proximal basin margin, and a thick wedge of mud accumulated across the basin centre. Only when the rate of loading, and subsidence, diminished, were sandy deltaic systems able to prograde far into the foredeep. The observed facies and stratal geometry in Western Canada strongly support this model prediction. Thick wedges of mudrock record rapid subsidence whereas thin sheets of sandstone and conglomerate record a low accommodation rate that allowed extensive coastal progradation. A still-popular model of Western Interior bathymetry (e.g. Kauffman, 1984) includes an 'axial basin' up to 500 m deep. Western Canada stratigraphy shows no evidence of an 'axial basin': The sea floor formed an extremely low-gradient, storm-influenced ramp no more than a few tens of meters deep. Flexural models of foredeep subsidence typically show a linear foredeep parallel to the orogenic belt. This picture may be true when viewed on a timescale of tens of myr. However, when stratigraphy is resolved on timescales of 1 myr or less, it is clear that subsidence occurs in arcuate 'moats' that reflect temporally and spatially localized loading along c. 200-300 km sectors of the orogen. Within each 'moat' stratal geometry shows an upward change from short blunt wedges to thin sheets. This pattern is interpreted to reflect an initially rapid, then diminishing subsidence rate linked to initially rapid thickening of the adjacent fold and thrust belt, followed by slow erosional degradation. Orogen-proximal areas of the foredeep are typified by aggradational muddy floodplain and fine-sand dominated anastomosed river systems, punctuated, on a 105 yr timescale, by paleovalleys filled with medium sand to conglomerate. The recurrence interval, length, and coarser-grained fill of valleys cannot be explained solely by sea-level changes. Changes in rainfall over the Cordillera, paced by Milankovitch-scale climate cycles, offer a more reasonable explanation for valley incision and filling, and advance and retreat of the gravel front in rivers.



**BIOGRAPHY:** Guy Plint received a BSc from the University of Reading in 1977 and a DPhil from the University of Oxford in 1981. Postdoctoral fellowships at the University of New Brunswick (1981-84) and McMaster University (1984-86) were followed by appointment to the faculty of the University of Western Ontario (1986-present). He has conducted 37 field seasons in Western Canada, supervised 33 graduate theses, and published over 90 papers on the Cretaceous rocks of the Western Canada Foreland Basin.





## Why Join or Sponsor PBS-SEPM?

- Help provide Geoscience scholarships
- YP/I Field Trip led by disciplined professionals
- Professional field trips led by topical experts
- Annual Core Workshops
- Monthly technical luncheon series
- Networking opportunities
- Special member pricing on publications

*Only \$25 to join!*



# If you are not already a member, consider joining today!

**PBS-SEPM is the Permian Basin Section of SEPM—the Society for Sedimentary Geology.**

**However, you do not need to be a SEPM member or a geologist to join PBS-SEPM.**

PBS-SEPM prides itself on its success in providing high caliber speakers as well as exceptional core workshops and field trips. PBS-SEPM also provides scholarships to graduating high school students in western Texas and New Mexico. These scholarships are on occasion, offered to college students that have declared their desire to pursue a degree in the geosciences. Through continued support from the industry, PBS-SEPM can continue to provide excellent educational opportunities for the oil and gas industry.

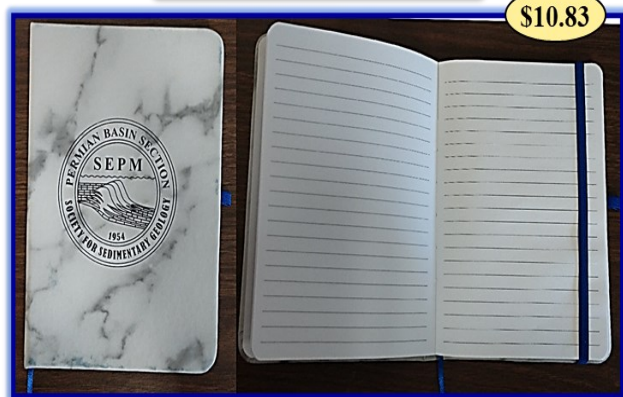
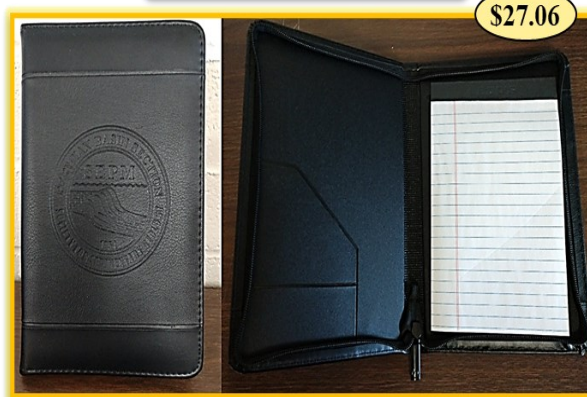
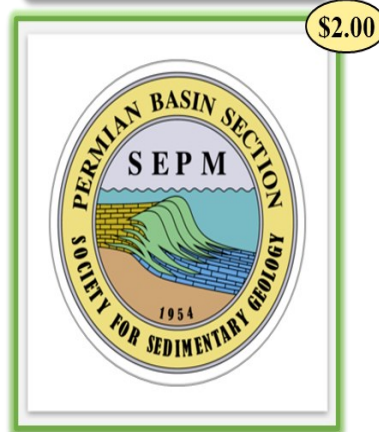
**If you would like to join PBS-SEPM, you may visit our website to learn more about us, download a membership form, and learn how to get involved.**

**Visit our website today to join, or sign up at one of our luncheons.**  
**[www.pbs.-sepm.org](http://www.pbs.-sepm.org)**

## PBS-SEPM Merchandise



# PBS-SEPM Merchandise

**MARBLE NOTEBOOK****LEATHER PADFOLIO****TUMBLER****VINYL STICKER**

## TO PURCHASE ANY OF THESE ITEMS CONTACT:

PBS-SEPM office (432) 279-1360 or [info@pbs-sepm.org](mailto:info@pbs-sepm.org) and available at all Luncheons

Payment: check, cash or online with credit card

Make checks payable to PBS-SEPM & send order form to: PBS-SEPM, 2900 Front St, Midland, TX, 79701

To purchase online, click [HERE](#) and pay with credit card

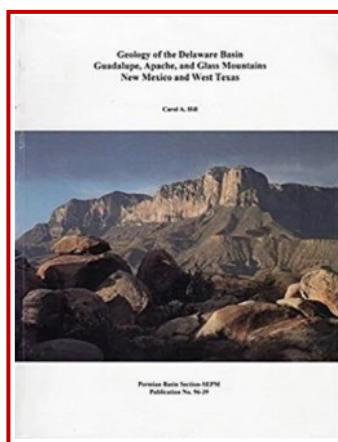
## PBS-SEPM Publications

**PBS-SEPM PUBLICATION HIGHLIGHT**

**“Geology of the Delaware Basin, Guadalupe,  
Apache & Glass  
Mountains NM & West TX**

**96-39**

[\\$35.00 Members \\$40.00 Non-Members](#)

**Entire PBS-SEPM publication library (1955 – 2007)**

There is a fully searchable Table of Contents—find a topic or author just by typing in the word(s). All publications are in Adobe PDF with all major articles being bookmarked, and all the figures are linked in the text for quick reference. Those areas that are off limits to geologists like the Glass Mountains or Sierra Diablos have been written up in these publications. Numerous out-of-print publications and figures and/or plates not published in the original guidebooks are now available in this library.

**DVD I - Symposiums & Guidebooks (1955-1989)**

Member- \$125.00 plus 8.25% tax and \$5.00 shipping and handling  
Non-Member- \$150.00 plus 8.25% tax and \$5.00 shipping and handling

**DVD II - Symposiums & Guidebooks (1990-2007)**

Member- \$125.00 plus 8.25% tax and \$5.00 shipping and handling  
Non-Member- \$150.00 plus 8.25% tax and \$5.00 shipping and handling

**DVD III - Core Workshops (82, 83, 85, 98) & Special Publications (A, 88-28, 96-39, 84)**

Member- \$125.00 plus 8.25% tax and \$5.00 shipping and handling  
Non-Member- \$150.00 plus 8.25% tax and \$5.00 shipping and handling

**Entire Set of three DVDs**

**Member Price** \$275.00 plus 8.25% tax and \$5.00 shipping and handling  
**Non-Member Price** \$300.00 plus 8.25% tax and \$5.00 shipping and handling

Payment: check, cash or online with credit card

Make checks payable to PBS-SEPM & send order form to: PBS-SEPM, 2900 Front St, Midland, TX, 79701

To purchase online, click [HERE](#) and pay with credit card

For additional information contact: **PBS-SEPM office** (432) 279-1360 or [info@pbs-sepm.org](mailto:info@pbs-sepm.org)

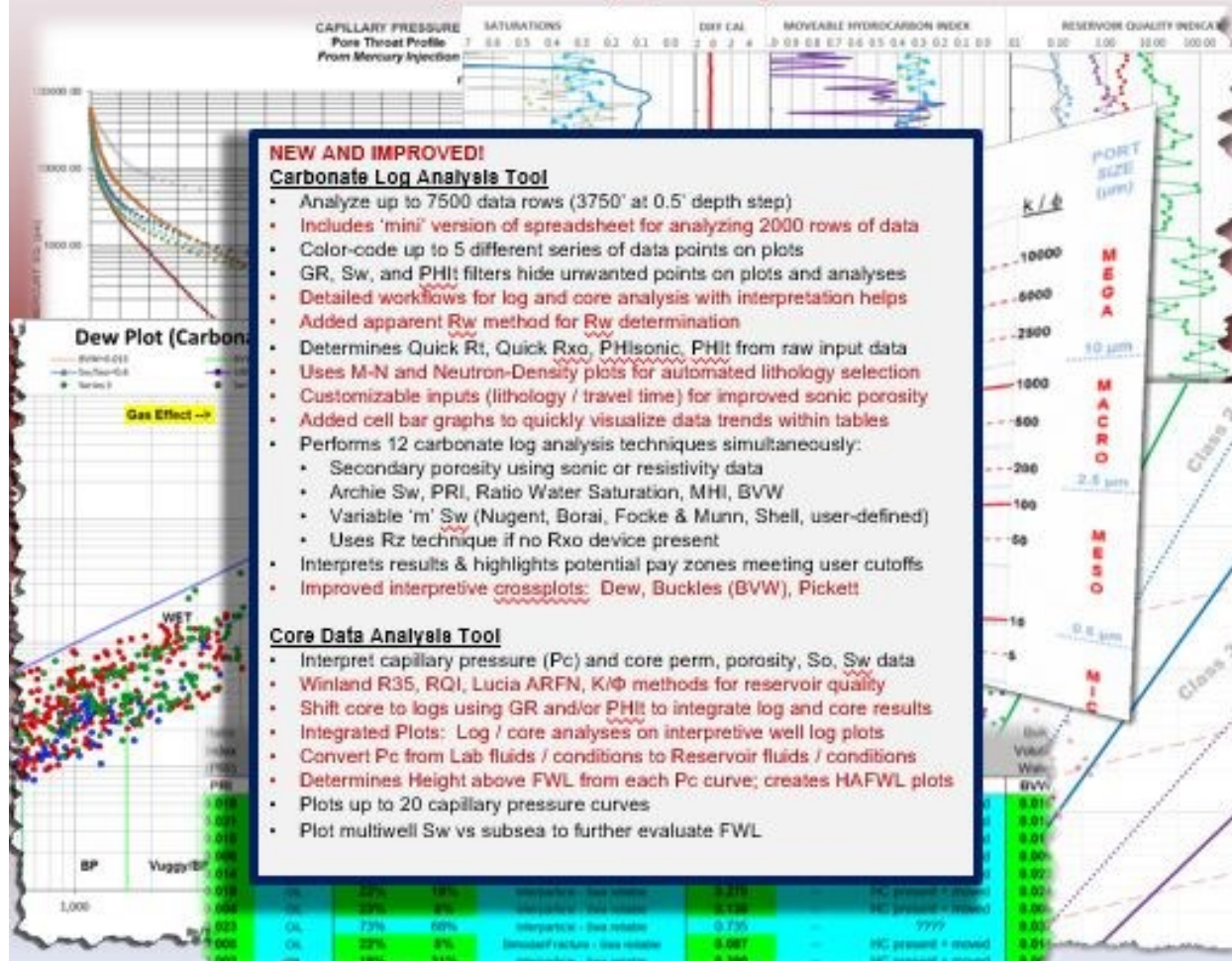




## Carbonate Log & Core Analysis Spreadsheet v. 5.0 By Cory L. Hoffman, Ph.D.

**Major Upgrade (January 2020)! [Designed for Microsoft Excel 2013]**

Carbonate Log analysis draws heavily upon teachings of George Asquith  
Core Data analysis draws heavily upon teachings of Dan Hartmann



We would like to thank, **Fox Pest Control**, a local Midland-Odessa Company, who have decided to sponsor with PBS-SEPM. They like to sponsor local organizations that are making a difference in their service area.

# FOX

## PEST CONTROL

## Corporate Sponsorships (2021-2022)

PBS-SEPM is grateful for the generosity of these fine corporate sponsors !

### Platinum Sponsor




**BERYL**  
OIL AND GAS



Your  
Company  
Logo  
could be in  
our  
newsletter  
showing  
your  
support of  
PBS-  
SEPM.

Your  
support  
lifts your  
corporate  
name  
within the  
Permian  
Basin.

## Individual Sponsors of PBS-SEPM (2021-2022)



**MARS EXPLORATION AND ENERGY, LLC**

Michael A. Raines, President  
CPG #6308, TxBPG #1506

Contract Reservoir Geology Services      Mike@MarsExp.com  
(432) 934-7202

- Waterflood Studies
- Enhanced Oil Recovery
- Carbon Sequestration
- Conventional Reservoirs
- General Permian Basin

1300 South County Rd 1117  
Midland, Texas 79706

***Your Business Card  
Could be here!***

Individual sponsors are advertised on the PBS-SEPM website and each newsletter. Cost is \$50/year. If you are interested in a sponsorship opportunity, please call PBS-SEPM for more details

**GEOMARK**

Stephanie E. Perry  
Chief Petrophysical Advisor  
Petrophysics Consultant  
(832) 532-1028 (Office)  
(518) 428-7130 (Cell)  
[www.geomarkresearch.com](http://www.geomarkresearch.com)  
9748 Whithorn Drive, Houston, Texas 77095



**STRATUM**  
RESERVOIR

DAWN PORTER  
Account Manager

7409 W. Industrial Ave  
Midland, TX 79706

5200 N Sam Houston Pkwy W #500  
Houston, TX 77086

+1 (346) 222-0020 C

dawn.porter@stratumreservoir.com  
[www.stratumreservoir.com](http://www.stratumreservoir.com)



**CONTINENTAL  
LABORATORIES**

Jimmy Bagley  
Business Development Manager

6600 Fairbanks N Houston Rd  
Houston, TX 77040  
[www.continentallabs.com](http://www.continentallabs.com)

jbagley@continentallabs.com  
operations 800.856.0237  
c 832.564.6028





## Sponsorship Information (2022-2023)



*Do you have an idea for an interesting luncheon talk? Have a core workshop you'd like to present? Have some suggestions on how PBS-SEPM can better serve the geologic community? Send us an e-mail to share your idea, your PBS-SEPM Executive Board wants to hear from you!*

### *Become a PBS-SEPM Sponsor and help support your local chapter*

The PBS-SEPM hosts luncheon lectures, core workshops and field trips. We bring in guest speakers from all over the country to discuss current geological topics. Our lecture series, along with core workshops class, and field trips are led by experts in their chosen areas of geosciences.

**PLATINUM** – Your generous support of **\$1500 or more** will provide your company with recognition for two years on the Young Professional Field Trip (YPFT) (including guidebooks and other paraphernalia), core workshops, PBS-SEPM monthly luncheon slides, newsletters, website, and new publications.

**GOLD** – Your generous support of **\$1000** will provide your company with the same level of recognition as above for one year, excluding new publications.

**SILVER** – Your generous support of **\$700** will provide your company with recognition for one year on the core workshop/one day field trip (including guidebooks), PBS-SEPM monthly luncheon slides, newsletters, and website.

**BRONZE** – Your generous support of **\$400** will provide your company with recognition for one year on all PBS-SEPM monthly luncheon slides, newsletters, and website.

**ALUMINUM** – Your generous support of **\$250** will provide your company with recognition for one year on all PBS-SEPM luncheon slides and table tent for one luncheon date.

**INDIVIDUAL** – Your generous support of **\$50** will provide your business card advertised for one year on the PBS-SEPM website and each newsletter.

### **\*PBS- SEPM Sponsorships year: June 2021 to May 2022\***

*If you or your organization would like to support the PBS-SEPM's efforts., then please contact us at*

*[info@pbs-sepm.org](mailto:info@pbs-sepm.org) or go to our website and click on the sponsorship <https://www.pbs-sepm.org/sponsorship>*

## PBS-SEPM 2021-2022 Board Members



**Daniel Scott**  
President  
[dscott@sm-energy.com](mailto:dscott@sm-energy.com)



**David Shoore**  
President-Elect  
[shoore@gmail.com](mailto:shoore@gmail.com)



**Norman E. Wells, Jr.**  
1<sup>st</sup> Vice President  
[nawgeac@gmail.com](mailto:nawgeac@gmail.com)



**Katrina Soundy**  
2<sup>nd</sup> Vice President  
[katrina.soundy@chevron.com](mailto:katrina.soundy@chevron.com)



**Ashton F. Bruyere**  
Treasurer  
[afaulkners@berryoil.com](mailto:afaulkners@berryoil.com)



**Laura M. Vargas**  
Secretary  
[lvargas716@yahoo.com](mailto:lvargas716@yahoo.com)





PBS-SEPM  
2900 Front St,  
Midland, TX, 79701

Web: [www.pbs-sepm.org](http://www.pbs-sepm.org)  
Phone: 432-279-1360  
Fax: 432-683-8739  
Email: [info@pbs-sepm.org](mailto:info@pbs-sepm.org)

If you are  
interested in a  
sponsorship  
opportunity,  
please call  
PBS-SEPM for  
more details at  
(432) 279-  
1360 or  
e-mail  
[info@pbs-sepm.org](mailto:info@pbs-sepm.org).

## Scholarships & Distinguished Lecturer Fund

### Robert Read Distinguished Lecturer Fund

- The Robert Read Distinguished Lecturer Fund was founded to honor a bright, young geologist who had been an active member of both PBS-SEPM and WTGS and was tragically killed by a drunk driver. Donations from various members of both societies contributed to a membership donation fund that both encourages our continuing education efforts by helping offset the cost of bringing in a distinguished lecturer, usually in geosciences, but not required. With these funds, we will bring our members and community a distinguished lecturer to present at a dinner event.

### Wendell J. Stewart Scholarship Fund

- The Wendell J Stewart fund is named for the famous sequence stratigrapher, was initially funded by the family, and then later through PBS-SEPM members who have contributed over the years. In the past, the scholarship was established to award high school students intending to pursue a college education in the geoscience field (declared major), and had evolved to include college students actively pursuing a geology degree when there were no other qualified candidates. Funding for this scholarship has waxed and waned over the years with the changes of the petroleum industry and because this scholarship was set up in such a manner that only the interest can be used to distribute funds, most scholarships in the last 30 years have been awarded through the PBS-SEPM main budget and not the scholarship fund. As of 2021, a resolution was passed by the executive board that allows funds to be distributed from the scholarship fund.

### Sue Tomlinson Reid Scholarship Fund

- The Sue T. Reid Scholarship was ratified June 1, 2021. This scholarship is named in honor of an excellent paleontologist who was a pioneer of women in geosciences. This scholarship will be focused on helping honor Sue's memory by supporting women at the university level who are aiming for careers in Earth Science. Funding for this scholarship will be through contributions from members and sponsors of PBS-SEPM.