

PBS-SEPM NEWSLETTER



www.pbs-sepm.org

April 2008

President's Column

Opportunity to Give Back

It was May of 1977 that I was introduced to the Petroleum Business. I had graduated from the University of Idaho with a B.S. in Geological Engineering with the idea of traveling the world doing mineral exploration. The mid-70's was not a good time for the mining industry but the petroleum industry was booming. David Hawk, the manager of I.G.C. Production Company- subsidiary of Intermountain Gas Company (natural gas utility for Idaho) gave me my break. With no experience in the petroleum industry or "soft-rock" experience, he hired me for the summer. I was pointed to his vast library on the Petroleum Industry and told to start copying and reading. He then gave me several assignments to survey the outcrops throughout the western part of the Snake River Plains and to put together information on the potential for natural gas. To my surprise I found that in the early 1920's a rig caught fire near the town of Payette, Idaho and there were several old wells that were heating some homes, but nothing commercial. I investigated the many outcrops of low-grade coal that might be providing some of the source for the gas accumulations. The company was drilling wells on the Douglas Creek Arch (Piceance Basin) near Rangely, Colorado and taking leases in the overthrust belt of Idaho.

This summer job led to the company funding my Master thesis work. I sat my first well the summer of 1978 near Driggs, Idaho looking onto the Tetons. Even though I was to be the company representative and learn all about mudlogging, drilling, and geology, I soon realized the "real" geologists at the time wanted me to be scouting out the best fishing holes for when they came to the drillsite. What I would give to be young again. This well happened to be in the middle of my thesis area and was eventually used as part of my study of the Cretaceous

stratigraphy in the area.

So what is my point? I wouldn't be here today writing this story if David Hawk had not mentored me and given me a taste of the Oil Business. I have enjoyed the ride, both the down-times and the up-times. I hope we have a few more years of these good times.

There are a number of companies hiring recent graduates and sponsoring summer interns. I would like to encourage more of you to do so. I know some sole proprietors that utilize high school students and undergraduates. It does take a little time, but the rewards are fantastic.

WTGS is sponsoring the Maps-in-School Program. PBS-SEPM is hoping to sponsor an intern field trip this summer. PBS-SEPM, with the help of a number of sponsors, is providing six students an opportunity to join us on the upcoming Spring Field Trip April 4-6. SPE, PBGS, WTGS, PBS-SEPM all give out scholarships to deserving students. For so many years no one wanted to go into the Petroleum Industry. Now, there is a real need for the next generation to hand off the baton and set forth. Are you going to stand by?

Be a hero to a young person—I would like to say thank you to all the David Hawks in our industry that share their experience and time.

David J. Entzminger

PBS-SEPM Luncheon Schedule

April 15: FutureGen's Aftermath, the Opportunities Ahead

Hoxie Smith, Director of PPDC

Updates can be found online at:
www.pbs-sepm.org

May 20: Karsting or Hydrothermal-Dolomites: What is the Reservoir Development in the Ellenburger

Dr. Robert (Bob) G. Loucks

Sr. Research Scientist, Bureau of Economic Geology, University of Texas at Austin

Please contact Paula with your reservation at (432)683-1573 or wtgs@basinlink.com

"The FutureGen Aftermath - What Lies Ahead for Permian Basin Energy Projects"

It was three years of hard work in the region's endeavor to bring the world's first near-zero emissions coal-fired power plant to the Permian Basin at Penwell, Texas. Although we weren't selected, we have realized the positive outcome of bringing our communities together to work on a common goal. It was truly a regional effort and opened the doors for communication as we work to bring significant energy projects to the Permian Basin.

The Permian Basin is the best-suited location in the country for Clean Coal Technology, because we have a CO² market and regard CO² as a commodity rather than a waste. It is common knowledge to this group that the Permian Basin needs CO² to extract more oil from our existing mature fields. And, not only is CO² injection the best way to get it out, it is currently selling at an all-time high of \$1.50 to \$2.00 per mcf. This represents a significant revenue stream for a power plant that has the ability to capture and sell the gas using IGCC (Integrated Gasification Combined Cycle) technology.

The outlook for the basin is "opportunity": wind farms, nuclear projects, solar photovoltaic research, clean coal technology, and the continued development of our oil and gas resources.

Our main challenge is attracting skilled workers as we are reaching full employment of the existing labor force. However, when these projects come with accompanying large payrolls, they will attract the workforce. We will do all that we can to continue to meet training needs through our community colleges and the University systems – both UTPB and Texas Tech University.

Our Permian Basin communities understand energy better than any geographic location in the country. Pulling together to bring regional innovative projects to the Permian Basin will continue to allow our area communities and economies to thrive.



Speaker Biography

W. Hoxie Smith, M.S., P.G. – Mr. Smith graduated from Colorado State University with a B.S. Degree in Geology (1982) and joined ARCO Exploration Company, Denver, Colorado where he conducted exploration for hydrocarbons in the complex overthrust region of western Montana. He received his Master's Degree in Geology from the University of Texas of the Permian Basin (1995) while working for Dawson Geophysical Company in Midland, Texas and serving as the Project Manager for a U.S. Department of Energy Project. From 1996 he served full-time as a Principal and Vice President of GeoSpectrum, Inc., a reservoir development company based in Midland. Mr. Smith has presented at numerous professional society meetings, including national conventions of the American Association of Petroleum Geologists, the Society of Exploration Geophysicists, and the Society of Petroleum Engineers. He has authored and co-authored over twenty-five publications in his field. Mr. Smith is currently the Director of Midland College's Petroleum Professional Development Center providing continuing education coursework and timely industry-oriented workshops for oil and gas professionals. He is the current

Chair and Continuing Education Director of the Permian Basin Section of the Society of Petroleum Engineers; Past-President, Permian Basin Geophysical Society; a member of the Midland Annual CO² Conference Committee; as well as holding a recent position as Regional Coordinator for FutureGen Texas.

Mark your Calendars

APRIL

April 3: PBS-SEPM Board Meeting

April 4-6 PBS-SEPM Annual Field Trip-
"Leonardian Slope Transition Facies of the Guadalupe Mountains"

April 8: Richard G. (Dick) Boyce - "Pinon Field Study with Implications for Texas Overthrust Natural Gas Exploration"

April 9 : PBGS Luncheon Meeting
Speaker: **Kevin Werth and Larry Linardi**
Topic: "3D Seismic Acquisition Program at DFW Airport"

April 15: Hoxie Smith, Director of PPDC –
"FutureGen's Aftermath, the Opportunities Ahead"

April 17: SIPES Luncheon Meeting

April 20-23: National AAPG Convention- San Antonio, Texas

April, 2008

April 23-26 WTGS Field Trip "Cambro-Ordovician Rocks of Central Texas: Application to the Subsurface"

MAY

May 13 WTGS Luncheon Meeting
Speaker: **Tony D'Agostino**, OMNI Laboratories Weatherford Core Evaluation Svcs., Houston, TX
Topic: **"Age, Sequences, Depo-Models, and Biofacies: U.S. Mississippian Shale-Gas Basins"**

May 19: PBS-SEPM Board Meeting

May 20: Dr. Robert (Bob) G. Loucks
Sr. Research Scientist, Bureau of Economic
Geology, University of Texas at Austin; *"Karsting
or Hydrothermal-Dolomites: What is the Reservoir
Development in the Ellenburger"*

May 22 WTGS Awards Dinner, Petroleum
Club, 6:30pm. Please call the office for reservations no
later than Tuesday, May 20.

Let us tell your story of the
Permian Basin History

We are featuring a new item in the newsletter which
includes a story from our "well-seasoned"
geoscientists. These may be their favorite plays, that
once-in-a-lifetime project or well, or stories about
their fellow workers (the pictures could be very
interesting). If you would like to write a story or
know of someone that would like to contribute,
please contact David Entzminger, 686-6741.

Are you a PBS-SEPM member?
Applications on the website: www.pbs-sepm.org

***PBS-SEPM- upcoming
elections***

In the next few weeks you should be receiving a
ballot for the 2008-09 slate of officers. I would
encourage you to get involved by voting. The
society only gets stronger with your participation.

If you would be interested in a position on a
committee or the board, please contact any of the
current board members found on page 9 of this
newsletter.

**PERMIAN BASIN SECTION –
SEPM
OFFICER CANDIDATES
2008/2009**

PRESIDENT ELECT

Fred H. Behnken Kinder Morgan
Production Company, L.P.

Biographic Information

Staff Geologist
Kinder Morgan Production Company, L.P.
Previously consulting as FHB Stratigraphic
Services, ARCO Permian, ARCO Exploration
Co., Mesa Petroleum, Union Oil of California,
Asst Prof. (Geol) at Augustana College, IL and
Texas Tech University, Lubbock.
Augustana College - BA Geol 1967
University of Wisconsin, Madison -MS Geol
1969 and Ph.D. Geol 1972
PBS-SEPM 1970-
PBS-SEPM Treasurer, 2nd VP, 1st VP,
President-Elect, and President.
National SEPM Member 1969-
Gulf Coast Section SEPM
WTGS Member 1970-
AAPG Member 2006-
Roswell Geological Society 1985-
SPE Member
Paleontology Society 1968-2007
Texas Licensed Professional Geologist

1ST VICE PRESIDENT

Hollie Lamb Stanolind Oil and Gas Corp.
432-688-4250
hlamb@stanolind.com

Biographic Information

Geo Engineer – Stanolind Oil and Gas Corp.
Lakehead University – BS – Engineering (Civil)
Northern College – Survey Technician & Architectural
Technician
WTGS Member – 2005 –
WTGS Luncheon Coordinator July 2007 -
SEPM Member – 2005 –
SEPM Field Trip Committee 2007
SPE Member – 2005 –

2nd VICE PRESIDENT

Terri McGuigan Independent

Biographic Information

Previously Land Manager – Endeavor Energy Resources, LP
University of Texas of the Permian Basin – BS Geol 2005
and currently obtaining MS Geol
SEPM Member - 2004
PBS-SEPM Member – 2003 -
PBS-SEPM Treasurer – 2007-2008
AAPG Member - 2002
WTGS Member – 2003 -
WTGS Fall Symposium Co-Chair Moderators and Judges –
2006, 2007
WTGS Delegate to SWS – AAPG – 2007-2010
AAPL Member 1998
Certified Professional Landman - 1999
PBLA Member 2006

TREASURER

Debrah S. Gann ARCADIS US, Inc.

Biographic Information

Project Scientist / Geologist
ARCADIS U.S. Inc.
University of Texas of the Permian Basin - BS
Geol 1992 and MS Geol 2000
PBS-SEPM Member 1996-
PBS-SEPM 2nd Vice President 2007-2008
WTGS Member 1996-
WTGS Continuing Ed. Chairman 2006-2008
AAPG & AAPG-DEG Member 2000-
AAPG-DEG Health & Safety Committee 2006-2007
SWS-AAPG: DEG Advisory Board Member
2003-2004
SWS-AAPG 2004 State Conference – Environ-
mental Session Technical Committee &
Moderator
Business & Professional Women Member 2004-
BPW Corresponding Secretary 2006-2008
BPW Communications Chair 2004-2008
NGWA Member 1996-
SPE-ESG Member 1996-
Texas Licensed Professional Geoscientist
Tennessee Registered Professional Geoscientist

Louis J. Mazzullo, CPG Mazzullo Energy Corp.

Biographic Information

President
Mazzullo Energy Corp., Midland
Previously Senior Exploration Geologist, Brigham Oil & Gas;
Mediterranean Resources (both Austin); Petroleum Geological
Consultant

for 24 years; previously Uranium Exploration & Development
geologist,
Phillips Petroleum Co. and Energy Resources Corp.
Brooklyn College, CUNY - BA Geol 1973
State University NY, Stony Brook- MS Earth & Space
Sciences, 1975
University of Chicago- MS Geophysical Sciences, 1976
PBS-SEPM 1988-89, President
Various committees and field trip planning
WTGS Member 1981- present
Various committees
Dedicated Service Award, 1992-93
AAPG Member 1977- present
Wyoming Registered Geologist
AAPG Certified Petroleum Geologist
Levorsen Award Recipient, 1990 & 1999, Southwest Section
AAPG
Cheney Science Award, 2005- Southwest Section AAPG

SECRETARY

James L. Hawkins Schlumberger.

Biographic Information

Borehole Geologist/Horizontal Well Placement Engineer
Schlumberger – Data Consulting Services
University of Texas of the Permian Basin – BS 1993
University of Texas of the Permian Basin – MS 2005
18 Years Oil & Gas Experience in Permian Basin
AAPG Member 1991-
DEG & EMD
PBS-SEPM Member 1993-
SEPM National Member 2007-
WTGS Member 1993-
APGE Member 1997-
GSA Member 2007-

Jesse Garnett White Kinder Morgan
Jesse_white@kindermorgan.com

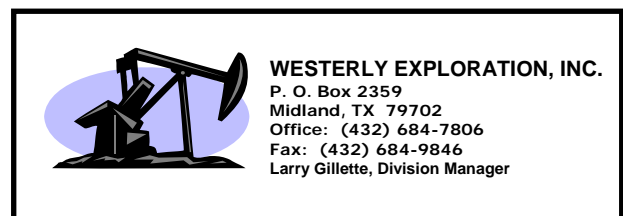
Biographic Information

Staff Geologist, Yates Team
Kinder Morgan Production Company LLC
University of Alaska Fairbanks - MS Geol 2007
University of Idaho - BS Geol 2003
GSA Member - 1999
AAPG Member - 2000
SEPM Member - 2003
ALASKA MINERS ASSOCIATION - 2003
ALASKA GEOLOGICAL SOCIETY - 2003
IAS Member - 2006
WTGS Member - 2007
PBS-SEPM Member – 2007

**NOTE: President-Elect, 1st Vice President, &
2nd Vice President Candidates are unopposed.**

2007-08 Corporate Sponsorships

If you are interested in a sponsorship opportunity, please call Paula Mitchell for more details at (432) 683-1573



Former Rotary Laboratory, Inc.

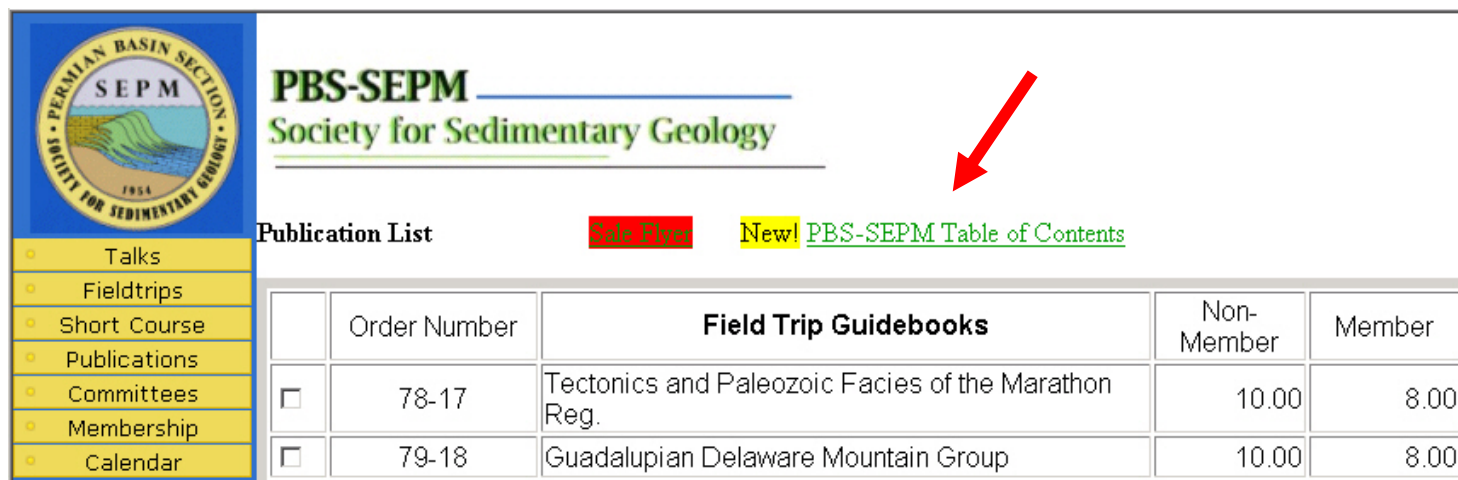


HALLIBURTON

We would like to THANK our Corporate Sponsors for their support

PBS-SEPM DIGITAL PUBLICATION PROJECT

Check this out-----www.pbs-sepm.org/publications. You can now go to the PBS-SEPM website and search all their publications' tables of contents for topics, articles, authors. Just click on the PBS-SEPM Table of Contents- an Adobe PDF will be launched. You can use the Bookmarks on the left side or use the search function. Yes, you might find that little bit of information that will make your next exploration or development project a success. Limited time offer--- it will be part of the new digital publication package coming out in April.



PBS-SEPM
Society for Sedimentary Geology

Publication List [Sale Flyer](#) [New! PBS-SEPM Table of Contents](#)

	Order Number	Field Trip Guidebooks	Non-Member	Member
<input type="checkbox"/>	78-17	Tectonics and Paleozoic Facies of the Marathon Reg.	10.00	8.00
<input type="checkbox"/>	79-18	Guadalupian Delaware Mountain Group	10.00	8.00

The compilation of all the Tables of Contents is a quick reference to all PBS-SEPM publications. Since this file has been OCR, one can use **word searches** to find a publication, article, subject or author. On the **Toolbar**, you will find a binocular “search”, click on it and you will get the search menu (Figure 1, p. 7). By simply typing in the information you would like to find, and clicking the **search key**, you will be shown to all the places that have that word or words (Figure 2, p. 7).

All publications have been **Bookmarked** and put into three categories: Publications, Special Publications or Core Workshops (Figure 3, p. 7). By simply clicking on any of these categories, they will expand to the publication list. “Click” on the desired publication and you will be taken directly to that page. All publications have a “Table of Contents” associated with them and by going to the next page(s), you will be able to view all the articles in that publication. You can also get to any of the “Tables of Contents” from the bookmarks by expanding any of the individual publications and “clicking” on the Table of Contents below the publication of choice.

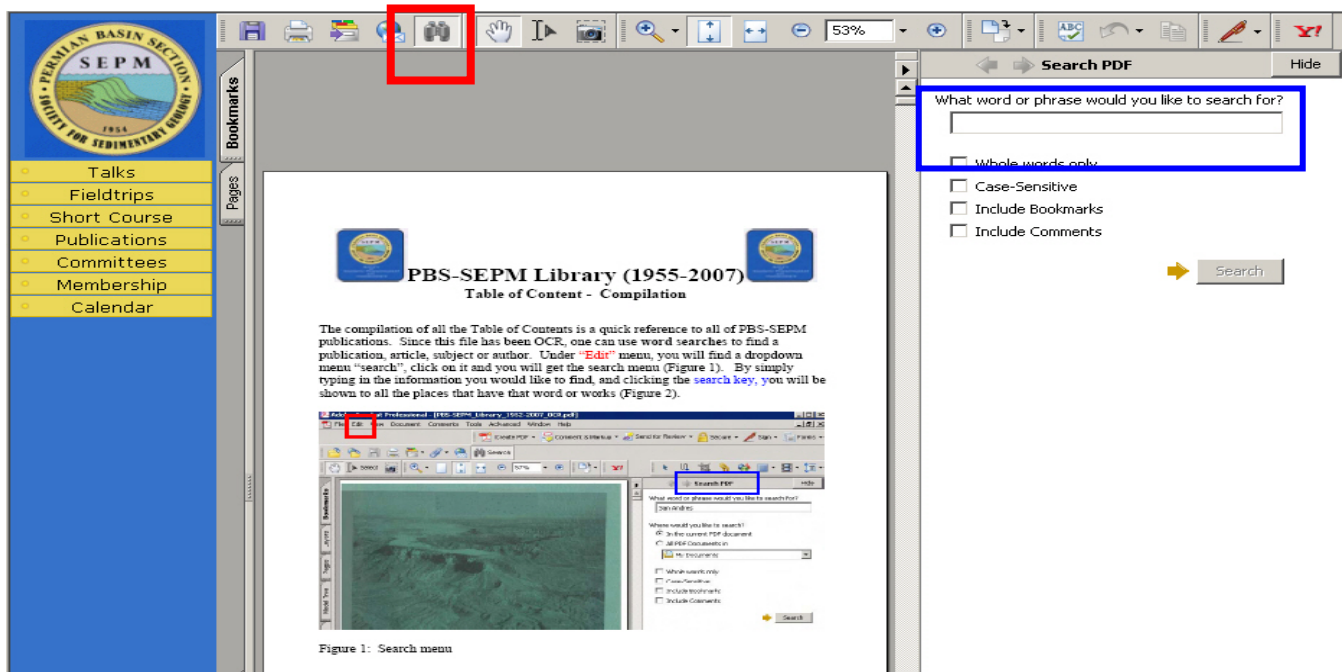


Figure 1: Search menu

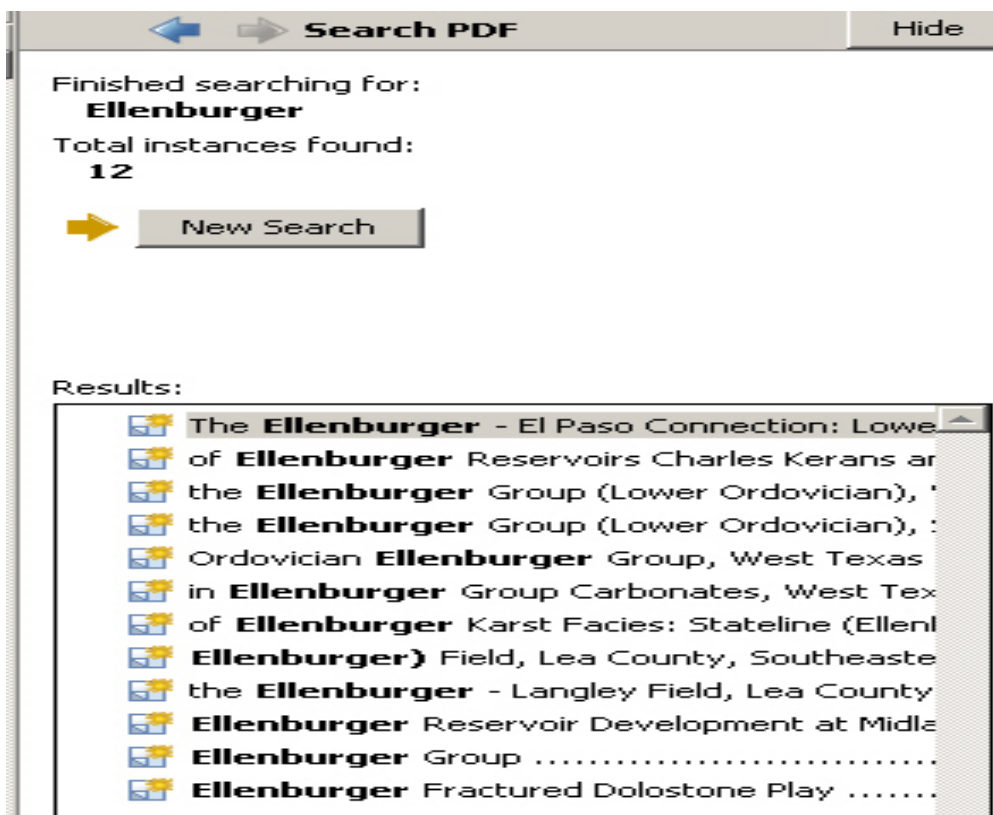


Figure 2: Search retrieval

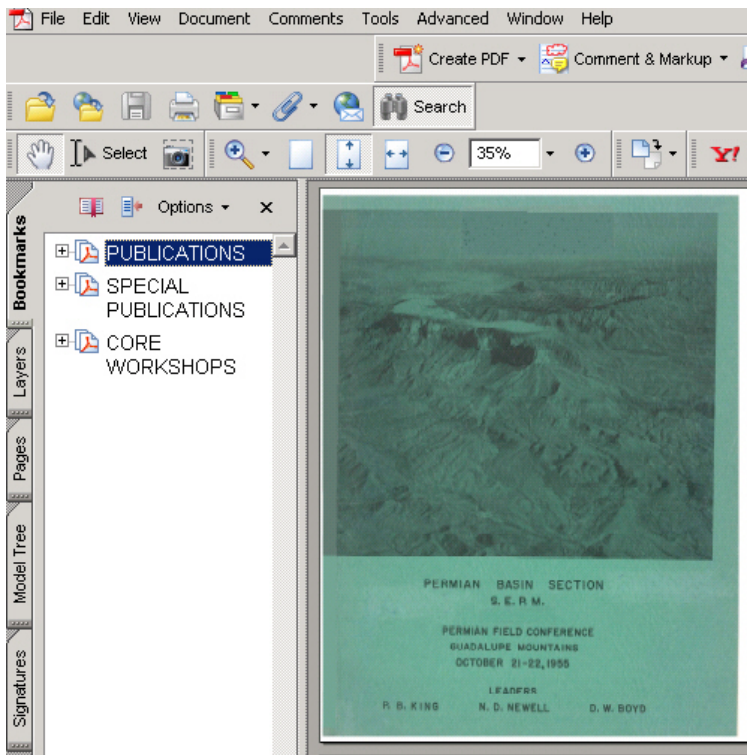


Figure 3: Bookmarks

BOARD MEMBERS

President:	David J. Entzminger	Whiting Petroleum	(432) 686-6700	entzminger@whiting.com
President Elect:	Cory L. Hoffman	St. Mary Land & Explor. Co.	(432) 688-1782	CHoffman@StMaryLand.com
1 st Vice President:	Michael A. Senich	Independent	(432) 688-3047	msenich@claytonwilliams.com
2 nd Vice President:	Deb S. Gann	Arcadis G & M Inc.	(432) 687-5400	dgann@arcadis-us.com
Secretary:	Rachel E. Aisner	CrownQuest Operating LLC	(432) 685-3116	raisner@crownquest.com
Treasurer:	Teri McGuigan	Independent	(432) 684-9333	tmcguigan1@suddenlink.net
Executive Dir.	Paula Mitchell	PBS-SEPM	(432) 683-1573	wtgs@basinlink.com

PBS-SEPM COMMITTEES

Lunch Arrangements	Cindy Bowden	Kinder Morgan CO ₂ Co	(432) 688-3785	cindy_bowden@kindermorgan.com
Newsletter	<i>Please Volunteer</i>			
Luncheon Program	Steve Trudeau	Independent	(214) 683-4044	SteveTrudeau@GMail.com
Calendar	Gilbert Barragan	Whiting Petroleum Inc.	(432) 686-6750	Gilbert.Barragan@whiting.com
Honorary Life	Emily Stoudt	UTPB	(432) 552-2244	stoudt_e@utpb.edu
Nominating	David Farmer	Stanolind Oil & Gas Corp.	(432) 688-4250	dfarmer@stanolind.com
One Day Field Trip	Gilbert Barragan	Whiting Petroleum Inc.	(432) 686-6754	Gilbert.Barragan@whiting.com
Publications	Richard Blackwell	Consultant	(432) 683-4971	rcbgeol@nts-online.net
Publicity	Rick Doehne	University Lands	(432) 684-4404	rdoehne@utsystem.edu
Scholarship	David Farmer	Stanolind Oil & Gas Corp.	(432) 688-4250	dfarmer@stanolind.com
Stratigraphic	Bob Trentham	Director- CEED	(432) 552-2432	trentham_r@utpb.edu
Webmaster	Wendy Savage	Whiting Petroleum Inc.	(432) 686-6750	wendy.savage@whiting.com



PBS-SEPM Publications

Pre-Delivery Sale- until April 15th

This is your opportunity to have the entire PBS-SEPM publication library (1955 – 2007) at your fingertips. There will be an index fully searchable—find a topic or author just by typing in the word(s). All publications are in Adobe PDF. They are bookmarked, and figures are highlighted in the text for quick reference. Those areas that are off limits to geologists like the Glass Mountains or Sierra Diablos have been written up in these publications.

This includes all publications, even the special publications and coveted core workshops. **Many items not in original publications.** Can you imagine the hidden treasures you have missed? Here is your chance to uncover them.

Library (47 publications) **\$100.00** plus 8.25% tax and \$5.00 shipping and handling

Core Workshop Collection (82, 83, 85, 98) & Special Publications (A, 88-28, 96-39, 84, Bob Ward's Permian Review) **\$100.00** plus 8.25% tax and \$5.00 shipping and handling

Members- Sale Price \$150.00 plus 8.25% tax and \$5.00 shipping and handling

NonMembers- Sale Price \$200.00 plus 8.25% tax and \$5.00 shipping and handling

Delivery date is planned for April 15th

Name: _____ **Company/Affiliation:** _____

Mailing Address: _____

Business Phone: _____ **Fax:** _____ **Email:** _____

Payment: check, cash or credit card

() I authorize you to charge the above to my:

() MasterCard () VISA () American Express Exp. Date: _____

Card number: _____ **Signature:** _____

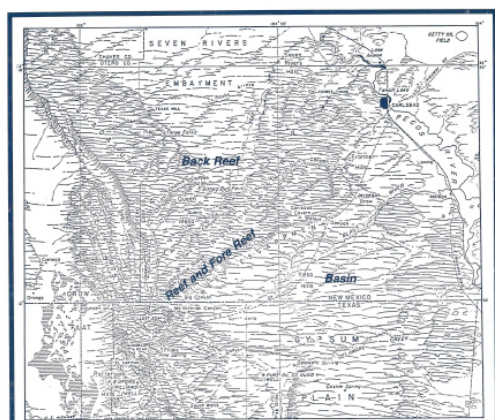
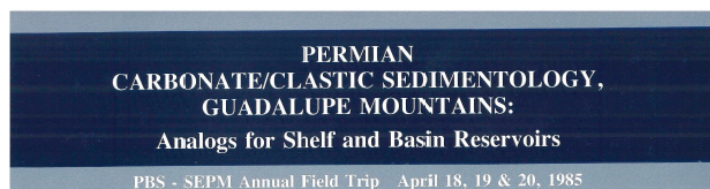
Make checks payable to **PBS-SEPM**.

Please send registration and payment information: PBS-SEPM, P.O. Box 1595, Midland, Texas 79702

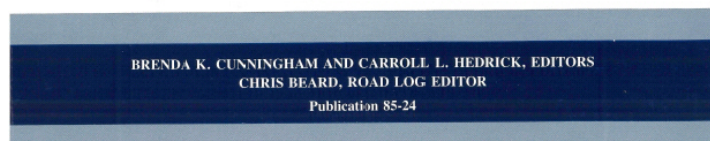
For additional information **contact:** PBS-SEPM office (432) 683-1573

PERMIAN CARBONATE/CLASTIC SEDIMENTOLOGY, GUADALUPE MOUNTAINS; *Analogs for Shelf and Basin Reservoirs*

April - Special Featured Book - \$5



After King, 1948.



Publication 85-24

TABLE OF CONTENTS

Message & Preface	...iii
Acknowledgements	...iv
Tribute and Dedication J.W.Adams	...vi

SECTION ONE - ROAD LOG

Day One - Back-Reef Facies	...4
Day Two - Back-Reef and Reef Facies	...21
Day Three - Reef, Fore-Reef, and Basin Facies	...51

SECTION TWO - ABSTRACTS

Inferred Tectonic Control of Permian Hemi-cyclic sandstone-Carbonate Sedimentation. Northwestern Shelf. Delaware Basin. New Mexico	
M.P. Candelaria	...67
Sea Level and the Capitan Reef Complex. Southwest USA, A Famous Model "In Flux"	
L.C. Pray	...68
Tepees: An Environmental Cue in Ancient Carbonates	
J.K. Warren	...69
Eolian Origin of Quartzose Sheet Sands in Permian Shelf Facies. Guadalupe Mountains	
S.J. Mazzullo, J. Mazzullo, and P.M. Harris	...71

SECTION THREE - REPRINTS

Queen Formation (Guadalupean. Permian) Outcrops of Eddy County. New Mexico and Their Bearing on Recently Proposed Depositional Models	
S.M. Ball, J.W. Roberts, J.A. Norton and W.D. Pollard	...75
Guadalupean Depositional Cycles of the Delaware Basin and Northwest Shelf	
A.D. Jacka, C.M. Thomas, R.H. Beck, K.W. Williams, and S.C. Harrison	...81
Cyclic Sedimentation in Middle Permian Strata of the Permian Basin, West Texas and New Mexico	
F.F. Meissner	...118

SECTION FOUR - GENERAL INTEREST

The Guadalupe Mountains of Texas	
A. Tennant	...143
Geology of the Carlsbad Caverns	
N.R. Bullington	...145
Historic Guadalupe Pass	
J.W.Adams	...148
1985 Spring Field Trip Photographs	...152

Order Publications:

<http://www.pbs-sepm.org/> or call the office
(432) 683-1573