

Chisos Mountain Range, April 2021, taken by Hector Martinez

PBS-SEPM NEWSLETTER

September 2021

President's Letter— 2
Continuing
Transitions

Call for 3
Volunteers
Board updates

Visit us at WTGS at 4
Bush Convention
Center— Booth 38

PBS-SEPM 5
Luncheon location
change

PBS-SEPM 6
September
Luncheon & Annual
Meeting, Speaker:
Lowell Waite, Title:
“Stratigraphic Frame-
work of the Wolfcamp
– Spraberry, Midland”
Basin

7
Membership
Reminder—
Please Renew for
2021-2022

Digital & Hard 8
Copy Library
~Publication Highlight~

PBS-SEPM 9
Publication: V.5
Carbonate Well Log &
Core Data Analysis
Spreadsheet

Corporate & 10
Individual
Sponsors
We appreciate your
generosity

PBS-SEPM | 1
Sponsorship Tiers
& PBS-SEPM
Executive Board
2021-2022

About PBS-SEPM | 2
Wendell J. Stewart
Scholarship Fund &
Robert Read Fund



KEY DATES For September 2021

SEPTEMBER 2021

- **14: WTGS Luncheon**, Bush Convention Center/Virtual, 11:30
- **21: PBS-SEPM Luncheon**, Planetarium at the Museum of the Southwest & Virtual, 11:30am-1pm
- **21-23– WTGS Fall Symposium**. Unmasking new plays in the Permian Basin. Bush Convention Center- *Visit us at booth 38*

President's Column

Observations of Nape

Nape Summit is in the summer this year because the pandemic shut down the February convention. The Summit convention happens mid-February in Houston during ski season. Houston in February is more appealing than Houston in August for the mature desk jockey executive accustomed to a cranked down air conditioner looking oddly like Mr. Rogers. Good hands are hard to find these days even amongst some industry leaders that say Houston is too hot in August and complain if they must step outside for any reason. Yet, they would be perfectly fine if Nape was held in Cozumel, or in the South Pacific.

The purpose of Nape is to connect deals, decision makers, and investors. This is one place where deals can be made amongst the oil industry networks. It is always fun to walk up and down the aisles and see what people are buying and selling. Some people go for the loot vying for the perfect sticky pad. Heaven knows those squeeze balls can keep the self-important executives stress level to a minimum.

The deals at Nape range from the great deals that gets bid through the roof or to the acreage someone got stuck with that can't be traded for a can of tuna. It's a place to watch fawning adulation between two parties come to terms on a deal as they boast after a toast at how low their golf handicap is and about how they have played the best courses in the world that nobody cares about. They purposely omit their story about that "one time at band-camp" because it might blow their chance of closing the deal. Those stories usually slip out at an investors open-bar reception.

Nape is a treasure trove of good "small" deals. Investors might want to reconsider their portfolio which is bragged about more than their golf handicap. There is a good opportunity for a moneyman to go in and put a bunch of small deals together to create a nice profitable portfolio. Is an old idea recirculating? Is it possible to put a bunch of small deals together with geologists and engineers? There is a whole niche of oil finders that are currently leaving the oil industry. Individual oil finders with experience are valuable, especially those who can put a small team together. They will be the next hot item. This puts Geologists, PE's and RE's in the catbird seat for the next upswing of the industry.

The money is still out there to invest. It is a good time for investors to get back to the basics of investing in the smaller team. This will build larger teams and portfolios. Investing in the lone geologist to build a team with an engineer is not a thing of the past. Small teams are resourceful and know how to get the job done. All that is needed, is for the investor to give the little guy an opportunity.

The money guys always say they have control of the deal because "he who has the money rules". Instead of treating it as a dictatorship, make it a win-win for everyone. Pay people well and reap the rewards.

This may sound a bit utopian, but everyone in business should bring the little guy up to a higher level and treat your fellow man with respect. Most importantly, as we go about looking to make and create opportunities, be honest in your business dealings. It's that simple.

David Shoore
8/10/2021





Volunteer with PBS-SEPM!



If you are interested in volunteering with PBS-SEPM,
below are the Board Positions and Committees

Board Positions

President-Elect
1st Vice President
2nd Vice President
Treasurer
Secretary

Committees

Nominating
Honorary Life
Stratigraphic
Scholarship
Core Location
Dedicated Service Award
Distinguished Lecturer Series

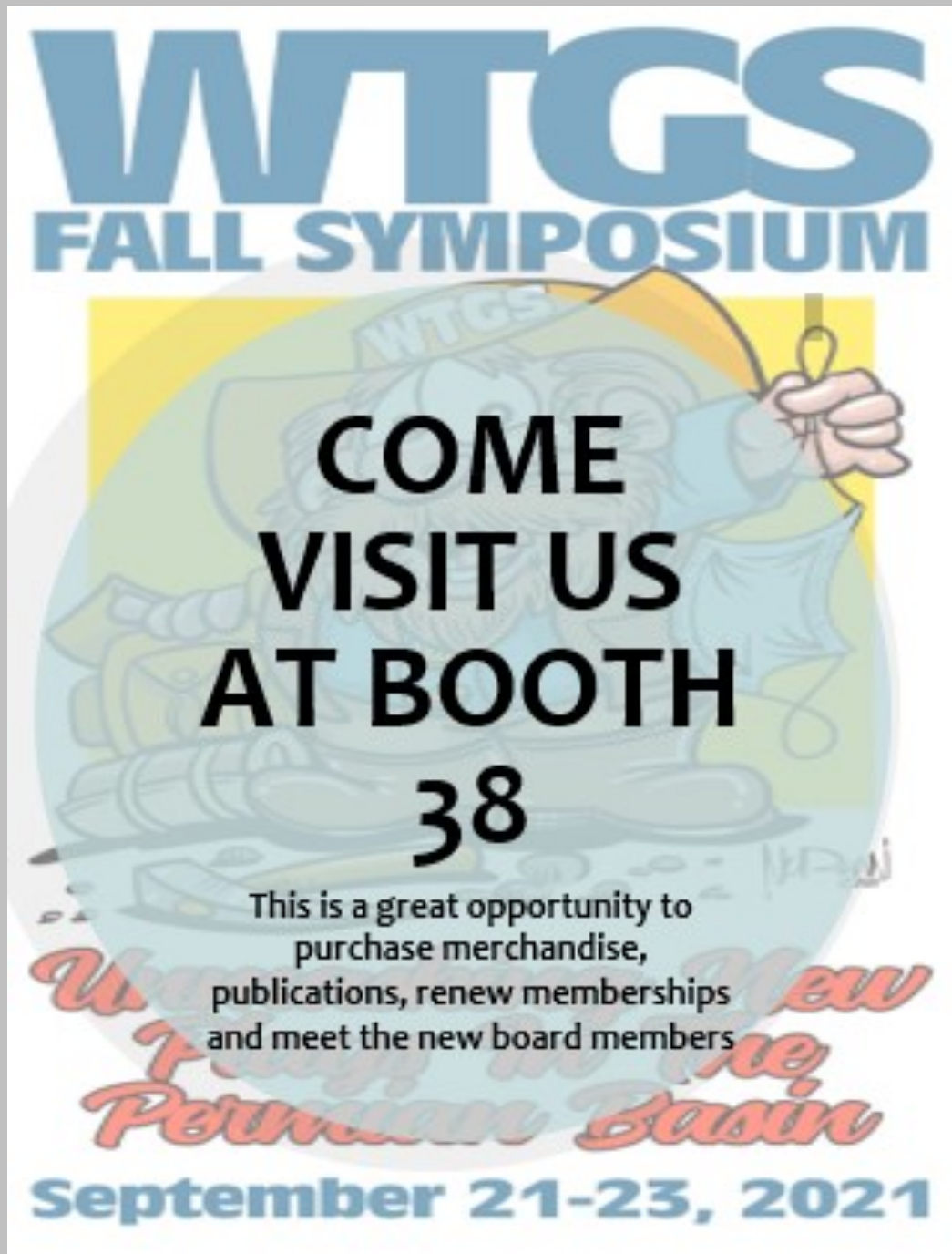
Webmaster
Publicity
One Day Field Trip Young
Professionals Field Trip
Lunch Arrangements
Luncheon Program
Speaker Award
Publications

Please email us at info@pbs-sepm.org to get more details about the position
or committee.

Board Position Update

Many of you may not know, but our 2nd Vice President Jesse White had decided to resign his position effective 08/29/2021 due to personal conflicts. However, it is with great pleasure to announce our new 2nd Vice President is Katrina Soundy! Katrina graciously volunteered to take up the mantle after helping with the luncheons in Jesse's absence. The board unanimously voted her in at our last Board Meeting on September 2nd. We all wish her the best year possible and will be assisting her with the 2nd VP duties during this transition period. **If you would like to be on one of Katrina's Committees (*Luncheon Arrangements, Luncheon Program, Membership, Sponsorship*) please email your PBS-SEPM Board at info@pbs-sepm.org.**

Come visit our booth at this years WTGS Symposium

The graphic is a promotional poster for the WTGS Fall Symposium. At the top, the text "WTGS FALL SYMPOSIUM" is written in a large, bold, blue sans-serif font. Below this, the central text "COME VISIT US AT BOOTH 38" is displayed in a large, bold, black sans-serif font. The background of the central text area features a faint, circular illustration of a hand holding a fishing net, with a fish inside. Below the central text, a paragraph in a smaller black font reads: "This is a great opportunity to purchase merchandise, publications, renew memberships and meet the new board members". At the bottom of the graphic, the text "Western Trough New Peruvian Basin" is written in a stylized, red, cursive font, and "September 21-23, 2021" is written in a bold, blue, sans-serif font.

**WTGS
FALL SYMPOSIUM**

**COME
VISIT US
AT BOOTH
38**

This is a great opportunity to
purchase merchandise,
publications, renew memberships
and meet the new board members

*Western Trough New
Peruvian Basin*

September 21-23, 2021

PBS-SEPM Luncheon ** LOCATION CHANGE**

Planetarium at the Museum of the Southwest

1705 W. Missouri Ave., Midland, TX 79701



PBS-SEPM Luncheon Talk – September 21, 2021

Lowell Waite

**Dept. of Geosciences & Permian Basin Research Lab at the University of New Mexico
University of Texas at Dallas**

“Stratigraphic Framework of the Wolfcamp - Spraberry, Midland Basin”

Tuesday, September , 2021 - [Museum of the Southwest Blakemore Planetarium & Virtual](#),
11:30 a.m.

~Will be available virtually through [GoToMeeting](#).~

Abstract

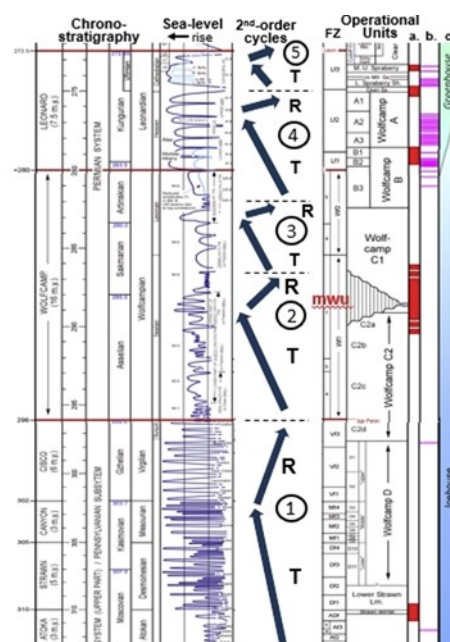
The Midland Basin of west Texas contains numerous large conventional oil and gas fields, including the giant Kelly -Snyder field (Penn. reef, Horseshoe Atoll) and Spraberry Trend (early Permian deep-water clastics). Recently, the Wolfcamp shale and Spraberry Formation have emerged as two of the nation's leading unconventional plays. Bounded by the Lower Strawn Limestone below and by middle Permian units above, this thick (~4,000 ft.) package of strata record the history of basin-fill during Late Pennsylvanian - early Permian time. To facilitate the development of these massive unconventional resources, the Wolfcamp – Spraberry interval is now informally subdivided into a number of lithostratigraphic-based operational units and sub-units. Major units include, from oldest to youngest, the Wolfcamp D, Wolfcamp C, Wolfcamp B, Wolfcamp A, Dean, Lower Leonard Shale, Jo Mill, and the Lower, Middle, and Upper Spraberry.

The Wolfcamp D consists of a series of semi-starved, basinal cyclothems deposited during the Late Pennsylvanian icehouse. The Wolfcamp C is a predominantly clay-rich shale representing the distal portions of large delta systems that rapid prograded across the Eastern Shelf. During the upper portion of Wolfcamp C time, the Glasscock Nose was constructed by a series of mounded/progradational deep water carbonate flows (carbonate drift deltas?). Concurrently, regional structural movements within the Central Basin Uplift resulted in formation of the mid-Wolfcamp unconformity along the western flank of the Midland Basin. The Wolfcamp B and Wolfcamp A constitute a thick series of organic-rich, silt- and calcareous-rich mud rocks currently residing in the peak oil generative window. Deposition of the Wolfcamp shale was terminated by the first major incursion of deep-water clastics, represented by the Dean sandstone. This was followed by deposition of the Lower Leonard shale, Jo Mill, Lower Spraberry, Middle Spraberry, and Upper Spraberry, a series of silty mudstones and clay-rich siltstones punctuated by numerous deep-water submarine fan complexes containing massive to laminated, fine-grained sandstones. The Dean through Upper Spraberry units are stratigraphically-equivalent to the Bone Spring of the Delaware Basin.

Each Wolfcamp – Spraberry operational unit is geologically unique, the product of a dynamic set of tectonic, climatic, sedimentologic, oceanographic, and biological factors that characterize the Late Pennsylvanian – early Permian setting of western Pangea. Analysis of regional sea-level curves tie specific operational units to particular periods of long-term lowstands and highstands encapsulating the Late Pennsylvanian icehouse and transition to an early Permian greenhouse. Understanding of the regional geologic setting and sea-level history of these rocks helps unravel the complex lithologies and stratigraphy observed on seismic, logs, and in cores. Recognition of the geologic uniqueness of each operational unit also assists geologists and engineers during the drilling, targeting, completion, and development phases of these important unconventional resources.

Biography

Lowell Waite received his B.S. in Geology from the University of Michigan and an M.S. in Geology from the University of Texas at Arlington. He was employed by Mobil Oil Corp., and Pioneer Natural Resources, researching carbonates for domestic and international E&P, in classic petroleum regions, including North Africa, Saudi Arabia, Kazakhstan, Venezuela, Mexico, U.S. Gulf of Mexico, and the Permian Basin. His teaching focus at UT Dallas is on petroleum systems and basins, to better prepare students for employment in the oil and gas industry.



Renew Your PBS-SEPM Membership!

Purchase your 2021-2022 Annual Dues Now

- *Help provide Geoscience Scholarships*
- *Annual YP Field Trip led by discipline leaders*
- *Professional Field Trips led by topical experts*
- *Monthly Technical Luncheon series*
- *Annual Core Workshops*
- *Networking Opportunities*
- *Special member pricing on merchandise*
- *Member discounts on Events*

Please visit our website, www.pbs-sepm.org, to find our membership form, or reach out via email to info@pbs-sepm.org to speak to a board member. Pay by check made out to PBS-SEPM and send to our physical address – 2900 West Front St, Midland, Texas 70701 – call (432) 279-1360 to make a credit card payment – or pay online via the website.



PBS-SEPM Publications



PBS-SEPM PUBLICATION HIGHLIGHT

“Paleokarst, Karst-Related Diagenesis, Reservoir Development, & Exploration Concepts: Examples from the Paleozoic Section of the Southern Mid-Continent”

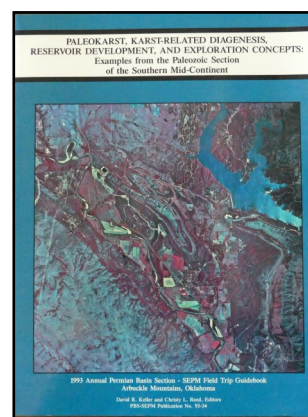
93-34

\$13.13 Members \$17.50 Non-Members



Section I: Field Trip Road Logs - Days 1 and 2

Section II: Technical Papers covering the Arbuckle Group, the Knox Cyclic Carbonates, and the Woodford Shale in the South-western United States. Authors include: James Wilson, Robert Lindsay, Kathy Koskelin, Isabel Montanez, Ann Stefani, Suzan Siy, James Stitt, and James Loch.



Entire PBS-SEPM publication library (1955 – 2007)

There is a fully searchable Table of Contents—find a topic or author just by typing in the word(s). All publications are in Adobe PDF with all major articles being bookmarked, and all the figures are linked in the text for quick reference. Those areas that are off limits to geologists like the Glass Mountains or Sierra Diablos have been written up in these publications. Numerous out-of-print publications and figures and/or plates not published in the original guidebooks are now available in this library.

DVD I - Symposiums & Guidebooks (1955-1989)

Member- \$125.00 plus 8.25% tax and \$5.00 shipping and handling
Non-Member- \$150.00 plus 8.25% tax and \$5.00 shipping and handling

DVD II - Symposiums & Guidebooks (1990-2007)

Member- \$125.00 plus 8.25% tax and \$5.00 shipping and handling
Non-Member- \$150.00 plus 8.25% tax and \$5.00 shipping and handling

DVD III - Core Workshops (82, 83, 85, 98) & Special Publications (A, 88-28, 96-39, 84)

Member- \$125.00 plus 8.25% tax and \$5.00 shipping and handling
Non-Member- \$150.00 plus 8.25% tax and \$5.00 shipping and handling

Entire Set of three DVDs

Member Price \$275.00 plus 8.25% tax and \$5.00 shipping and handling
Non-Member Price \$300.00 plus 8.25% tax and \$5.00 shipping and handling

Payment: check, cash or online with credit card

**Make checks payable to PBS-SEPM & send order form to: PBS-SEPM, 2900 Front St, Midland, TX, 79701
To purchase online, click [HERE](#) and pay with credit card**

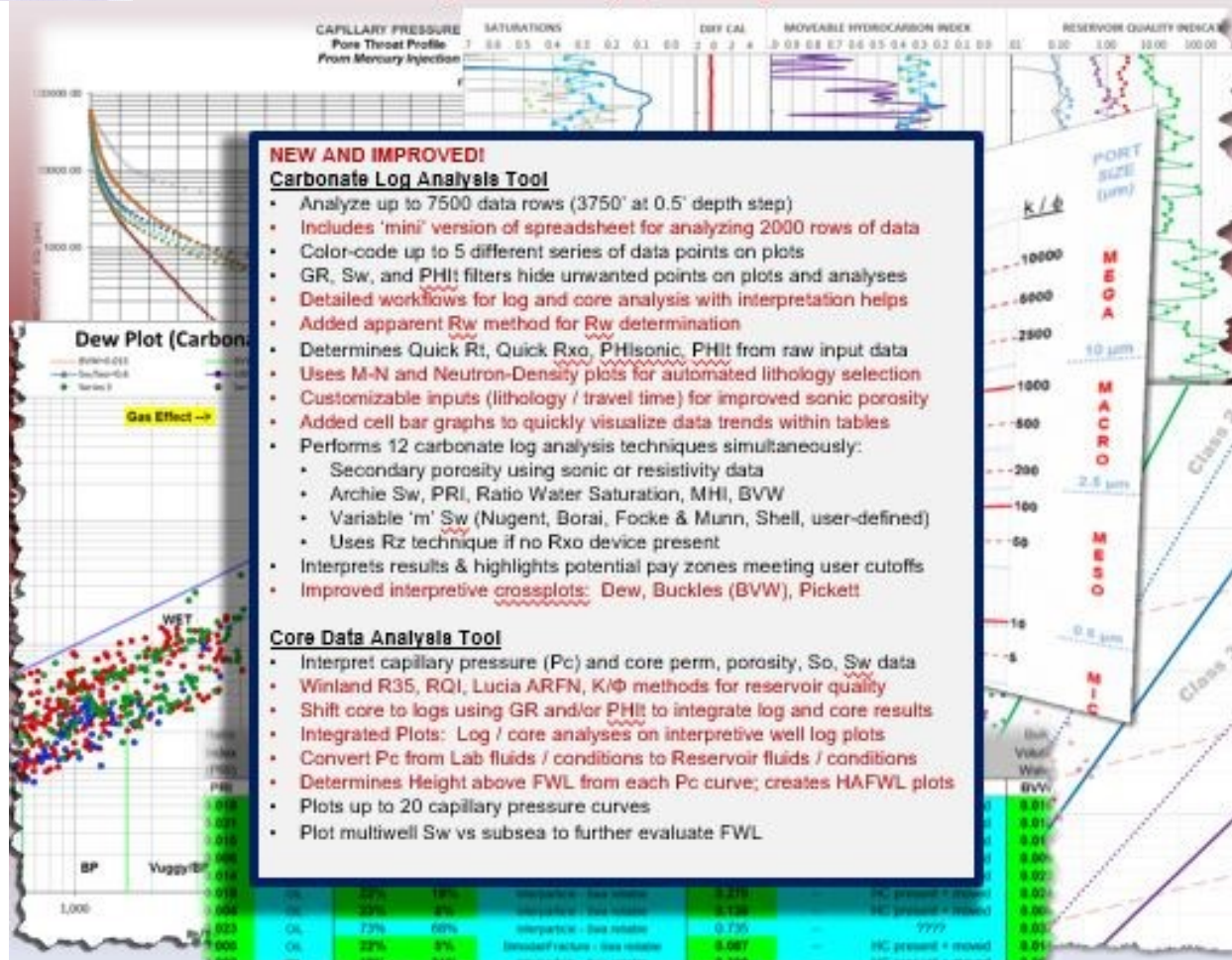
For additional information contact: PBS-SEPM office (432) 279-1360 or info@pbs-sepm.org.



Carbonate Log & Core Analysis Spreadsheet v. 5.0 By Cory L. Hoffman, Ph.D.

Major Upgrade (January 2020)! [Designed for Microsoft Excel 2013]

Carbonate Log analysis draws heavily upon teachings of George Asquith
Core Data analysis draws heavily upon teachings of Dan Hartmann



We would like to thank, [Fox Pest Control](#), a local Midland-Odessa Company, who have decided to sponsor with PBS-SEPM. They like to sponsor local organizations that are making a difference in their service area.

FOX
PEST CONTROL

Corporate Sponsorships (2021-2022) - PBS-SEPM is grateful for the generosity of these fine corporate sponsors !

Platinum Sponsor



Your
Company
Logo
could be in
our
newsletter
showing
your
support of
PBS-
SEPM.

Your
support
lifts your
corporate
name
within the
Permian
Basin.

Individual Sponsors of PBS-SEPM (2021-2022)

***Your Business Card
Could be here!***

Individual sponsors are advertised on the PBS-SEPM website and each newsletter. Cost is \$50/year. If you are interested in a sponsorship opportunity, please call PBS-SEPM for more details at (432) 279-1360 or email info@pbs-sepm.org.

Your card will be in every newsletter and on the PBS-SEPM Website for one year from August to May.

 <p>MARS EXPLORATION AND ENERGY, LLC</p>	
<p>Michael A. Raines, President CPG #6308, TxBPG #1506</p>	
<p>Contract Reservoir Geology Services</p> <ul style="list-style-type: none"> • Waterflood Studies • Enhanced Oil Recovery • Carbon Sequestration • Conventional Reservoirs • General Permian Basin 	<p>Mike@MarsExp.com (432) 934-7202</p> <p>1300 South County Rd 1117 Midland, Texas 79706</p>

 <p>CONTINENTAL LABORATORIES</p>	<p>Jimmy Bagley Business Development Manager</p>
<p>6600 Fairbanks N Houston Rd Houston, TX 77040 www.continentallabs.com</p>	<p>jbagley@continentallabs.com operations 800.856.0237 c 832.564.6028</p>



Sponsorship Information (2021-2022)

Our non-profit society relies entirely upon the efforts of dedicated volunteers to serve the geological community—primarily through educational events. The PBS-SEPM hosts luncheon lectures, core workshops and field trips that are led by experts in their chosen areas of the geosciences. If you would like to sponsor the PBS-SEPM in anyway, we have various levels of commitment you can choose from.

Platinum: \$1500+: Company Logo for 2 years on YPFT field trip, core workshops, luncheon slides, newsletters, website, or new publications (from date of donation)

Gold: \$1000: Company logo for 1 year on the YPFT field trip (which includes guidebooks and other paraphernalia-stickers, pens/pencils, rite in the rain books), luncheon slides, newsletter, and website

Silver: \$700: Logo on the core workshop / one day field trip (which includes guidebooks), luncheon slides, newsletter, and website

Bronze: \$400: Will get their logo on all PBS-SEPM luncheons, newsletters, and the website.

Aluminum: \$250: Will get logo on all luncheons slides, and table tent for one luncheon date.

If you are interested in a sponsorship opportunity, please call PBS-SEPM for more details at (432) 279-1360 or e-mail info@pbs-sepm.org.

PBS-SEPM Executive Board (2021-2022)

President:	Daniel Scott	dscott@sm-energy.com
President-Elect:	David Shoore	shoore@gmail.com
First Vice President:	Norman Wells Jr.	nwellsjr@mcclureoil.com
Second Vice President:	Katrina Soundy	Katrina.soundy@chevron.com
Treasurer:	Ashton Faulkner Bruyere	afaulkner@beryloil.com
Secretary:	Laura Vargas	lvargas716@yahoo.com
Previous President:	Mike Raines	Raines.ma@gmail.com
YPFT Chairman	Robert Campbell	nebularc@yahoo.com
Luncheon Chairman	OPEN POSITION	
Webmaster	OPEN POSITION	



PBS-SEPM
2900 Front St,
Midland, TX, 79701

Web: www.pbs-sepm.org
Phone: 432-279-1360
Fax: 432-683-8739
Email: info@pbs-sepm.org

If you are interested in a sponsorship opportunity, please call PBS-SEPM for more details at (432) 279-1360 or e-mail info@pbs-sepm.org.

Do you have an idea for an interesting luncheon talk? Have a core workshop you'd like to present? Have some suggestions on how PBS-SEPM can better serve the geologic community? Send us an e-mail to share your idea, your PBS-SEPM Executive Board wants to hear from you!

PBS-SEPM is the Permian Basin Section of SEPM—the Society for Sedimentary Geology. However, you do not need to be a SEPM member or a geologist to join PBS-SEPM.

PBS-SEPM prides itself on its success in providing high caliber speakers as well as exceptional core workshops and field trips. PBS-SEPM also provides scholarships to graduating high school students in western Texas and New Mexico. These scholarships are on occasion, offered to college students that have declared their desire to pursue a degree in the geosciences. Through continued support from the industry, PBS-SEPM can continue to provide excellent educational opportunities for the oil and gas industry.

If you would like to join PBS-SEPM, you may visit our website to learn more about us, download a membership form, and learn how to get involved.

Scholarship and Distinguished Speaker Events (2021-2022)

Wendell J. Stewart Fund: so named for the famous sequence stratigrapher, was initially funded by the family, and then later through PBS-SEPM members who have contributed over the years. In the past, the scholarship was established to award high school students intending to pursue a college education in the geoscience field (declared major), and had evolved to include college students actively pursuing a geology degree when there were no other qualified candidates. Funding for this scholarship has waxed and waned over the years with the changes of the petroleum industry and because this scholarship is set up in such a manner that only the interest can be used to distribute funds, most scholarships in the last 30 years have been awarded through the PBS-SEPM main budget and not the scholarship fund.

Robert Read Distinguished Lecturer Fund: was founded to honor a bright, young geologist who had been an active member of both PBS-SEPM and WTGS and was tragically killed by a drunk driver. Donations from various members of both societies contributed to a membership donation fund that both encourages our continuing education efforts by helping offset the cost of bringing in a distinguished lecturer, usually in geosciences, but not required.