



PBS-SEPM NEWSLETTER



October 2018

Inside this issue:

PBS-SEPM September Luncheon Information	2
PBS-SEPM Publication: DVD order form	3
PBS-SEPM Publication: Carbonate Well Log & Core Data Analysis Spreadsheet v. 4.0 (\$40)	4
• Announcements • Upcoming Workshops	5
• Executive Board (2018-2019) • Corporate Sponsors	6
• Individual Sponsors • About PBS-SEPM	7

PBS-SEPM Luncheon Talk October 16, 2018

Speaker: Jason S. Mintz, Ph.D.
Geologist, Apache Corporation

"Processes, Products & Pit-falls: Organic matter enrichment in the Permian Basin and the utility of core descriptions in unconventional reservoir characterization"

Tuesday
October 16, 2018 - Midland College, Carrasco Room, 11:30 a.m.

Please Note: Luncheon cost has increased to \$25 per person.

October 2018

- **16: PBS-SEPM Luncheon and Annual meeting:** (11:30am-1pm) **Speaker: Jason S. Mintz**

November 2018

- **20: PBS-SEPM Luncheon** (11:30am-1pm)

December 2018

- **No Luncheon due to Holidays**

PBS-SEPM Luncheon Talk – October 16, 2018

Speaker: Jason S. Mintz, Ph.D.
Geologist, Apache Corporation

“Processes, Products & Pit-falls: Organic matter enrichment in the Permian Basin and the utility of core descriptions in unconventional reservoir characterization”

Tuesday October 16, 2018
Midland College, Carrasco Room, 11:30 a.m.

Please Note: Luncheon cost has increased to \$25 per person.

Abstract

Whole core analysis has become an integral component of evaluating and characterizing unconventional reservoir systems. A primary utility of core is in quantifying various reservoir properties as inputs and calibration points for petrophysical and geophysical models. In this presentation I will ask (and try to answer) what are some of the utilities of a semi-quantitative core description in the context of the much quantified present of the Permian Basin. We will examine utilities in addressing both conceptual and empirical problems that can emerge if the core description and rock fabric are ignored in favor of chemical composition based litho-typing schemes from XRF data, which have become increasingly popular due to their empirical, fast and cheap nature. We will also examine the mechanisms which control the enrichment of organic matter in the Wolfcampian and Leonardian sections in the Midland Basin from core descriptions and how process-based sedimentological analysis and categorization of mudstone reservoirs can increase your understanding of the system and become more predictive at different scales of resolution.

Biography

I was born and raised in Philadelphia, Pennsylvania where I became a geologist at the age of 8 much to the chagrin of my family. I did my undergraduate and masters work at Temple University and received my PhD from Baylor University. I worked for Anadarko Petroleum Corporation for 5 years and CGG for 1.5 years in Houston before moving out last year to Midland with Apache Corporation.



PBS-SEPM Publications



PBS-SEPM Symposia And Core Workshops on 3 DVDs



This is your opportunity to have the entire PBS-SEPM publication library (1955 – 2007) at your finger tips. There is a fully searchable Table of Contents—find a topic or author just by typing in the word(s). All publications are in Adobe PDF with all major articles being bookmarked, and all the figures are linked in the text for quick reference. Those areas that are off limits to geologists like the Glass Mountains or Sierra Diablos have been written up in these publications. Numerous out-of-print publications and figures and/or plates not published in the original guidebooks are now available in this library.

This includes all publications, even the special publications and coveted core workshops. Can you imagine the hidden treasures you might find? Here is your chance to uncover them in this special three (3) DVD set. *Buy one or all.*

DVD I - Symposiums & Guidebooks (1955-1989)

Member- **\$75.00** plus 8.25% tax and \$5.00 shipping and handling

Non-Member- **\$100.00** plus 8.25% tax and \$5.00 shipping and handling

DVD II - Symposiums & Guidebooks (1990-2007)

Member- **\$75.00** plus 8.25% tax and \$5.00 shipping and handling

Non-Member- **\$100.00** plus 8.25% tax and \$5.00 shipping and handling

DVD III - Core Workshops (82, 83, 85, 98) & Special Publications (A, 88-28, 96-39, 84)

Member- **\$75.00** plus 8.25% tax and \$5.00 shipping and handling

Non-Member- **\$100.00** plus 8.25% tax and \$5.00 shipping and handling

Entire Set of three DVDs

Member Price **\$200.00** plus 8.25% tax and \$5.00 shipping and handling

Non-Member Price **\$250.00** plus 8.25% tax and \$5.00 shipping and handling

Name: _____ **Company/Affiliation:** _____

Mailing Address: _____

Business Phone: _____ **Fax:** _____ **Email:** _____

Payment: check, cash or credit card

☐ I authorize you to charge the above to my:

☐ MasterCard ☐ VISA ☐ American Express Exp. Date: _____

Card number: _____ **Signature:** _____

Make checks payable to **PBS-SEPM**.

Please send registration and payment information: PBS-SEPM, P.O. Box 6054, Midland, TX 79704

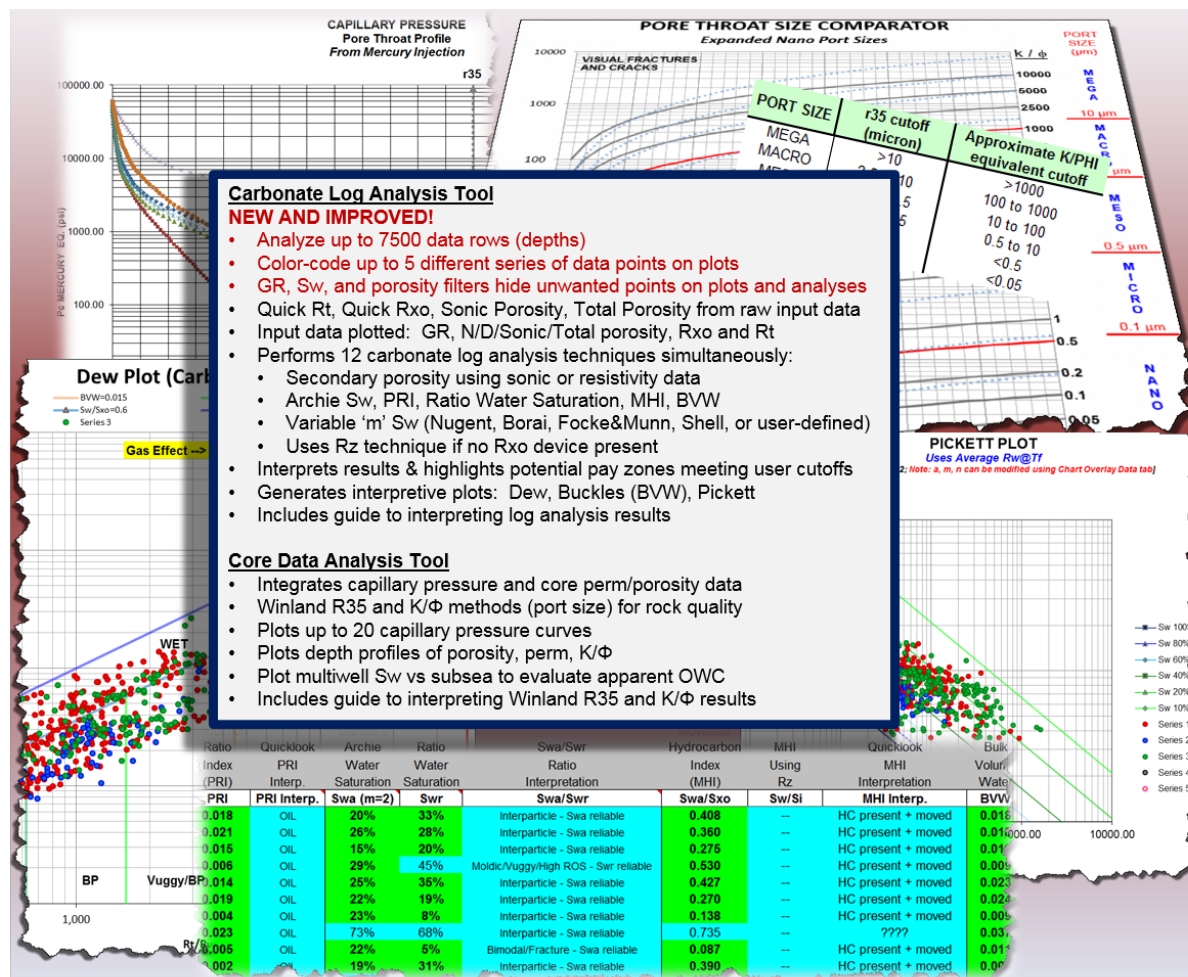
For additional information **contact: PBS-SEPM office** (432) 279-1360 or info@pbs-sepm.org.



PBS-SEPM Publication

Carbonate Log Analysis Spreadsheet v. 4.0

By: Cory L. Hoffman
Designed for Microsoft Office Excel 2013



INTRODUCTORY PRICE: \$40 (all proceeds go directly to PBS-SEPM)

- Get 2 tools for 1 low price — spreadsheet includes carbonate log analysis AND core data analysis tools
- Flash drive contains current version (Excel 2013; v. 4.0) and previous version (Excel 2010; v. 3.2) of spreadsheet
- Price includes free upgrades within version class (v. 3, v.4, etc.) for each registered user

Quantity: _____ Total: \$ _____ (plus 8.25% sales tax; add \$5 for shipping/handling if mailing required)

Name: _____ Company/Affiliation: _____

Mailing Address: _____

Business Phone: _____ Fax: _____ Email: _____

Payment: check, cash or credit card

() I authorize you to charge the above (plus shipping if applicable) to my:

() MasterCard () VISA () American Express Exp. Date: _____

Card number: _____ Signature: _____

Make checks payable to PBS-SEPM.

Please send registration and payment information: PBS-SEPM, P.O. Box 6054, Midland, TX 79704

For additional information contact: PBS-SEPM office (432) 279-1360 or info@pbs-sepm.org



**PBS-SEPM
Core Workshop
March 2019**



** More Details Coming Soon**

PBS-SEPM Luncheon Cost Announcement

Effective September 18, 2018

**Luncheon cost is increasing from
\$20 to \$25 per person**

**This slight increase will help cover regular luncheon
catering costs.**

Please contact your current PBS-SEPM executive board with any questions.

PBS-SEPM Executive Board (2018-2019)

President:	Mohamed Zobaa	zobaa_m@utpb.edu
President-Elect:	Sandra Elliott	sandra.elliott@apachecorp.com
First Vice President:	Antony N. Giles	agiles@midland.edu
Second Vice President:	Brady T. Kolb	bkolb@sm-energy.com
Treasurer:	Ryan C. Thompson	ryan.thompson@apachecorp.com
Secretary:	Chantel Lines	clines@sm-energy.com
Previous President:	James Hawkins	jhawkins@callon.com
Board Advisor:		

Do you have an idea for an interesting luncheon talk? Have a core workshop you'd like to present? Have some suggestions on how PBS-SEPM can better serve the geologic community? Just click on the e-mail above & drop us a note, your PBS-SEPM Executive Board wants to hear from you!

Corporate Sponsorships (2018-2019)

Your Company Logo could be in this space showing your support of PBS-SEPM.

Your support lifts your corporate name within the Permian Basin.



PBS-SEPM is grateful for the generosity of these fine corporate sponsors !

If you are interested in a sponsorship opportunity, please call PBS-SEPM for more details at (432) 279-1360 or e-mail info@pbs-sepm.org.





PBS-SEPM
P.O. Box 6054
Midland, TX 79704

Phone: 432-279-1360
Fax: 432-683-8739
Email: info@pbs-sepm.org

We're on the Web!
www.pbs-sepm.org

*One tectonic plate
bumped into another
and said...
"Sorry! My fault."*

PBS-SEPM is the Permian Basin Section of SEPM—the Society for Sedimentary Geology. However, you do not need to be a SEPM member or a geologist to join PBS-SEPM.

Our non-profit society relies entirely upon the efforts of dedicated volunteers to serve the geological community—primarily through educational events. These events include monthly luncheon talks, core workshops, annual field trips, and special geological publications. Additionally, we are involved on the college campuses—reaching out to future earth scientists through scholarships, discounted memberships, and offering full-time geology students the ability to participate in professional-grade field trips at little to no cost.

If you would like to join PBS-SEPM, you may visit our updated website (www.pbs-sepm.org) to learn more about us, download or fill out a membership form, and learn how to get involved.

Individual Sponsors of PBS-SEPM (2018-2019)

Individual sponsors are advertised on the PBS-SEPM website and each Newsletter. Cost is \$85/year. If you are interested in a sponsorship opportunity, please call PBS-SEPM for more details at (432) 279-1360 or e-mail info@pbs-sepm.org.

Luncheon Sponsor: September and October 2018



Thank you!

Your Company Logo could be in this space showing your support of PBS-SEPM.

Both individual and corporate sponsorships are available