

Jan 01, 2021 Chisos Mountains Dan Sholly West Texas Geology FB Group

PBS-SEPM NEWSLETTER

January 2021

President's Letter— 2
Good Riddance to 2020, Welcome to 2021

AAPG/SPE MiT 3
Virtual January Luncheon, Speaker: Keri Vaught, Title: Retirement Plan Options When You Leave Your Employer

Renewed 4
Involvement... Editorial Piece by Jessica Pontiff

PBS-SEPM 5
January Luncheon, Speaker: Steve Melzer, Title: Carbon Management Opportunities in the Permian Basin-A Look at Both Evolving Policies & Optimal Targets

Residual Oil Zone 6
Core Workshop and Field Trip Registration Flyer

Young 7
Professionals & New Hire Field Trip Save the Date Flyer

Digital & Hard 8
Copy Library ~Publication Highlight~

PBS-SEPM 9
Publication: V.5 Carbonate Well Log & Core Data Analysis Spreadsheet

Corporate & Individual 10
Sponsors We appreciate your generosity

PBS-SEPM 11
Sponsorship Tiers & PBS-SEPM Executive Board 2020-2021

About PBS-SEPM 12
Wendell J. Stewart Scholarship Fund & Robert Read Fund

KEY DATES For January 2021 and February 2021

JANUARY 2021

- **12: WTGS Luncheon, [Virtual](#)**, 11:30am-1pm, Derek Buster, The Martin County Texas Super Stack: Developing the Sweetest Spot in the Midland Basin
- **18: AAPG/SPE MIT Webinar, Virtual**, 11:30am-1:00pm
- **19: PBS-SEPM Luncheon, Virtual & Bush Convention Center**, 11:30am-1pm
- **21: SPE-PB Luncheon, [Virtual](#)**, 11:30am-1pm, Dwayne Purvis, Climate, Covid, and Careers: A Look at a Changing Industry
- **22: TAMU Career Enhancement Event, Virtual**, 9:00am-4pm, Contact Kara Stark at tamu.spe.cee@gmail.com

FEBRUARY 2021

- **4: SPE-COSG Luncheon, The Petroleum Club**, 11:30am-1pm, TBD
- **9: WTGS Luncheon, Virtual**, 11:30am-1pm, TBD
- **16: PBS-SEPM Luncheon, Bush Convention Center & Virtual**, 11:30am-1pm, Shane Prochnow, Machine Learning for Subsurface Applications



President's Column

I am sad to report that the geologic community lost two more outstanding members over the Christmas / New Year holiday. Former AAPG President Will Green (the only AAPG President to ever win an election as a write-in candidate) and local female pioneer and owner of Sunshine Exploration, Sally Meador-Roberts, both passed away in December, and I considered both as friends. Many of you, no doubt, have fond memories of excellent conversations with one or both of these outstanding geoscientists. Earlier in December, I found out that we also lost AAPG GeoLegend, Jerry Sides, in the fall. All of these folks are legends in their own rights will be deeply missed in the Permian Basin Geoscience circles. Please take a moment to remember these valued members of our group. This year seems to have been particularly hard on us. If you would like to submit a short memorial (500 words or less, with or without a photo) to these or other geoscientists we lost in 2020, you may submit those to the office by the end of January for inclusion in next month's Newsletter via email to: info@pbs-sepm.org.

As a nerd of a certain variety, I have looked forward to writing 2020 as a date since the early 2000s, thanks in part to the news program of that name, visits to the eye doctor, and comments about hindsight. However, I must now say that I am glad to have it over with, and it wasn't nearly as fun as I had imagined. Goodbye, 2020... and DO let the door hit you on the way out!

The new year is shaping up to be much better, so far. There are three varieties of Covid-19 vaccines available, and oil prices are inching upward. Both conditions should help stabilize the economy and improve profitability for oil and gas workers, getting more of our colleagues back to work. Therefore, your Board is planning to reinstate our delayed or canceled programs in the new year. The ROZ Core Workshop and Field Trip is scheduled for the weekend after Tax Day and the New Hire / Intern / Young Professional Field Trip / Orientation Program is planned for early June. So... if you have interns coming in this summer (engineers, geoscientist, and/or landmen), please let us know now so we can start planning accordingly. (Send an email to the office or speak with Chairman Robert Campbell.)

We have all of our monthly luncheon spots filled through the end of spring, with topics across the gambit, such as: CO2 applications, data science, starting up a company from scratch, outcrop studies on the Bone Spring, and the latest stratigraphic and karst research on the Grand Canyon! We will continue the dual-format option of having in-person luncheons for those able and willing to join us at the Bush Convention Center, and on-line for those who are out-of-town or are unable to attend in person. The spring program will culminate in the official PBS-SEPM Annual Meeting in May (with a technical talk as the main event, of course). Plan to join us (in some manner) on the third Tuesdays of the month (plus special events).

Finally, we are working with RPS-Nautilus on a few training courses we can bring to the table over the next few months (see Dan Scott's article in the December newsletter for more detail). If you have specific topics you would like to see, please let Dan know.

Mike Raines
PBS-SEPM President 2020-2021



AAPG/SPE: Permian Basin Members in Training Webinar – January 18, 2021

Keri Vaught
Financial Advisor

“Retirement Plan Options When You Leave Your Employer”

Monday, January 18, 2021—[Virtual](#), 11:30 a.m.
RSVP [Here](#) or Scan QR Code
~Unemployed members and students who want a discount
can reach out to fakintunji@unitexoil.com~



Abstract

Sure, it's not your first thought when you leave an employer but it's an important one – What happens to the retirement assets you have built up in your previous company's retirement plan when you leave? What happens to the company stock you left there? Depending on your situation and/or the retirement plans details, there are essentially 4 options. I will go through each of the options and the implications of each. We will also discuss the pros and cons of each option, along with some current legislation that could affect your decision.

Biography

Keri Vaught is a licensed Financial Advisor. Finance and all things money intrigued her, even as a child – how to control it, rather than having it control her. After seeing times of prosperity and times of struggle for those she loved most, and it was apparent who planned and who did not. Wanting to help is what led Keri to her career as a financial advisor.

After receiving her bachelor's degree from Texas A&M University in 2013 (Whoop!), she married her husband and moved to Midland, TX in 2014. This has been her home ever since. Keri and her husband, Tyler, are proud foster parents and are passionate about helping the children in their community.



It is very important to Keri to serve her community and she is involved in many local organizations including Midland Chamber of Commerce, Junior League of Midland, Midland A&M Club, Uptown BPW, Midland Rotary West, and her local church. She enjoys the outdoors with her dogs, reading, and anything social.

“After climbing the mountain, you can finally enjoy the view.”

-pinterest 2021 retirement quote for geologists

Renewed Involvement...



Greetings, Happy New Year and welcome to 2021, which made a quiet and snowy West Texas entrance. In recognition of the New Year, I would like to open with a resolution that I made last year, which leads to me writing this today. One of my resolutions for 2020 was to renew my involvement in the local professional societies. Fortuitously, in Spring of 2020 I was contacted by Mike Raines, who asked if I would be willing to run for board position with PBS-SEPM. I accepted the request and volunteered to run for the office of 1st Vice President.

Why make such a resolution? The simple answer is that I missed the events, luncheons, learnings and the people that helped Midland become home and a place to grow, not just a place to work. The few luncheons I managed to attend in the time preceding my resolution, I found myself no longer familiar with many of the faces in attendance and realized I had been absent for too long. It is easy to drift away as life changes, work evolves and things get busy.

I arrived in Midland during the Summer of 2007, just weeks after my husband (Eric Nelson) and I completed our Master's degrees at the University of Arkansas. I started out on a wireline truck for six months with Schlumberger. Although, I was out at well sites often during that time, mostly on vertical gas wells then, I learned about the local professional geology related societies. Somehow, between work and weekend outings to explore places like Monahan's Sandhills and the Davis Mountains, I managed to attend a couple luncheons and even the WTGS Fall Symposium that year. By 2008 I was out of the field and in an office downtown surrounded by colleagues active in both SEPM and WTGS who encouraged me to participate as well. I started simple; for a couple years, I was the one who set up the computer and dimmed the lights for both SEPM and WTGS luncheons.

I have been fortunate across my career in Midland to have employers facilitate continued involvement in the professional societies. Over a decade ago, while at Schlumberger, I attended one of the events that now falls under my position as 1st VP, the Young Professional and Intern Field Trip. Since this is a multidisciplinary event, my husband also attended, in a land position back then. After Schlumberger, in 2011, I joined Berry Petroleum and continued to be highly involved in the local societies. Over the years I held various board positions with WTGS and SWS-AAPG. After starting work at Concho in 2014 and venturing in the world of steering horizontal wells then having our daughter in 2015, I took a break for a couple of years from commitments outside of work and home. I am glad now, to have the opportunity to be on the board of PBS-SEPM. To echo the recent editorial piece by Norman Wells Jr., if you are interested please consider volunteering for one of the committees, it is a great way to be involved and a help to the society.

Midland has changed over the years, having more to offer now than in 2007 when I moved here, not just professionally speaking, although we are blessed with professional societies for basically each and every aspect of our industry. I think the culture and community here in West Texas has grown to what is because of the people, companies and organizations that make their home here. It is great to be involved again and I look forward to what 2021 has to offer professionally and personally - in just a couple of weeks we will welcome another daughter!



Happy New Year! Thank You!
 Jessica L. Pontiff
 1st Vice President 2020-2021



PBS-SEPM Luncheon Talk – January 19, 2021

L. Stephen Melzer
Melzer Consulting

“Carbon Management Opportunities in the Permian Basin - A Look at Both Evolving Policies and Optimal Reservoir Targets ”

Tuesday, January 19, 2021 - [Bush Conventional Center & Virtual](#), 11:30 a.m.
~Will be available virtually through [GoToMeeting](#).~

Abstract

Carbon Management has shifted from a politically charged, controversial objective to what some are now calling an International imperative. The move to reduce the carbon dioxide (CO₂) emissions from industrial facilities has focused first on coal and is moving toward oil and natural gas. No doubt the job of replacing hydrocarbon fuels will be difficult, time consuming, and challenged with economic sustainability but has reached a level where all of society will need to respond. Carbon Capture, Utilization and Storage should begin to play a very large role and the Permian Basin is well positioned to affect both the speed of greenhouse gas capture and the ultimate security of storage.

Establishing a penalty price on carbon emissions has already entered into the discussion with programs such as the Low Carbon Fuel Standard, Emission Trading Credits, and the 45Q Tax Credit in the U.S. Deployment of CO₂ EOR for producing low carbon oil while storing CO₂ is clearly an important short-term bridge for larger scale carbon capture and storage as a waste product. The volume of pore space for CO₂ storage is enormous in the San Andres formation alone – both in the mature fields and within the brownfield and greenfield residual oil zones (ROZs) so common to that formation. CO₂ EOR has shown that capturing and transporting the pre-emission CO₂ is clearly passed beyond a technical obstacle and the challenges lie now in the economic project thresholds and scales of deployment.

The ROZs can be thought of as hybrid deep saline reservoirs with the capability to produce some lower carbon oil to offset costs of industrial CO₂ capture projects. Regulations for that industry are in-place and already being utilized in main pay zones and in the ROZs.

ROZ research in the San Andres formation has serendipitously discovered an explanation of the origins of mixed- and fully oil-wet reservoirs. The knowledge has recently been extended to clastic reservoirs as well. Biogeochemical processes are at the heart of the new discovery and explaining long-puzzling aspects of levels of residual oil saturations in the hybrid deep saline reservoirs.

Biography

Steve Melzer is a consulting engineer in Midland, Texas specializing in CO₂ injection projects, enhanced oil recovery (EOR), reservoir properties and horizontal well reservoir depressuring projects. He also provides engineering and business planning services for a variety of U.S. and International commercial clients in the oil and gas, industrial gas, coal and power sectors as well as advising policy makers and non-governmental organizations on the subject of CO₂ EOR and carbon capture and storage. He has also originated and operated many exploration and production projects in the oil and gas sector. He has conducted research on the origin and distribution of residual oil zones and their commercial exploitation through the use of both CO₂ EOR and horizontal wells.

He has been the director of the 26 years of the annual CO₂ Flooding Conference and assists in organizing the EOR Carbon Management Workshop, both held each year in December in Midland, Texas. He has served on the Governor of Texas' FutureGen Board, as a past Director of The University of Texas of the Permian Basin's Petroleum Industry Alliance, and continues to serve on several out of state Technical Advisory Boards as well as local Advisory Boards and Councils.

Steve resides in Midland, Tx. He has a BS in geological engineering from Texas A&M and a MS degree in Engineering from Purdue University





Permian Basin Section-SEPM ROZ Core Workshop & Field Trip



Friday April 16 (8 AM-2 PM), Bush Convention Center, Midland, Texas
Saturday-Sunday April 17th-18th, 2021 – Field Trip, New Mexico

Registration Form

PBS-SEPM is Hosting a Two-Part Residual Oil Zone (ROZ) Core Workshop and Field Trip

The ROZ Core Workshop will begin at 8 AM in the Ballroom at the Bush Convention Center. Light pastry options will be available for breakfast. We will have a total of 5 cores available:

- Goldsmith San Andres Unit #1-335A (Main Pay), XTO, Ector - Goldsmith San Andres Unit # 1-9-WC (ROZ), XTO, Ector
- Goldsmith-Landreth San Andres Unit 190, Kinder Morgan, Ector - Hanford San Andres Unit #501, Faskin, Gaines
- Shafter Silver District, Ross Mine Formation, Marfa Basin (*Faults, Hydrothermal Silver, and Oil*), Pecos (2 Cores)
- Cleveland # A-601, Riley Permian, Yoakum - Miss Kitty # 669-704, Riley Permian, Yoakum

Lunch at the Bush Convention Center will be included. The workshop will end at 2 PM. Field trip attendees will board SUVs to head to the Stevens Hotel in Carlsbad, New Mexico. Friday evening will include a group dinner along with an overview of the outcrop stops. Saturday begins at 6 AM (MT) with breakfast at the hotel and a 7 AM departure to Laurel Canyon west of Carlsbad. Box Lunch is provided (both days). Saturday stops end at Stone Canyon. Everyone is free to decide their individual plans for dinner. Sunday morning's schedule is identical to Saturday, with stops starting at Cloudcroft, then moving to Northern Ruidoso before heading east. Sunday's stops will include the present day lower San Andres recharge area west of Roswell, which has well developed karst. The trip will end with a return to Midland, arriving around 6 PM at the Bush Center.

If you are interested in sponsoring this event, either for the food, supplies, transportation, or student sponsorship, please send an email to info@pbs-sepm.org with your name, company, contact information, and amount you would like to contribute.

If you are interested in driving one of the 5 SUVs on this trip, please send an email to info@pbs-sepm.org with a copy of your Driver's License, Insurance Information, and a few notes of previous experience driving off road in SUVs.

Field trip attendance is limited to 35 registrants, on a first-come, first-served basis.

The Core Workshop and Field Trip give you a chance to see:

- The ROZ interval (and its oil saturation variations with depth)
- Lower San Andres Limestones below the ROZ
- Pay Zones in the Horizontal San Andres Play*
- San Andres meteoric water recharge area
- Impact of Meteoric water-sweep (on fluids and rock)
- Maturity enhancements in clastics exposed to volcanics
- Diagenesis related to volcanic hydrothermal waters
- Stratigraphic and depositional styles of the San Andres
- Karst/ collapse breccia in San Andres in outcrops
- Two newly slabbed silver mine cores, never before described

* Yoakum is the most active area, with 250 wells since 2014, producing 300,000 BOPD. Riley's cores are in the heart of the play.

Registration Fees

Core and Field Trip:	PBS-SEPM Members \$425 ()	Non-Members \$460 ()	** Students \$325 ()
Workshop Only:	PBS-SEPM Members \$250 ()	Non-Members \$285 ()	** Students \$125 ()
Field Trip Only:	PBS-SEPM Members \$350 ()	Non-Members \$385 ()	** Students \$200 ()

Name: _____

Company/Affiliation: _____

Mailing Address: _____

Business Telephone: _____ Email address: _____

Payment: check, cash, or online with credit card

Make checks payable to PBS-SEPM & send order form to: PBS-SEPM, 2900 Front St., Midland, Texas 79701

To purchase online, go to <https://www.pbs-sepm.org/events-1/roz-core-workshop-and-fieldtrip> and pay by card

** - Student rate is limited to full time students who are not employed full time



PBS-SEPM
Young Professional & Intern Field Trip
Save the Date
June 4th - 6th, 2021



Designed for Engineers, Geologists, and Landmen

A three day long multi-disciplined field trip in the **Guadalupe Mountains** for geology, engineering and land young professionals, interns, and new hires.

The intention is to educate participants in combining outcrop data with industry exploration and production techniques in a multi-disciplined environment.

- Participants will have opportunity to observe world-class outcrops of shelf to basin deposits that are direct analogues to producing fields in the Permian Basin.
- Lectures covering geology of west Texas, carbonates, sequence stratigraphy, quick and simple log and engineering calculations and land practices.
- Classroom exercises on general land practices, sequence stratigraphy, log correlation, water saturation determination, seismic interpretation and production analysis.

Participants will leave Midland, TX on Friday, June 4, and travel to Carlsbad, NM, where they will stay at the Stevens Inn for both Friday and Saturday night. In the evening of Sunday, June 6, all will return to Midland, TX.

~More information to come as well as our registration flyer. Also, reach out to [Robert Campbell](#) for questions.~



PBS-SEPM Publications



PBS-SEPM PUBLICATION HIGHLIGHT

“Marathon Thrust Belt: Structure, Stratigraphy, and Hydrocarbon Potential”

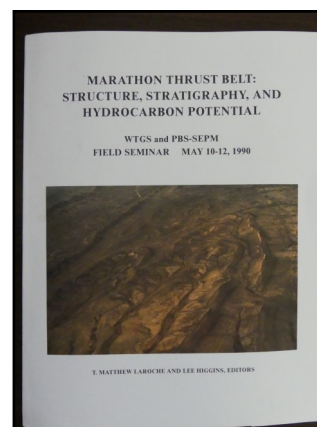
1990

[\\$13.13 Members \\$17.50 Non-Members](#)



Synopsis of Field Seminar of Marathon Thrust Belt
Section I: Road Logs Day 1 – Day 3

Section II: Technical Papers covering regional setting, local stratigraphy and structure, and remote sensing with authors: Timothy Reed, David Strickler, Garner Wilde, Paul Noble, Nobuhiro Imoto, Earle McBride, Timothy Diggs, and Robert Borger



Entire PBS-SEPM publication library (1955 – 2007)

There is a fully searchable Table of Contents—find a topic or author just by typing in the word(s). All publications are in Adobe PDF with all major articles being bookmarked, and all the figures are linked in the text for quick reference. Those areas that are off limits to geologists like the Glass Mountains or Sierra Diablos have been written up in these publications. Numerous out-of-print publications and figures and/or plates not published in the original guidebooks are now available in this library.

DVD I - Symposiums & Guidebooks (1955-1989)

Member- \$125.00 plus 8.25% tax and \$5.00 shipping and handling
Non-Member- \$150.00 plus 8.25% tax and \$5.00 shipping and handling

DVD II - Symposiums & Guidebooks (1990-2007)

Member- \$125.00 plus 8.25% tax and \$5.00 shipping and handling
Non-Member- \$150.00 plus 8.25% tax and \$5.00 shipping and handling

DVD III - Core Workshops (82, 83, 85, 98) & Special Publications (A, 88-28, 96-39, 84)

Member- \$125.00 plus 8.25% tax and \$5.00 shipping and handling
Non-Member- \$150.00 plus 8.25% tax and \$5.00 shipping and handling

Entire Set of three DVDs

Member Price \$275.00 plus 8.25% tax and \$5.00 shipping and handling
Non-Member Price \$300.00 plus 8.25% tax and \$5.00 shipping and handling

Payment: check, cash or online with credit card

**Make checks payable to PBS-SEPM & send order form to: PBS-SEPM, 2900 Front St, Midland, TX, 79701
To purchase online, click [HERE](#) and pay with credit card**

For additional information contact: PBS-SEPM office (432) 279-1360 or info@pbs-sepm.org.

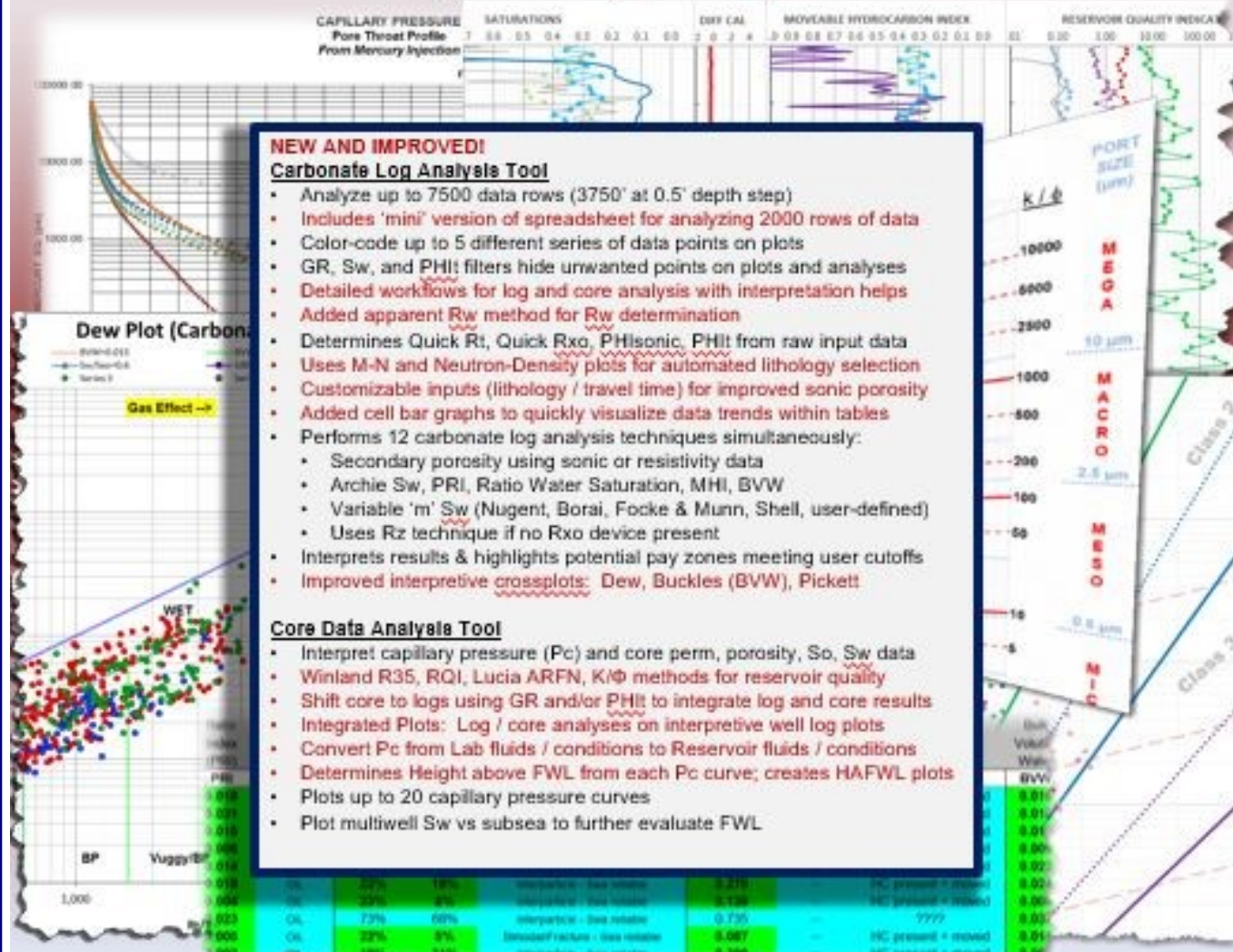


Carbonate Log & Core Analysis Spreadsheet v. 5.0

By Cory L. Hoffman, Ph.D.

Major Upgrade (January 2020)! [Designed for Microsoft Excel 2013]

Carbonate Log analysis draws heavily upon teachings of George Asquith
Core Data analysis draws heavily upon teachings of Dan Hartmann



**Carbonate Log and Core Analysis Tool (\$50) – includes free 'mini' version and any in-version upgrades (5.x)
\$25 for Students with proof of Student ID**

Quantity: _____ Will Pick up at PBS-SEPM Office (Y/N)? _____

Sub-total: \$ _____

Shipping: \$ _____ [N/A if picking up at PBS-SEPM office]

Total: \$ _____

Name: _____ Company Affiliation: _____

Mailing Address: _____

Business Phone: _____ Email address: _____

Payment: check, cash or online with credit card

**Make checks payable to PBS-SEPM & send order form to: PBS-SEPM, 2900 Front St, Midland, TX, 79701
To purchase online, click on [link](#) and pay with credit card**

Corporate Sponsorships (2020-2021) - PBS-SEPM is grateful for the generosity of these fine corporate sponsors !

Platinum Sponsor



Your
Company
Logo
could be in
our
newsletter
showing
your
support of
PBS-
SEPM.

Individual Sponsors of PBS-SEPM (2020-2021)

***Your Business Card
Could be here!***

Individual sponsors are advertised on the PBS-SEPM website and each newsletter. Cost is \$50/year. If you are interested in a sponsorship opportunity, please call PBS-SEPM for more details at (432) 279-1360 or email info@pbs-sepm.org.

Your card will be in every newsletter and on the PBS-SEPM Website for one year from August to May.

Your
support
lifts your
corporate
name
within the
Permian
Basin.



Sponsorship Information (2020-2021)

Our non-profit society relies entirely upon the efforts of dedicated volunteers to serve the geological community—primarily through educational events. The PBS-SEPM hosts luncheon lectures, core workshops and field trips that are led by experts in their chosen areas of the geosciences. If you would like to sponsor the PBS-SEPM in anyway, we have various levels of commitment you can choose from.

Platinum: \$1500+: Company Logo for 2 years on YPFT field trip, core workshops, luncheon slides, newsletters, website, or new publications (from date of donation)

Gold: \$1000: Company logo for 1 year on the YPFT field trip (which includes guidebooks and other paraphernalia-stickers, pens/pencils, rite in the rain books), luncheon slides, newsletter, and website

Silver: \$700: Logo on the core workshop / one day field trip (which includes guidebooks), luncheon slides, newsletter, and website

Bronze: \$400: Will get their logo on all PBS-SEPM luncheons, newsletters, and the website.

Aluminum: \$250: Will get logo on all luncheons slides, and table tent for one luncheon date.

If you are interested in a sponsorship opportunity, please call PBS-SEPM for more details at (432) 279-1360 or e-mail info@pbs-sepm.org.

PBS-SEPM Executive Board (2020-2021)

President:	Mike Raines	raines.ma@gmail.com
President-Elect:	Daniel Scott	dscott@sm-energy.com
First Vice President:	Jessica Pontiff	jpontiff@concho.com
Second Vice President:	Norman Wells Jr.	nwellsjr@mccloreoil.com
Treasurer:	Ashton Faulkner Bruyere	afaulkner@beryloil.com
Secretary:	Alexis Iwasiw	alexis.iwasiw@outlook.com
Previous President:	Sandra Elliott	sdelliott1234@gmail.com
YPFT Chairman	Robert Campbell	nebularc@yahoo.com
Luncheon Chairman	OPEN POSITION	
Webmaster	Frank Fullbright	fafullbright@paalp.com



PBS-SEPM
2900 Front St,
Midland, TX, 79701

Web: www.pbs-sepm.org
Phone: 432-279-1360
Fax: 432-683-8739
Email: info@pbs-sepm.org

If you are interested in a sponsorship opportunity, please call PBS-SEPM for more details at (432) 279-1360 or e-mail info@pbs-sepm.org.

Do you have an idea for an interesting luncheon talk? Have a core workshop you'd like to present? Have some suggestions on how PBS-SEPM can better serve the geologic community? Send us an e-mail to share your idea, your PBS-SEPM Executive Board wants to hear from you!

PBS-SEPM is the Permian Basin Section of SEPM—the Society for Sedimentary Geology. However, you do not need to be a SEPM member or a geologist to join PBS-SEPM.

PBS-SEPM prides itself on its success in providing high caliber speakers as well as exceptional core workshops and field trips. PBS-SEPM also provides scholarships to graduating high school students in western Texas and New Mexico. These scholarships are on occasion, offered to college students that have declared their desire to pursue a degree in the geosciences. Through continued support from the industry, PBS-SEPM can continue to provide excellent educational opportunities for the oil and gas industry.

If you would like to join PBS-SEPM, you may visit our website to learn more about us, download a membership form, and learn how to get involved.

Scholarship and Distinguished Speaker Events (2020-2021)

Wendell J. Stewart Fund: so named for the famous sequence stratigrapher, was initially funded by the family, and then later through PBS-SEPM members who have contributed over the years. In the past, the scholarship was established to award high school students intending to pursue a college education in the geoscience field (declared major), and had evolved to include college students actively pursuing a geology degree when there were no other qualified candidates. Funding for this scholarship has waxed and waned over the years with the changes of the petroleum industry and because this scholarship is set up in such a manner that only the interest can be used to distribute funds, most scholarships in the last 30 years have been awarded through the PBS-SEPM main budget and not the scholarship fund.

We are proud to announce that we had two receivers for the Wendell J. Stewart Scholarship Fund in May 2020: Vanessa Armendariz, an undergraduate petroleum geologist at UTPB, and Heather Dudley, a paleontology graduate student at Sul Ross.

Robert Read Distinguished Lecturer Fund: was founded to honor a bright, young geologist who had been an active member of both PBS-SEPM and WTGS and was tragically killed by a drunk driver. Donations from various members of both societies contributed to a membership donation fund that both encourages our continuing education efforts by helping offset the cost of bringing in a distinguished lecturer, usually in geosciences, but not required.