

PBS-SEPM NEWSLETTER

November 2021

President's Letter— 2
Continuing
Transitions

Call for 3
Volunteers
Board updates

PBS-SEPM 4
Luncheon location
change Parking**
update**

PBS-SEPM 5
November
Luncheon, Speaker:
Dr. Robert Lindsay,
Title: "Requisites of
Cementation and
Dissolution"

Membership 6
Consider joining if
your not already a
member

PBS-SEPM 7
Merchandise

Digital & Hard 8
Copy Library
~Publication
Highlight~

PBS-SEPM 9
Publication: V.5
Carbonate Well Log &
Core Data Analysis
Spreadsheet

Corporate & 10
Individual
Sponsors
We appreciate your
generosity

PBS-SEPM 11
Sponsorship Tiers
& PBS-SEPM
Executive Board
2021-2022

About PBS-SEPM 12
Wendell J. Stewart
Scholarship Fund &
Robert Read Fund



KEY DATES For November 2021 and December 2021

NOVEMBER 2021

- **4th : SPE PB** Luncheon, Petroleum Club of Midland
- **9th : WTGS** Luncheon, Bush Convention Center/Virtual, 11:30
- **10th : SPWLA-PB-** Nuclear Logging SIG 2021 Technical Meeting Pt.1— Virtual
- **16th: PBS-SEPM Luncheon, Planetarium at the Museum of the Southwest & Virtual, Dr. Robert Lindsay "Requisites of Cementation and Dissolution" 11:30am-1pm**

DECEMBER 2021

- **SPE PB** -No Luncheon
- **SPWLA-PB-** No Luncheon
- **14th: WTGS** Luncheon, Bush Convention Center/Virtual, 11:30
- **PBS-SEPM-** No Luncheon

Young Professional and Intern Field trip

June 9-12 2022

More information coming soon

President's Column

November President's Letter

I can't help but look back on this past year and reminisce on the wild roller coaster ride it has been. Of course, COVID has been the main talking point over the last 20 months, but the conversation has undoubtedly change within the Oil and Gas Industry. It is hard to believe that just a few months ago, a producer had to pay someone to take their oil; negative \$34/bbl is something that I don't think anyone could have predicted. With this price came talks of the end to O&G and fossil fuels. It is amazing what time can do. As of writing this, oil is hovering at \$83/bbl, a whopping \$110 price differential in less than a year!

One can not help but to be optimistic about this newfound life to O&G. However, the more you listen to anyone involved in the industry, a sense of cautious optimism arises. There seems to be a new found shift that is one of restraint. Yes, operators could ramp up production like crazy and we could drill ourselves into another bust, but that has not been the case yet. With this newfound restraint, we are starting to see the importance of understanding the science in the subsurface. Now is the time to invest in new skills and gain a new knowledge within you discipline whether it be G&G, Engineering or EH&S. There is no better place to gain skills and knowledge than through societies that bring in industry experts to share their knowledge with the future of the industry.

PBS-SEPM President

Dan Scott



Volunteer with PBS-SEPM!



If you are interested in volunteering with PBS-SEPM,
below are the Board Positions and Committees

Board Positions

President-Elect
1st Vice President
2nd Vice President
Treasurer
Secretary

Committees

Nominating
Honorary Life
Stratigraphic
Scholarship
Core Location
Dedicated Service Award
Distinguished Lecturer Series

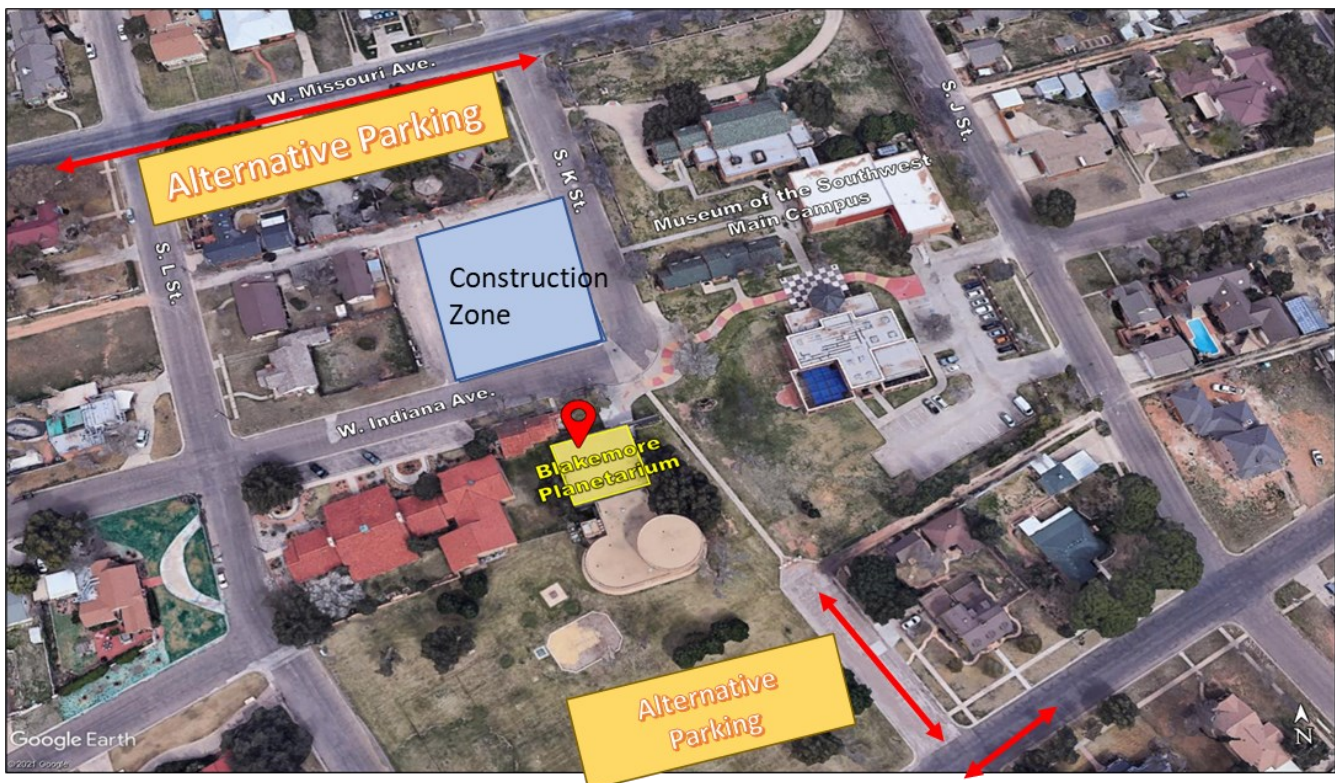
Webmaster
Publicity
One Day Field Trip Young
Professionals Field Trip
Lunch Arrangements
Luncheon Program
Speaker Award
Publications

Please email us at info@pbs-sepm.org to get more details about the position
or committee.

PBS-SEPM Luncheon ** LOCATION CHANGE and PARKING UPDATE*****Planetarium at the Museum of the Southwest***

1705 W. Missouri Ave., Midland, TX 79701

Due to construction, please use the alternative parking on W. Missouri Avenue, K Street and Holloway Avenue



PBS-SEPM Luncheon Talk – November 16, 2021



PBS-SEPM Technical Luncheon 11/16/2021, 11:30 AM, Museum of the Southwest Blakemore Planetarium

\$25 Early Bird Rate, \$30 at the Door or \$5 BYOL/Virtual

RSVP by 11/12/2021 to info@pbs-sepm.org or online at www.pbs-sepm.org



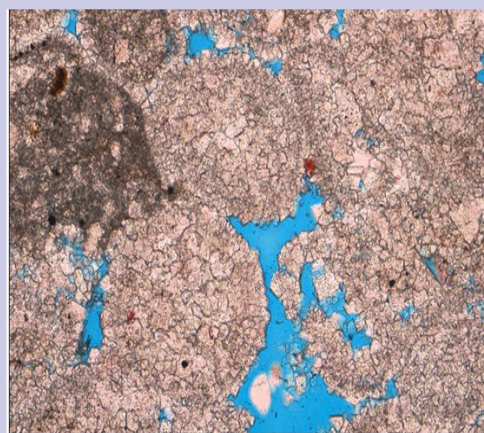
"Requisites of Cementation and Dissolution" *Dr. Robert L. "Bob" Lindsay – Lindsay Consulting, LLC*

ABSTRACT: Requisites of cementation and dissolution are: 1) Source of Ions or Lack of Ions; 2) Pipeline; 3) Pump; 4) Precipitator or Dissolver; and 5) Time.

1. **Source of Ions or Lack of Ions (S_w):** Refers to the water chemistry that passes through porous strata (unconsolidated sediment to lithified rock). These fluids can be of variable composition, from: 1) sea water; 2) fresh water; 3) brackish water; 4) evaporitic water; or 5) subsurface brine. Source of these fluids is the hydrologic cycle that continuously refreshes earth with water.
2. **Pipeline (ϕ):** Refers to porosity fairways, faults, and fractures that fluids flow through.
3. **Pump (\uparrow pressure \rightarrow \downarrow pressure):** Refers to the head of energy that drives fluids through porous strata. Fluid flow is from high pressure to low pressure. Examples are: 1) structural relief; 2) fault movement; 3) gravity; 4) subaerial exposure; 5) mechanical and chemical compaction; 6) rivers; 7) waves; and 8) currents.
4. **Precipitator or Dissolver ($\uparrow S_w$ or $\downarrow S_w$):** Refers to fluid flow reaching supersaturation or undersaturation as it passes through porous strata in the pipeline (catalyst).
5. **Time:** Associated with these processes is time, a long-term issue. If drawn out over long periods of time, intervals of strata can have multiple fluid chemistries pass through the pipeline to: 1) reduce porosity and permeability; 2) create or preserve porosity and permeability; or 3) repeat these processes again and again.

These processes can either: 1) create cement, which reduces total porosity and associated pore throat widths to reduce permeability; or 2) create or preserve porosity, which increases or preserves pore throat size and associated permeability.

In the final analysis, porosity is where water, oil, gas, brines, and minerals reside or are emplaced. These requisites are a simple and straight forward way to view the complexity of diagenesis that affects strata through time.



EMSU-650 3815.6 Ft 100X Porosity 11.0%, Perm 109.9 mD, 80.5 mD

BIOGRAPHY: Utah native and Green Beret, Dr. "Bob" Lindsay, began a geoscience career with a BS in Geology from Weber State College, followed quickly by an MS in Geology from Brigham Young University. Bob spent several years with Gulf Oil, Chevron, ChevronTexaco, and Saudi Aramco in research and applied positions. While at Saudi Aramco, Mr. Lindsay completed a PhD in Geology from the University of Aberdeen and taught graduate level carbonate sedimentology at King Faud University of Petroleum and Minerals. Bob is now consulting and teaching as an Affiliated Professor at Brigham Young University, Provo and Idaho. Dr. Lindsay and his wife Linda have five children, twenty grandchildren, and one great-grandchild.



Why Join or Sponsor PBS-SEPM?

- Help provide Geoscience scholarships
- YP/I Field Trip led by disciplined professionals
- Professional field trips led by topical experts
- Annual Core Workshops
- Monthly technical luncheon series
- Networking opportunities
- Special member pricing on publications

Only \$25 to join!



If you are not already a member, consider joining today!

PBS-SEPM is the Permian Basin Section of SEPM—the Society for Sedimentary Geology.

However, you do not need to be a SEPM member or a geologist to join PBS-SEPM.

PBS-SEPM prides itself on its success in providing high caliber speakers as well as exceptional core workshops and field trips. PBS-SEPM also provides scholarships to graduating high school students in western Texas and New Mexico. These scholarships are on occasion, offered to college students that have declared their desire to pursue a degree in the geosciences. Through continued support from the industry, PBS-SEPM can continue to provide excellent educational opportunities for the oil and gas industry.

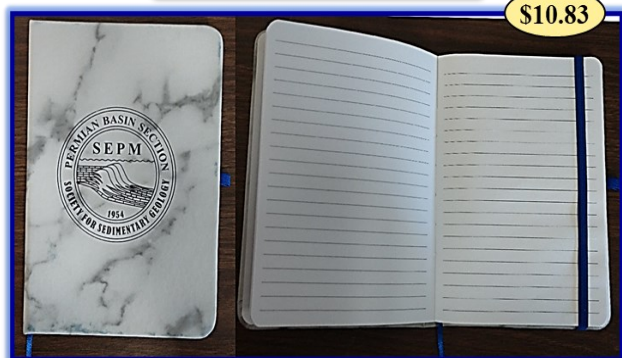
If you would like to join PBS-SEPM, you may visit our website to learn more about us, download a membership form, and learn how to get involved.

**Visit our website today to join, or sign up at one of our luncheons.
www.pbs.-sepm.org**

PBS-SEPM Merchandise



PBS-SEPM Merchandise

**MARBLE NOTEBOOK****LEATHER PADFOLIO****TUMBLER****VINYL STICKER**

TO PURCHASE ANY OF THESE ITEMS CONTACT:

PBS-SEPM office (432) 279-1360 or info@pbs-sepm.org and available at all Luncheons

Payment: check, cash or online with credit card

Make checks payable to PBS-SEPM & send order form to: PBS-SEPM, 2900 Front St, Midland, TX, 79701

To purchase online, click [HERE](#) and pay with credit card

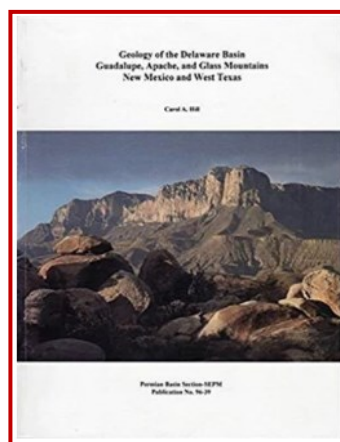
PBS-SEPM Publications

PBS-SEPM PUBLICATION HIGHLIGHT

**“Geology of the Delaware Basin, Guadalupe,
Apache & Glass
Mountains NM & West TX**

96-39

[\\$35.00 Members \\$40.00 Non-Members](#)

**Entire PBS-SEPM publication library (1955 – 2007)**

There is a fully searchable Table of Contents—find a topic or author just by typing in the word(s). All publications are in Adobe PDF with all major articles being bookmarked, and all the figures are linked in the text for quick reference. Those areas that are off limits to geologists like the Glass Mountains or Sierra Diablos have been written up in these publications. Numerous out-of-print publications and figures and/or plates not published in the original guidebooks are now available in this library.

DVD I - Symposiums & Guidebooks (1955-1989)

Member- \$125.00 plus 8.25% tax and \$5.00 shipping and handling
Non-Member- \$150.00 plus 8.25% tax and \$5.00 shipping and handling

DVD II - Symposiums & Guidebooks (1990-2007)

Member- \$125.00 plus 8.25% tax and \$5.00 shipping and handling
Non-Member- \$150.00 plus 8.25% tax and \$5.00 shipping and handling

DVD III - Core Workshops (82, 83, 85, 98) & Special Publications (A, 88-28, 96-39, 84)

Member- \$125.00 plus 8.25% tax and \$5.00 shipping and handling
Non-Member- \$150.00 plus 8.25% tax and \$5.00 shipping and handling

Entire Set of three DVDs

Member Price \$275.00 plus 8.25% tax and \$5.00 shipping and handling
Non-Member Price \$300.00 plus 8.25% tax and \$5.00 shipping and handling

Payment: check, cash or online with credit card

Make checks payable to PBS-SEPM & send order form to: PBS-SEPM, 2900 Front St, Midland, TX, 79701

To purchase online, click [HERE](#) and pay with credit card

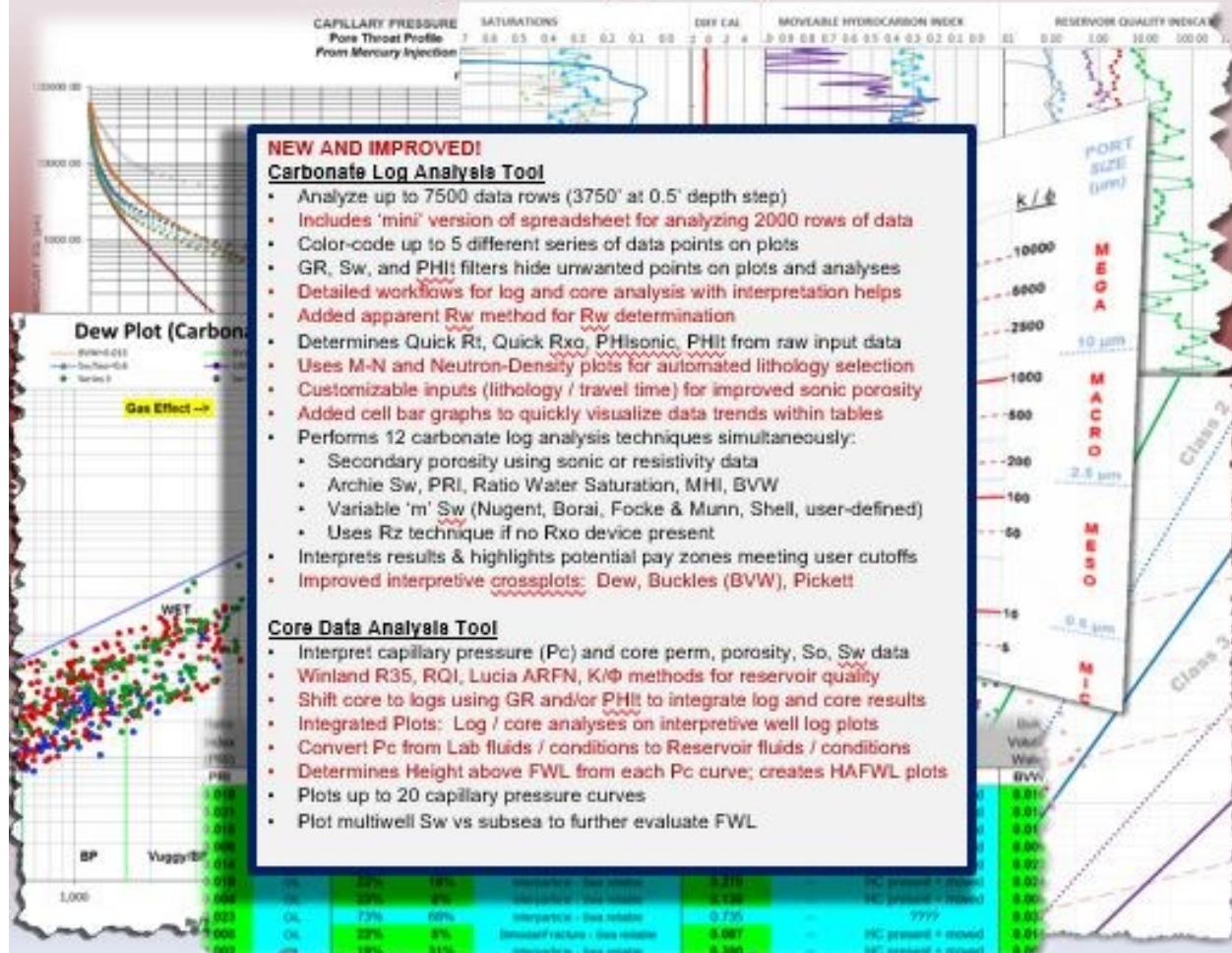
For additional information contact: **PBS-SEPM office** (432) 279-1360 or info@pbs-sepm.org



Carbonate Log & Core Analysis Spreadsheet v. 5.0 By Cory L. Hoffman, Ph.D.

Major Upgrade (January 2020)! [Designed for Microsoft Excel 2013]

Carbonate Log analysis draws heavily upon teachings of George Asquith
Core Data analysis draws heavily upon teachings of Dan Hartmann



We would like to thank, **Fox Pest Control**, a local Midland-Odessa Company, who have decided to sponsor with PBS-SEPM. They like to sponsor local organizations that are making a difference in their service area.

FOX

PEST CONTROL

Corporate Sponsorships (2021-2022)

PBS-SEPM is grateful for the generosity of these fine corporate sponsors !

Platinum Sponsor




BERYL
OIL AND GAS



Your
Company
Logo
could be in
our
newsletter
showing
your
support of
PBS-
SEPM.

Your
support
lifts your
corporate
name
within the
Permian
Basin.

Individual Sponsors of PBS-SEPM (2021-2022)



MARS EXPLORATION AND ENERGY, LLC

Michael A. Raines, President
CPG #6308, TxBPG #1506

Contract Reservoir Geology Services Mike@MarsExp.com
(432) 934-7202

- Waterflood Studies
- Enhanced Oil Recovery
- Carbon Sequestration
- Conventional Reservoirs
- General Permian Basin

1300 South County Rd 1117
Midland, Texas 79706

***Your Business Card
Could be here!***

Individual sponsors are advertised on the PBS-SEPM website and each newsletter. Cost is \$50/year. If you are interested in a sponsorship opportunity, please call PBS-SEPM for more details



Stephanie E. Perry
Chief Petrophysical Advisor
Petrophysics Consultant
(832) 532-1028 (Office)
(518) 428-7130 (Cell)
www.geomarkresearch.com
9748 Whithorn Drive, Houston, Texas 77095



Jimmy Bagley
Business Development Manager

6600 Fairbanks N Houston Rd
Houston, TX 77040
www.continentallabs.com

jbagley@continentallabs.com
operations 800.856.0237
c 832.564.6028



Sponsorship Information (2021-2022)



Do you have an idea for an interesting luncheon talk? Have a core workshop you'd like to present? Have some suggestions on how PBS-SEPM can better serve the geologic community? Send us an e-mail to share your idea, your PBS-SEPM Executive Board wants to hear from you!

Become a PBS-SEPM Sponsor and help support your local chapter

The PBS-SEPM hosts luncheon lectures, core workshops and field trips. We bring in guest speakers from all over the country to discuss current geological topics. Our lecture series, along with core workshops class, and field trips are led by experts in their chosen areas of geosciences.

PLATINUM – Your generous support of **\$1500 or more** will provide your company with recognition for two years on the Young Professional Field Trip (YPFT) (including guidebooks and other paraphernalia), core workshops, PBS-SEPM monthly luncheon slides, newsletters, website, and new publications.

GOLD – Your generous support of **\$1000** will provide your company with the same level of recognition as above for one year, excluding new publications.

SILVER – Your generous support of **\$700** will provide your company with recognition for one year on the core workshop/one day field trip (including guidebooks), PBS-SEPM monthly luncheon slides, newsletters, and website.

BRONZE – Your generous support of **\$400** will provide your company with recognition for one year on all PBS-SEPM monthly luncheon slides, newsletters, and website.

ALUMINUM – Your generous support of **\$250** will provide your company with recognition for one year on all PBS-SEPM luncheon slides and table tent for one luncheon date.

INDIVIDUAL – Your generous support of **\$50** will provide your business card advertised for one year on the PBS-SEPM website and each newsletter.

PBS– SEPM Sponsorships year: June 2021 to May 2022

If you or your organization would like to support the PBS-SEPM's efforts., then please contact us at

info@pbs-sepm.org or go to our website and click on the sponsorship <https://www.pbs-sepm.org/sponsorship>

PBS-SEPM 2021-2022 Board Members



Daniel Scott
President
dscott@sm-energy.com



David Shoore
President-Elect
shoore@gmail.com



Norman E. Wells, Jr.
1st Vice President
nawgeac@gmail.com



Katrina Soundy
2nd Vice President
katrina.soundy@chevron.com



Ashton F. Bruyere
Treasurer
afaulkners@berryll.com



Laura M. Vargas
Secretary
lvargas716@yahoo.com



PBS-SEPM
2900 Front St,
Midland, TX, 79701

Web: www.pbs-sepm.org
Phone: 432-279-1360
Fax: 432-683-8739
Email: info@pbs-sepm.org

If you are
interested in a
sponsorship
opportunity,
please call
PBS-SEPM for
more details at
(432) 279-
1360 or
e-mail
info@pbs-sepm.org.

Scholarships & Distinguished Lecturer Fund

Robert Read Distinguished Lecturer Fund

- The Robert Read Distinguished Lecturer Fund was founded to honor a bright, young geologist who had been an active member of both PBS-SEPM and WTGS and was tragically killed by a drunk driver. Donations from various members of both societies contributed to a membership donation fund that both encourages our continuing education efforts by helping offset the cost of bringing in a distinguished lecturer, usually in geosciences, but not required. With these funds, we will bring our members and community a distinguished lecturer to present at a dinner event.

Wendell J. Stewart Scholarship Fund

- The Wendell J Stewart fund is named for the famous sequence stratigrapher, was initially funded by the family, and then later through PBS-SEPM members who have contributed over the years. In the past, the scholarship was established to award high school students intending to pursue a college education in the geoscience field (declared major), and had evolved to include college students actively pursuing a geology degree when there were no other qualified candidates. Funding for this scholarship has waxed and waned over the years with the changes of the petroleum industry and because this scholarship was set up in such a manner that only the interest can be used to distribute funds, most scholarships in the last 30 years have been awarded through the PBS-SEPM main budget and not the scholarship fund. As of 2021, a resolution was passed by the executive board that allows funds to be distributed from the scholarship fund.

Sue Tomlinson Reid Scholarship Fund

- The Sue T. Reid Scholarship was ratified June 1, 2021. This scholarship is named in honor of an excellent paleontologist who was a pioneer of women in geosciences. This scholarship will be focused on helping honor Sue's memory by supporting women at the university level who are aiming for careers in Earth Science. Funding for this scholarship will be through contributions from members and sponsors of PBS-SEPM.