



# PBS-SEPM NEWSLETTER



February 2009

## Special points of interest:

- New Hire Field trip  
March 5-8th
- All-Day Core Workshop  
April 25th

## Inside this issue:

2008-09 PBS-SEPM Executive Board & Sponsors 2

February Luncheon Talk — Dr. Merlynd Nestell 3

Core Workshop Registration Form (April 25th) 4

PBS-SEPM Spring 2009 New-Hire Field Trip Registration Form 5

PBS-SEPM Digital Publication Project DVD order form 6

Individual Sponsors of PBS-SEPM 7

## President's Column

I am happy to report that crude oil prices are finally up from the month before! As I write this column, crude oil is holding around \$40/bbl (up from \$35/bbl last month) and undoubtedly poised to spring upward—or at least that is every oilman's hope.

With our last PBS-SEPM luncheon talk for the 2008-2009 year coming in May, it is readily apparent that the term for your Executive Board members is coming to a close. But I assure you that your Executive Board is not slowing down. On the contrary, we are working hard to ensure that the most exciting and impactful educational events are yet to come!

The first of these events is the PBS-SEPM New Hire Field trip scheduled for March 5-8th. It has come together smoothly, but needs just one more thing to make it complete—YOU! This is an excellent interdisciplinary training opportunity led by the esteemed Drs. Bob Trentham and Emily Stoudt. If you have not looked at the Permian

Basin through their eyes, I can say without reservation that you need to. Here is your chance!

On April 25th we are offering a colossal core workshop covering ten different Permian Basin reservoir successions led by nine presenters from the Bureau of Economic Geology. This is a hands-on workshop with the purpose being to take small groups through each reservoir succession in order to learn how to identify key features in the 2100'+ of core being shown. Participants will be exposed to sandstones, shales, carbonates, platform facies, basinal facies, cyclicity, fracturing, karsting, etc. This is a phenomenal collection of cores covering the shallow Yates Formation to the deep Ellenburger Formation and is not to be missed! As this is a hands-on training opportunity requiring small groups, the number of participants is somewhat limited, so please sign up early—and dust off that hand lens!

The PBS-SEPM New Hire / Summer Intern Field trip has been scheduled for June 12-15, 2009. Be sure to mark your calendars! We had to turn people away from this popular educational event last year, so be sure to sign up early. More details to come in future Newsletters.

I am also pleased to report that the resolution for the creation of the **Robert L. Read, Jr., Distinguished Lecture Series** and **Robert L. Read, Jr., Distinguished Lecturer Memorial Fund** has been approved by the Executive Board and is awaiting final approval by the Robert Read, Sr., family. I anticipate including a copy of this exciting new resolution that details this new annual event in the March Newsletter.

I hope to see each of you at our next luncheon meeting on February 17th!

*Cory L. Hoffman, Ph.D., P.G.*  
President PBS-SEPM 2008-2009  
<http://www.pbs-sepm.org>

## Mark Your Calendars!

### FEBRUARY

- 14: Valentine's Day
- 16: President's Day
- 17: **PBS-SEPM Luncheon:** Merlynd Nestell, Ph.D., "Late Middle Permian Biostratigraphy of the NW Apache Mountains, West Texas" (Midland Center; 11:30-1:00 PM)

### MARCH

- 5-8: **PBS-SEPM New Hire Field Trip** (led by Dr. Bob Trentham & Dr. Emily Stoudt, Guadalupe Mtns.)
- 17: **PBS-SEPM Luncheon:** David Sivils, Ph.D., "A Shale's Tale – Exploring for Shale Gas in Far West

*Texas and Why Biostratigraphy Still Matters"* (Midland Center; 11:30-1:00 PM)

### APRIL

- 21: **PBS-SEPM Luncheon**
- 25: **All-Day Core Workshop!** (Steve Ruppel and others from the BEG)

## PBS-SEPM Executive Board (2008-2009)

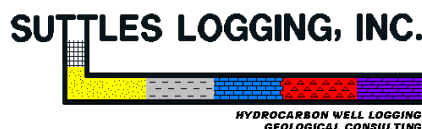
<b>President:</b>	Cory L. Hoffman	<a href="mailto:choffman@stmaryland.com">choffman@stmaryland.com</a>
<b>President Elect:</b>	Fred Behnken	<a href="mailto:Fred_Behnken@kindermorgan.com">Fred_Behnken@kindermorgan.com</a>
<b>First Vice President:</b>	Hollie Lamb	<a href="mailto:h.lamb@eaglerockenergy.com">h.lamb@eaglerockenergy.com</a>
<b>Second Vice President:</b>	Teri McGuigan	<a href="mailto:tmcguigan1@suddenlink.net">tmcguigan1@suddenlink.net</a>
<b>Treasurer:</b>	Deb S. Gann	<a href="mailto:Debbie.Gann@arcadis-us.com">Debbie.Gann@arcadis-us.com</a>
<b>Secretary:</b>	James L. Hawkins	<a href="mailto:jhawkins@midland.oilfield.slb.com">jhawkins@midland.oilfield.slb.com</a>
<b>Executive Director:</b>	Paula Mitchell	<a href="mailto:wtgs@wtgs.org">wtgs@wtgs.org</a>

Do you have an idea for an interesting luncheon talk? Have a core workshop you'd like to present? Have some suggestions on how PBS-SEPM can better serve the geologic community? Just click on the e-mail above and drop us a note—your PBS-SEPM Executive Board would love to hear from you!



## Corporate Sponsorships (2008-2009)

If you are interested in a sponsorship opportunity, please call Paula Mitchell for more details at (432) 683-1573.



*Wagner & Brown, Ltd.*



"The Company That Lives By Its Name!"



**PBS-SEPM is grateful for the generosity of these fine corporate sponsors !**

## PBS-SEPM Luncheon Talk: February 17th

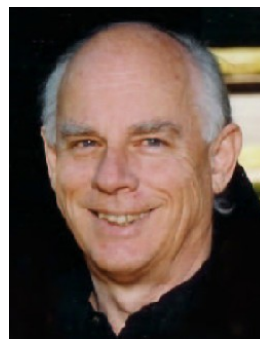
**TITLE:** Late Middle Permian Biostratigraphy of the Northwestern Apache Mountains, West Texas

**SPEAKER:** Merlynd K. Nestell, Ph.D. (Professor, University of Texas at Arlington; Arlington, TX)

### BIOGRAPHY: Merlynd K. Nestell, Ph.D.

Ph.D., 1966, Oregon State University, Corvallis, Oregon

For the past 30 years, Dr. Nestell has held a joint appointment in the Earth and Environmental Sciences and Mathematics departments at The University of Texas at Arlington. His mathematical interest centers on integral equations and their applications and his geological interest has focused primarily on the biostratigraphy of accreted terranes in the Pacific Northwest with emphasis on the distribution of conodonts and fusulinids. For the past 12 years, Dr. Nestell has been working with Dr. Galina Pronina Nestell on Middle and Late Permian foraminifer faunas from the Crimea, Greece, North Caucasus, and West Texas. As a team, they have been working on the integration of the biostratigraphic data concerning the distribution of foraminifers, conodonts, and radiolarians in strata of the Bell Canyon Formation (late Middle Permian) and its stratigraphic equivalents in the Guadalupe and Apache mountains. A monograph on the conodont biostratigraphy of the Lower Permian of Kansas with Darwin Boardman (Oklahoma State) and Bruce Wardlaw (USGS) (Sequence stratigraphy and conodont taxonomy and biostratigraphy of Late Carboniferous and Early Permian strata in Mid-Continent North America) is in press at the Kansas Geological Survey for publication as Bulletin 255. Many of his former graduate students have worked on stratigraphic problems relating to the Middle-Upper Pennsylvanian and Lower Permian strata in north-central Texas. Currently (2009), Dr. Nestell's students are working on Permian rocks in the Apache Mountains in West Texas and Pennsylvanian (Missourian/Virgilian) rocks in North Central Texas.



***"For the past 12 years, Dr. Nestell... has been working on the integration of the biostratigraphic data concerning the distribution of foraminifers, conodonts, and radiolarians in strata of the Bell Canyon Formation"***



**WHEN:** Tuesday, February 17, 2009

**WHERE:** Midland Center

**TIME:** 11:30-1:00 PM

**NOTE:** At the time of publication, we received word that Dr. Nestell has become ill and may not be able to give his scheduled presentation. PBS-SEPM wishes him a quick recovery and wants to assure our membership that we will have a meeting either way, as an alternate speaker has graciously agreed to step-in if necessary.

*Cory L. Hoffman, Ph.D., P.G.*

President PBS-SEPM 2008-2009

## 2009 PBS-SEPM Core Workshop (April 25th)



# 2009 PBS-SEPM Core Workshop

## Applications of Cores to Permian Basin Reservoir Characterization

Midland, TX April 25, 2009

# REGISTRATION FORM

The Permian Basin Section of SEPM is planning a full day core workshop with 9 presenters and 10 reservoir successions. This event will be hosted in conjunction with the AAPG Southwest Section Meeting, in the Midland Center. A tentative list of cores and presenters is:

- Lower Ordovician (Ellenburger) karst facies: *Bob Loucks*,
- Middle and Upper Paleozoic (Silurian, Permian) karst facies: *Bob Loucks*,
- Characterization of the Barnett Shale, Permian basin: *Walea Ali*,
- Fracture characteristics of the Barnett Shale in the Permian basin: *Julia Gale*,
- Upper Clear Fork/Glorieta Platform Carbonate Systems: *Steve Ruppel*,
- Lower Clear Fork/Wichita/Abo Platform Carbonate Systems: *Steve Ruppel*,
- Wolfcamp platform carbonates: Facies and cyclicity: *Qilong Fu*,
- Proximal and Distal Bone Spring Facies and Architecture: *Seay Nance*,
- Spraberry Proximal slope/basin system: *Scott Hamlin*,
- Spraberry Distal basin system: *Scott Hamlin*,
- San Andres Facies and Cyclicity:
- Fullerton field: *Dana Helbert*,
- Yates Fm: proximal to distal trends in facies and mineralogy: *Seay Nance*.

The registration cost will include the full day core workshop with the BEG Staff from Austin, lunch at the Petroleum Club, and snacks throughout the day.

***Participation limited to 100 attendees. Don't miss this opportunity – sign up today!!***

**COST (please mark appropriately):** \$175.00 ( ) \$75.00 Full Time Student ( )<sup>†</sup>

**Name:** \_\_\_\_\_

**Company/Affiliation:** \_\_\_\_\_

**Mailing Address:** \_\_\_\_\_

**Business Phone:** \_\_\_\_\_ **Fax:** \_\_\_\_\_

**Email:** \_\_\_\_\_

Payment: check, cash or credit card

( ) I authorize you to charge the above to my:

( ) MasterCard ( ) VISA ( ) American Express Exp. Date: \_\_\_\_\_

**Card number:** \_\_\_\_\_ **Signature:** \_\_\_\_\_

Make checks payable to **PBS-SEPM**.

Credit card payments may be faxed to (432) 686-7827.

Order forms/payment may be mailed to: PBS-SEPM, P.O. Box 1595, Midland, Texas 79702. Phone (432) 683-1573.

<sup>†</sup> Limited number of need-based scholarships available through PBS-SEPM for full time students. Contact Paula Mitchell (683-1573) for details.

## 2009 PBS-SEPM New Hire Field Trip

# 2009 PBS-SEPM New Hire Field Trip (March 5th—8th) REGISTRATION FORM

The Permian Basin Section of SEPM is planning a four-day field trip to the Guadalupe Mountains for engineering, land, and geology new hires in March 2009. This is an exceptional opportunity for companies to expose their interns and new hires to world-class outcrops that are direct analogues to producing fields in the Permian Basin. The trip will be led by Dr. Robert Trentham and Dr. Emily Stoudt from The University of Texas of the Permian Basin, who have a combined 55 years experience in research, exploration, and production in the basin. Morning outcrop studies will cover shelf to basin deposits, and will be supplemented with afternoon exercises on sequence stratigraphy, log correlation, seismic interpretation, and production data analysis. The goal of this field trip is to educate participants in combining outcrop data with industry exploration and production techniques from a multi-disciplinary perspective.

Participants will leave Midland on March 5<sup>th</sup> and will be staying at the Stevens Inn in Carlsbad, NM. Included in the costs: round trip transportation from Midland, three nights lodging, three breakfasts, three lunches, refreshments in the field, guidebook and handouts.

Registration forms will also be available on the PBS-SEPM website ([www.pbs-sepm.org](http://www.pbs-sepm.org)) in January 2009.

*Limited space is available, so the first to register will be given priority!*

**COST (please mark appropriately):**    \$700.00 double ( ☐ )        \$800.00 single ( ☐ )

**Name:** \_\_\_\_\_

**Company/Affiliation:** \_\_\_\_\_

**Mailing Address:** \_\_\_\_\_

**Business Phone:** \_\_\_\_\_ **Fax:** \_\_\_\_\_

**Email:** \_\_\_\_\_

**Roommate:** \_\_\_\_\_

**Non-Smoking** ( ☐ )    **Smoking** ( ☐ )    **Special Dietary Needs:** \_\_\_\_\_

Payment: check, cash or credit card

( ☐ ) I authorize you to charge the above to my:

( ☐ ) MasterCard    ( ☐ ) VISA    ( ☐ ) American Express    Exp. Date: \_\_\_\_\_

**Card number:** \_\_\_\_\_ **Signature:** \_\_\_\_\_

Make checks payable to **PBS-SEPM**.

Credit card orders may be faxed to (432) 686-7827.

Order forms/payment may be mailed to: PBS-SEPM, P.O. Box 1595, Midland, Texas 79702. Phone (432) 683-1573.

## PBS-SEPM Digital Publication Project



### **PBS-SEPM \*DIGITAL\* PUBLICATIONS ORDER FORM**



This is your opportunity to have the entire **PBS-SEPM** publication library (1955 – 2007) at your finger tips. There is a fully searchable Table of Contents—find a topic or author just by typing in the word(s). All publications are in Adobe PDF with all major articles being bookmarked, and all the figures are linked in the text for quick reference. Those areas that are off limits to geologists like the Glass Mountains or Sierra Diablos have been written up in these publications. Numerous out-of-print publications and figures and/or plates not published in the original guidebooks are now available in this library.

This includes all publications, even the special publications and coveted core workshops. Can you imagine the hidden treasures you might find? Here is your chance to uncover them in this special three (3) DVD set. *Buy one or all.*

#### **DVD I - Symposiums & Guidebooks (1955-1989)**

Member- **\$75.00** plus 8.25% tax and \$5.00 shipping and handling

Non-Member- **\$100.00** plus 8.25% tax and \$5.00 shipping and handling

#### **DVD II - Symposiums & Guidebooks (1990-2007)**

Member- **\$75.00** plus 8.25% tax and \$5.00 shipping and handling

Non-Member- **\$100.00** plus 8.25% tax and \$5.00 shipping and handling

#### **DVD III - Core Workshops (82, 83, 85, 98) & Special Publications (A, 88-28, 96-39, 84)**

Member- **\$75.00** plus 8.25% tax and \$5.00 shipping and handling

Non-Member- **\$100.00** plus 8.25% tax and \$5.00 shipping and handling

#### **Entire Set of three DVDs**

**Member Price** **\$200.00** plus 8.25% tax and \$5.00 shipping and handling

**Non-Member Price** **\$250.00** plus 8.25% tax and \$5.00 shipping and handling

**Name:** \_\_\_\_\_ **Company/Affiliation:** \_\_\_\_\_

**Mailing Address:** \_\_\_\_\_

**Business Phone:** \_\_\_\_\_ **Fax:** \_\_\_\_\_ **Email:** \_\_\_\_\_

Payment: check, cash or credit card

( ) I authorize you to charge the above to my:

( ) MasterCard ( ) VISA ( ) American Express Exp. Date: \_\_\_\_\_

**Card number:** \_\_\_\_\_ **Signature:** \_\_\_\_\_

Make checks payable to **PBS-SEPM**.

Please send registration and payment information: PBS-SEPM, P.O. Box 1595, Midland, Texas 79702

For additional information **contact:** PBS-SEPM office (432) 683-1573.





PBS-SEPM  
P.O. Box 1595  
Midland, TX 79702  
Phone: 432-683-1573  
Fax: 432-686-7827  
E-mail: wtgs@wtgs.org

**We're on the Web!**  
**[www.pbs-sepm.org](http://www.pbs-sepm.org)**



**President's Day**

## Society for Sedimentary Geology

**PBS-SEPM is the Permian Basin Section of SEPM—the Society for Sedimentary Geology. However, you do not need to be a SEPM member or a geologist to join PBS-SEPM.**

**Our non-profit society relies upon the efforts of dedicated volunteers to serve the geological community—primarily through educational events. These events include monthly luncheon talks, core workshops, annual field trips, and special geological publications. Additionally, we are involved on the college campuses—reaching out to future earth scientists through scholarships, discounted memberships, and offering full-time geology students the ability to participate in professional-grade field trips at little to no cost.**

**If you would like to join PBS-SEPM, you may visit our website ([www.pbs-sepm.org](http://www.pbs-sepm.org)) to learn more about us, download a membership form, and learn how to get involved.**

## Individual Sponsors of PBS-SEPM (2008-2009)

Individual sponsors are advertised on the PBS-SEPM website and each Newsletter. Cost is \$85/year. If you are interested in an individual sponsorship opportunity, please call Paula Mitchell for more details at (432) 683-1573.



**Tecton Energy, LLC**

**C.D. Fling**  
Vice President

3000 Wilcrest, Suite 300  
Houston, TX 77042  
[www.tectonenergy.com](http://www.tectonenergy.com)  
[cfling@tectonenergy.com](mailto:cfling@tectonenergy.com)

Main: (281) 668-8068  
Direct: (281) 668-8074  
Cell: (918) 645-8287  
Fax: (713) 974-1004

*Teri R. McQuigan*

INDEPENDENT

1504 SEABOARD AVENUE  
MIDLAND, TEXAS 79705

OFFICE PH: (432) 684-9333

CELL PH: (432) 770-7099

E-MAIL: [tmcquigan1@suddenlink.net](mailto:tmcquigan1@suddenlink.net)