

Chisos Mountain Range, April 2021, taken by Hector Martinez

PBS-SEPM NEWSLETTER

May 2021

President's Letter— 2
Continuing
Transitions

Call for 3
Volunteers

PBS-SEPM 4
May
Luncheon & Annual
Meeting, Speaker:
Carol Hill, Title:
MYSTERIES and
CAVES of the GRAND
CANYON”

Membership 5
Reminder—
Please Renew for
2021-2022

Midland Gem & 6
Mineral Society—
Outdoor Market 2021

YPFT 7
Postponed to 2022

Digital & Hard 8
Copy Library
~Publication
Highlight~

9
PBS-SEPM
Publication: V.5
Carbonate Well Log
& Core Data Analysis

Corporate & 10
Individual
Sponsors
We appreciate your
generosity

PBS-SEPM | 1
Sponsorship Tiers
& PBS-SEPM
Executive Board 2020
-2021

About PBS-SEPM | 2
Wendell J. Stewart
Scholarship Fund &
Robert Read Fund



KEY DATES For May 2021

MAY 2021

- **6-9: WTGS 2021 Spring Field Trip**, Old Rocks, New Ways: The Precambrian through Devonian of Far West Texas & New Mexico, Andy Roark, [Register](#)
- **18: PBS-SEPM Luncheon, Bush Convention Center & Virtual**, 11:30am-1pm
- **27: SPWLA-PB Luncheon, Virtual**, 11:45am-1pm, Mayank Malik, Maximizing Value from Mudlogs: Integrated Approach to Determine Net Pay

President's Column

I would like to start this, my final newsletter entry as President, to say "Thank You" to all of the members of PBS-SEPM for your continued support. Without you, there would not BE a Section at all. I would also like to thank this year's Board and Committee Chairs for doubling up when one of our members had a hard time and could not be there to share the load. If not for these hard-working men and women, the Section could not have DONE anything! (Believe me... there was a lot that got done, but more on that later!).

I would also like to thank more than 900 of you following us through LinkedIn or via our email group. Of course, I would love see all of you join PBS-SEPM, and feel it would be well worth your quarter-of-a-Benjamin to do so! Thank each of you who commented, liked, or shared our announcements, including Rebekah Grmela at National SEPM headquarters, and Mella McEwan, Oil and Gas Editor at the Midland Reporter Telegram. Without your help, no one would have KNOWN we were doing anything. Thank you to our venue (the Midland Bush Convention Center), and to our current and original broadcast platforms (GoToMeeting and Zoom, respectively). Without you, no one could have SEEN us do anything, especially when we could not meet in person. Thank you to our luncheon authors and field trip leaders. Without you, no one could have LEARNED anything.

Thank you, also, to our special event and year-long sponsors, especially Beryl Oil and Gas, our Platinum Sponsor this year, and to individuals who donated event tickets, additional cash, supplies, and other items. Without you, we could not have PAID to do anything. Thank you to Midland Energy Library for working with us on office space. Without you, we would have nowhere to BE so we could do things! Finally, on a personal note, I would like to thank my beautiful wife, Christina, for supporting me through all of the late nights, long days, and time-consuming communications associated with changing how we do things at PBS-SEPM, not to mention all of the things related to becoming an independent during this very rough year.

Speaking of rough, it has been quite a doozie this year. We started in the middle of the Covid-19 pandemic, went through negative oil prices for the first time in history, and proceeded through what looks like a slow recovery, in both health-related and economic considerations. However, I am proud of your Board. They pulled it off. We had the normal number of speakers (though Dr. Rebecca Dodge and Sarah Tamarasari did have to move from April and May to June and July, not in that order). Though we were not able to host our second annual Robert L. Reed, Jr. Memorial Distinguished Lecture Series this year, we were able to run a fantastic (but strangely snowy) ROZ Field Trip, along with a Core Workshop in mid-April. Now, we are looking forward to our annual meeting and final luncheon speaker of the year on May 18, with Carol A. Hill (of the PBS-SEPM Delaware Basin book fame) who will talk to us about her two decades (plus) of research in the caves and outcrops of the Grand Canyon, and who will also be autographing her new book (on sale at the meeting), or her Delaware Basin book.

In other words, this year has been a wild ride, but I am thankful for the opportunity to serve you, the geoscience community, and give back a little of what has helped me in my career. Thank you all for the experience! I don't want to do it again, but I wouldn't trade it for the world! I am looking forward to seeing how PBS-SEPM continues to grow and flourish with the next Board, under the leadership of incoming President, Dan Scott.

Best Wishes, and "Thanks" to ALL of you!

Mike Raines

PBS-SEPM President 2020-2021





Volunteer with PBS-SEPM!



If you are interested in volunteering with PBS-SEPM,
below are the Board Positions and Committees

Board Positions

President-Elect
1st Vice President
2nd Vice President
Treasurer
Secretary

Committees

Nominating
Honorary Life
Stratigraphic
Scholarship
Core Location
Dedicated Service Award
Distinguished Lecturer Series

Webmaster
Publicity
One Day Field Trip Young
Professionals Field Trip
Lunch Arrangements
Luncheon Program
Speaker Award
Publications

Please email us at info@pbs-sepm.org to get more details about the position
or committee.

PBS-SEPM Luncheon Talk & Annual Meeting– May 18, 2021

Carol Hill

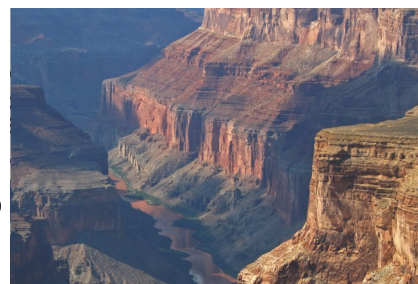
**Adjunct Professor of Earth & Planetary Sciences
at the University of New Mexico**

“MYSTERIES and CAVES of the GRAND CANYON”

Tuesday, May 18, 2021 - [Bush Conventional Center & Virtual](#), 11:30 a.m.
~Will be available virtually through [GoToMeeting](#).~

Abstract

There are three profound mysteries involving the origin of Grand Canyon: (1) How old is Grand Canyon – is it old (~85 Ma) or young (~6 Ma)?; (2) How did the Colorado River cross the topographic high of the Kaibab arch – water cannot flow uphill?; and (3) How could the Colorado River have become “lost” through Glen Canyon and Grand Canyon – there is no trace of it from the Utah-Colorado border to the mouth of the canyon from ca. 11 Ma to 5.5 Ma. This is the story of our 20+ year Grand Canyon project that has tried to solve these three mysteries from our knowledge of caves and karst. It starts from the time of writing my Carlsbad Cavern book (1986) and my Geology of Delaware Basin book (1996), and it continues to the present. It focuses on Grand Canyon caves, and you will see lots of beautiful Grand Canyon and Grand Canyon cave photos as I tell this story.



Biography

Carol Hill is a graduate of the University of New Mexico and is now an Adjunct Professor in the Earth and Planetary Sciences and Continuing Ed Departments. Her main research areas have been the Guadalupe Mountains of New Mexico and the Grand Canyon of Arizona. One of her specialties is caves and karst, and she is the author of the books *Cave Minerals of the World* and *Geology of Carlsbad Cavern*. She has also published the book *Geology of the Delaware Basin: Guadalupe Mountains, Apache Mountains, and Glass Mountains* with the SEPM-PBS on the regional geology of the area, tying in the hypogene origin of Guadalupe caves with the oil and gas fields of the Delaware Basin. She has worked in the Grand Canyon for the last 23 years and is the author of the all-color book *Grand Canyon: Monument to an Ancient Earth* and also of many published papers on the geology and karst hydrology of the Grand Canyon, including those in *Science* and *Earth-Science Reviews* (Elsevier). She has been featured on NOVA and National Geographic TV for her work in Carlsbad Cavern and Grand Canyon.



Renew Your PBS-SEPM Membership!

Purchase your 2021-2022 Annual Dues Now

- *Help provide Geoscience Scholarships*
- *Annual YP Field Trip led by discipline leaders*
- *Professional Field Trips led by topical experts*
- *Monthly Technical Luncheon series*
- *Annual Core Workshops*
- *Networking Opportunities*
- *Special member pricing on merchandise*
- *Member discounts on Events*

Please visit our website, www.pbs-sepm.org, to find our membership form, or reach out via email to info@pbs-sepm.org to speak to a board member. Pay by check made out to PBS-SEPM and send to our physical address – 2900 West Front St, Midland, Texas 70701 – call (432) 279-1360 to make a credit card payment – or pay online via the website.



Midland Gem and Mineral Society's Outdoor Market 2021 Geodes, Jewelry, Rocks and More!

May 22nd, 9:00 a.m.-4:00 p.m.

602 S. Main St.



Geodes will be cut on site. Vendors will be selling a wide variety of items including beautiful silver and turquoise jewelry, chain maille, wire wrapped gemstones, fossils, polymer clay, macrame, tie-dye, and more!

email: mgmstx@gmail.com
www.midlandgemandmineral.org
Facebook: Midland Gem & Mineral Society





PBS-SEPM
Young Professional & Intern Field Trip
Save the Date
June 4th - 6th, 2021



Designed for Engineers, Geologists, and Landmen

A three day long multi-disciplined field trip in the **Guadalupe Mountains** for geology, engineering and land young professionals, interns, and new hires.

The intention is to educate participants in combining outcrop data with industry exploration and production techniques in a multi-disciplined environment

**POSTPONED TO
2022**

Participants will leave Midland, TX on Friday, June 4, and travel to Carlsbad, NM, where they will stay at the Stevens Inn for both Friday and Saturday night. In the evening of Sunday, June 6, all will return to Midland, TX.

~More information to come as well as our registration flyer. Also, reach out to [Robert Campbell](#) for questions.~



PBS-SEPM Publications



PBS-SEPM PUBLICATION HIGHLIGHT

“Paleokarst, Karst-Related Diagenesis, Reservoir Development, & Exploration Concepts: Examples from the Paleozoic Section of the Southern Mid-Continent”

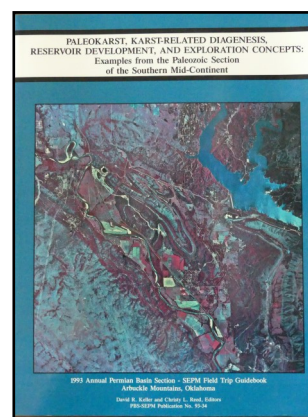
93-34

\$13.13 Members \$17.50 Non-Members



Section I: Field Trip Road Logs - Days 1 and 2

Section II: Technical Papers covering the Arbuckle Group, the Knox Cyclic Carbonates, and the Woodford Shale in the South-western United States. Authors include: James Wilson, Robert Lindsay, Kathy Koskelin, Isabel Montanez, Ann Stefani, Suzan Siy, James Stitt, and James Loch.



Entire PBS-SEPM publication library (1955 – 2007)

There is a fully searchable Table of Contents—find a topic or author just by typing in the word(s). All publications are in Adobe PDF with all major articles being bookmarked, and all the figures are linked in the text for quick reference. Those areas that are off limits to geologists like the Glass Mountains or Sierra Diablos have been written up in these publications. Numerous out-of-print publications and figures and/or plates not published in the original guidebooks are now available in this library.

DVD I - Symposiums & Guidebooks (1955-1989)

Member- \$125.00 plus 8.25% tax and \$5.00 shipping and handling
Non-Member- \$150.00 plus 8.25% tax and \$5.00 shipping and handling

DVD II - Symposiums & Guidebooks (1990-2007)

Member- \$125.00 plus 8.25% tax and \$5.00 shipping and handling
Non-Member- \$150.00 plus 8.25% tax and \$5.00 shipping and handling

DVD III - Core Workshops (82, 83, 85, 98) & Special Publications (A, 88-28, 96-39, 84)

Member- \$125.00 plus 8.25% tax and \$5.00 shipping and handling
Non-Member- \$150.00 plus 8.25% tax and \$5.00 shipping and handling

Entire Set of three DVDs

Member Price \$275.00 plus 8.25% tax and \$5.00 shipping and handling
Non-Member Price \$300.00 plus 8.25% tax and \$5.00 shipping and handling

Payment: check, cash or online with credit card

**Make checks payable to PBS-SEPM & send order form to: PBS-SEPM, 2900 Front St, Midland, TX, 79701
To purchase online, click [HERE](#) and pay with credit card**

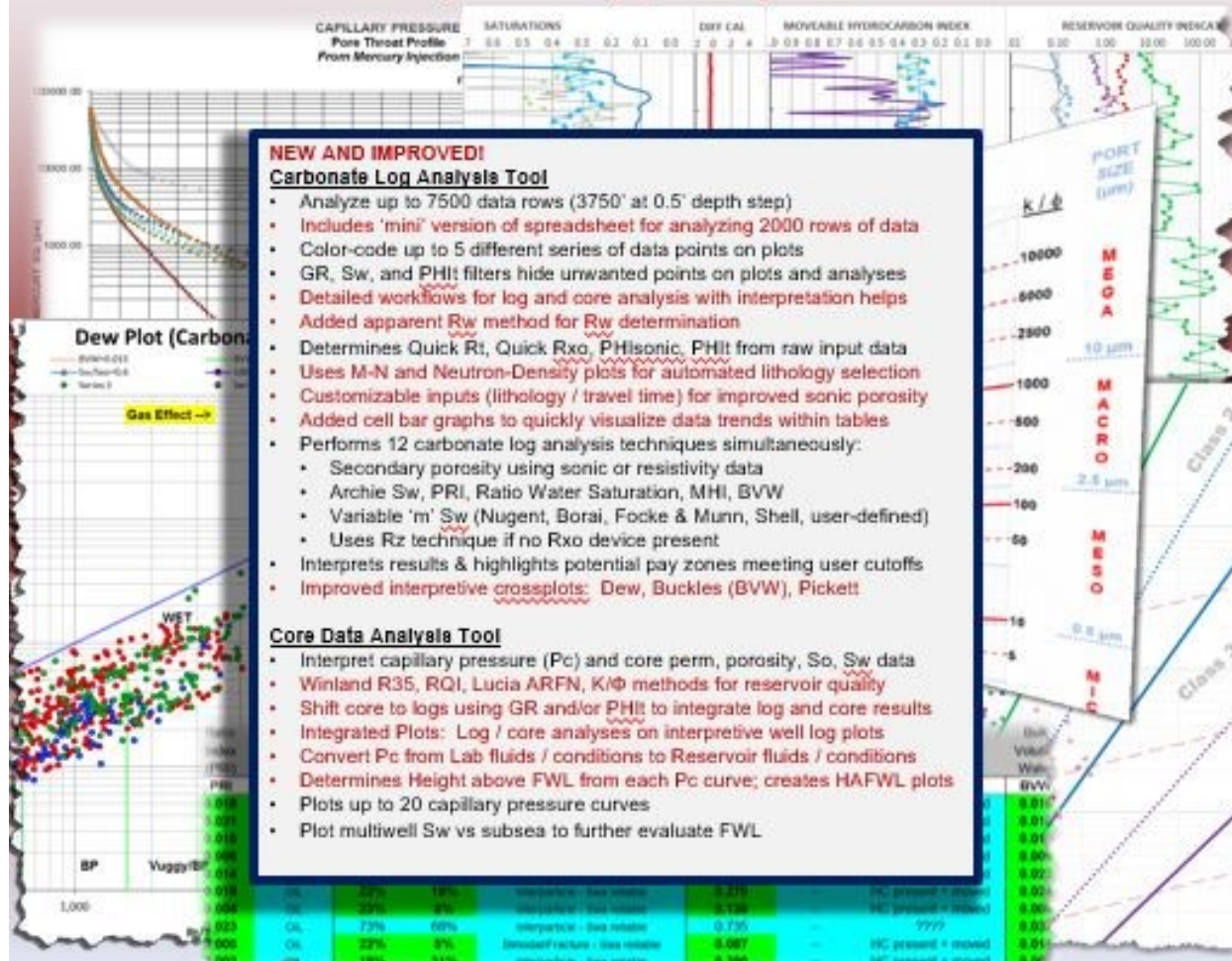
For additional information contact: PBS-SEPM office (432) 279-1360 or info@pbs-sepm.org.



Carbonate Log & Core Analysis Spreadsheet v. 5.0 By Cory L. Hoffman, Ph.D.

Major Upgrade (January 2020)! [Designed for Microsoft Excel 2013]

Carbonate Log analysis draws heavily upon teachings of George Asquith
Core Data analysis draws heavily upon teachings of Dan Hartmann



We would like to thank, [Fox Pest Control](#), a local Midland-Odessa Company, who have decided to sponsor with PBS-SEPM. They like to sponsor local organizations that are making a difference in their service area.

FOX
PEST CONTROL

Corporate Sponsorships (2020-2021) - PBS-SEPM is grateful for the generosity of these fine corporate sponsors !

Platinum Sponsor



Individual Sponsors of PBS-SEPM (2020-2021)

***Your Business Card
Could be here!***

Individual sponsors are advertised on the PBS-SEPM website and each newsletter. Cost is \$50/year. If you are interested in a sponsorship opportunity, please call PBS-SEPM for more details at (432) 279-1360 or email info@pbs-sepm.org.

Your card will be in every newsletter and on the PBS-SEPM Website for one year from August to May.



MARS EXPLORATION AND ENERGY, LLC

Michael A. Raines, President
CPG #6308, TxBPG #1506

Contract Reservoir Geology Services Mike@MarsExp.com
(432) 934-7202

- Waterflood Studies
- Enhanced Oil Recovery
- Carbon Sequestration
- Conventional Reservoirs
- General Permian Basin

1300 South County Rd 1117
Midland, Texas 79706



**CONTINENTAL
LABORATORIES**

Jimmy Bagley
Business Development Manager

6600 Fairbanks N Houston Rd
Houston, TX 77040
www.continentallabs.com

jbagley@continentallabs.com
operations 800.856.0237
c 832.564.6028



Your
Company
Logo
could be in
our
newsletter
showing
your
support of
PBS-
SEPM.

Your
support
lifts your
corporate
name
within the
Permian
Basin.



Sponsorship Information (2020-2021)

Our non-profit society relies entirely upon the efforts of dedicated volunteers to serve the geological community—primarily through educational events. The PBS-SEPM hosts luncheon lectures, core workshops and field trips that are led by experts in their chosen areas of the geosciences. If you would like to sponsor the PBS-SEPM in anyway, we have various levels of commitment you can choose from.

Platinum: \$1500+: Company Logo for 2 years on YPFT field trip, core workshops, luncheon slides, newsletters, website, or new publications (from date of donation)

Gold: \$1000: Company logo for 1 year on the YPFT field trip (which includes guidebooks and other paraphernalia-stickers, pens/pencils, rite in the rain books), luncheon slides, newsletter, and website

Silver: \$700: Logo on the core workshop / one day field trip (which includes guidebooks), luncheon slides, newsletter, and website

Bronze: \$400: Will get their logo on all PBS-SEPM luncheons, newsletters, and the website.

Aluminum: \$250: Will get logo on all luncheons slides, and table tent for one luncheon date.

If you are interested in a sponsorship opportunity, please call PBS-SEPM for more details at (432) 279-1360 or e-mail info@pbs-sepm.org.

PBS-SEPM Executive Board (2020-2021)

President:	Mike Raines	raines.ma@gmail.com
President-Elect:	Daniel Scott	dscott@sm-energy.com
First Vice President:	Jessica Pontiff	jpontiff@concho.com
Second Vice President:	Norman Wells Jr.	nwellsjr@mcclureoil.com
Treasurer:	Ashton Faulkner Bruyere	afaulkner@beryloil.com
Secretary:	Alexis Iwasiw	alexis.iwasiw@outlook.com
Previous President:	Sandra Elliott	sdelliott1234@gmail.com
YPFT Chairman	Robert Campbell	nebularc@yahoo.com
Luncheon Chairman	OPEN POSITION	
Webmaster	Frank Fullbright	fafullbright@paalp.com



PBS-SEPM
2900 Front St,
Midland, TX, 79701

Web: www.pbs-sepm.org
Phone: 432-279-1360
Fax: 432-683-8739
Email: info@pbs-sepm.org

If you are interested in a sponsorship opportunity, please call PBS-SEPM for more details at (432) 279-1360 or e-mail info@pbs-sepm.org.

Do you have an idea for an interesting luncheon talk? Have a core workshop you'd like to present? Have some suggestions on how PBS-SEPM can better serve the geologic community? Send us an e-mail to share your idea, your PBS-SEPM Executive Board wants to hear from you!

PBS-SEPM is the Permian Basin Section of SEPM—the Society for Sedimentary Geology. However, you do not need to be a SEPM member or a geologist to join PBS-SEPM.

PBS-SEPM prides itself on its success in providing high caliber speakers as well as exceptional core workshops and field trips. PBS-SEPM also provides scholarships to graduating high school students in western Texas and New Mexico. These scholarships are on occasion, offered to college students that have declared their desire to pursue a degree in the geosciences. Through continued support from the industry, PBS-SEPM can continue to provide excellent educational opportunities for the oil and gas industry.

If you would like to join PBS-SEPM, you may visit our website to learn more about us, download a membership form, and learn how to get involved.

Scholarship and Distinguished Speaker Events (2020-2021)

Wendell J. Stewart Fund: so named for the famous sequence stratigrapher, was initially funded by the family, and then later through PBS-SEPM members who have contributed over the years. In the past, the scholarship was established to award high school students intending to pursue a college education in the geoscience field (declared major), and had evolved to include college students actively pursuing a geology degree when there were no other qualified candidates. Funding for this scholarship has waxed and waned over the years with the changes of the petroleum industry and because this scholarship is set up in such a manner that only the interest can be used to distribute funds, most scholarships in the last 30 years have been awarded through the PBS-SEPM main budget and not the scholarship fund.

Robert Read Distinguished Lecturer Fund: was founded to honor a bright, young geologist who had been an active member of both PBS-SEPM and WTGS and was tragically killed by a drunk driver. Donations from various members of both societies contributed to a membership donation fund that both encourages our continuing education efforts by helping offset the cost of bringing in a distinguished lecturer, usually in geosciences, but not required.