

PBS-SEPM NEWSLETTER



www.pbs-sepm.org

June 2008

President's Column

Reflections

This was an incredible year, and I would like to thank everyone that supported Permian Basin Section -SEPM. It is time to pass the torch to the next board. My father always told me to "leave whatever you do in better shape than when you receive it." I feel very good about the condition of the PBS-SEPM. We owe much to Paula Mitchell, the Executive Director and Pat Blackwell, office assistant. They are the glue that binds our great society together. We can thank the 2006-07 board and those before for giving us a great foundation from which to build.

This board accomplished a number of "Firsts". It included increasing membership to 276 (up from 265 in 2006-07). We had the first annual PBS-SEPM Calendar--way to go, Gilbert Barragan. We will have the first Summer Intern/New Hire Field Trip in June to help promote the practical side and enjoyment of the petroleum industry--thanks to the dedicated efforts of Teri McGuigan, Rachel Aisner, and Deb Gann. With the generous donations from corporate sponsors, the calendar sales and some special donations, PBS-SEPM was able to support six college students on the annual field trip. Something very dear and valuable to me and, I believe, to the industry, was getting all the PBS-SEPM publications into an electronic format. As a bonus we now have a searchable comprehensive Table of Contents for the entire 1955-2007 library. Gilbert redesigned the Logo with a more modern look to it as seen in the upper right hand corner of this page. Wendy Savage has redesigned our webpage with a user-friendly look and feel. The society finished the year financially in a strong position allowing it to move into the future with a

renewed vigor and strength. We would like to thank the board of WTGS that allows us to share the office and bridges those times when PBS-SEPM needs assistance. There is a renewed spirit of cooperation between our societies that will allow them to better serve our geological community- YOU.

No society achieves great things without the dedicated effort of its board members, committee chairpersons, and the willing participation of the membership.

Thank you one and all. Get involved if you are not and keep involved if you are.

Best Wishes to all as we begin a new year.

(Of course \$135/oil helps-- I think?)

David J. Entzminger

PBS-SEPM Luncheon Schedule

No Meetings in June, July or August

Updates can be found online at: www.pbs-sepm.org

Mark your Calendars

JUNE

June 10: WTGS- *When Good Data Turns Bad*, Robert White, Whitestar Corporation

June 11: PETRA Users Group, PPDC Downtown Midland, *Greg Hinterlong*

June 12- 15: PBS-SEPM Intern & New Hire Field Trip; led by *Dr. Bob Trentham & Dr. Emily Stoudt*

June 16: PBS-SEPM Board Meeting (last year and new board members)

JULY

July 26: WTGS Family Picnic Ulmer Park 4-8pm

AUGUST

August 12: WTGS- Luncheon Speaker- TBA

August 22-23: WTGS-PBGS 15th Annual Invitational Skeet Shoot

Are you a PBS-SEPM member?

Applications on the website: www.pbs-sepm.org

PBS-SEPM- 2008-09 Board

Congratulations to the recently elected 2008-09 PBS-SEPM Board.

PRESIDENT

Cory Hoffman St Mary Land & Exploration Company

PRESIDENT ELECT

Fred H. Behnken Kinder Morgan Production Company, L.P.

1ST VICE PRESIDENT

Hollie Lamb Stanolind Oil and Gas Corp.

2ND VICE PRESIDENT

Terri McGuigan Independent

TREASURER

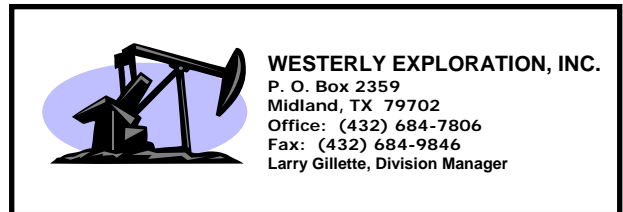
Debrah S. Gann ARCADIS US, Inc.

SECRETARY

James L. Hawkins Schlumberger.

2007-08 Corporate Sponsorships

If you are interested in a sponsorship opportunity, please call Paula Mitchell for more details at (432) 683-1573



Former Rotary Laboratory, Inc.

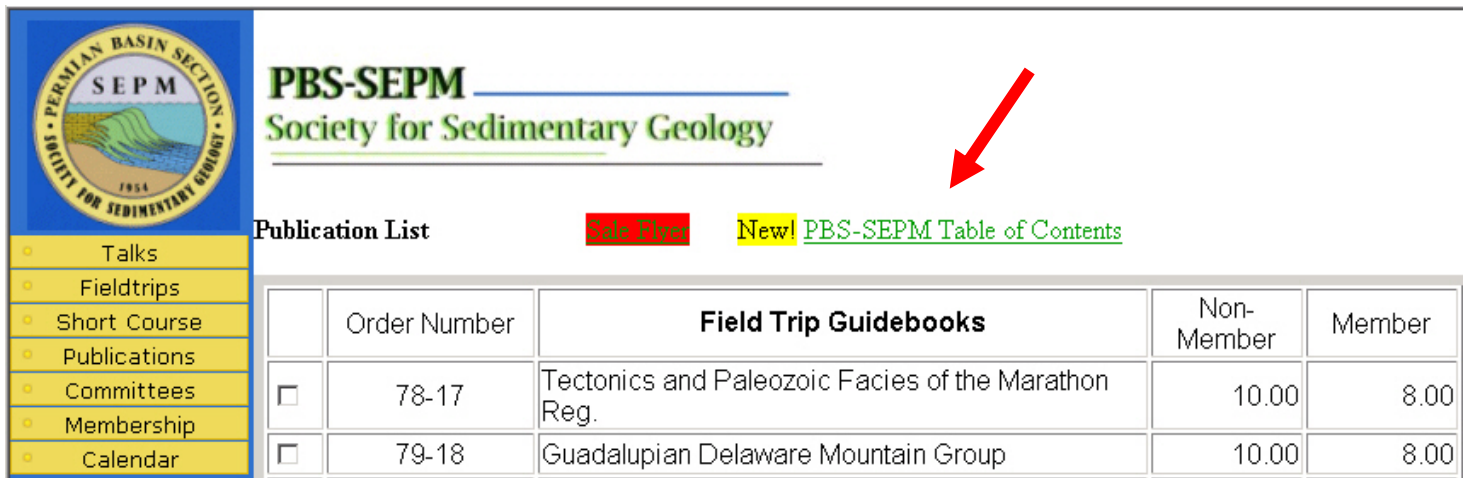


HALLIBURTON

We would like to THANK our Corporate Sponsors for their support

PBS-SEPM DIGITAL PUBLICATION PROJECT

Check this out-----www.pbs-sepm.org/publications. You can now go to the PBS-SEPM website and search all their publications' tables of contents for topics, articles, authors. Just click on the PBS-SEPM Table of Contents- an Adobe PDF will be launched. You can use the Bookmarks on the left side or use the search function. Yes, you might find that little bit of information that will make your next exploration or development project a success. Limited time offer--- it will be part of the new digital publication package coming out in April.



The screenshot shows the PBS-SEPM website interface. On the left is a vertical navigation menu with yellow buttons for 'Talks', 'Fieldtrips', 'Short Course', 'Publications', 'Committees', 'Membership', and 'Calendar'. The main header features the PBS-SEPM logo and the text 'PBS-SEPM Society for Sedimentary Geology'. Below the header, there are two links: 'Sale River' (highlighted in red) and 'New! PBS-SEPM Table of Contents' (highlighted in yellow). A red arrow points to the 'New!' link. Below these links is a table titled 'Field Trip Guidebooks' with columns for 'Order Number', 'Field Trip Guidebooks', 'Non-Member', and 'Member'. The table contains two entries, each with a checkbox in the first column.

	Order Number	Field Trip Guidebooks	Non-Member	Member
<input type="checkbox"/>	78-17	Tectonics and Paleozoic Facies of the Marathon Reg.	10.00	8.00
<input type="checkbox"/>	79-18	Guadalupian Delaware Mountain Group	10.00	8.00

The compilation of all the Tables of Contents is a quick reference to all PBS-SEPM publications. Since this file has been OCR, one can use **word searches** to find a publication, article, subject or author. On the **Toolbar**, you will find a binocular “search”, click on it and you will get the search menu (Figure 1, p. 7). By simply typing in the information you would like to find, and clicking the **search key**, you will be shown to all the places that have that word or words (Figure 2, p. 7).

All publications have been **Bookmarked** and put into three categories: Publications, Special Publications or Core Workshops (Figure 3, p. 7). By simply clicking on any of these categories, they will expand to the publication list. “Click” on the desired publication and you will be taken directly to that page. All publications have a “Table of Contents” associated with them and by going to the next page(s), you will be able to view all the articles in that publication. You can also get to any of the “Tables of Contents” from the bookmarks by expanding any of the individual publications and “clicking” on the Table of Contents below the publication of choice.

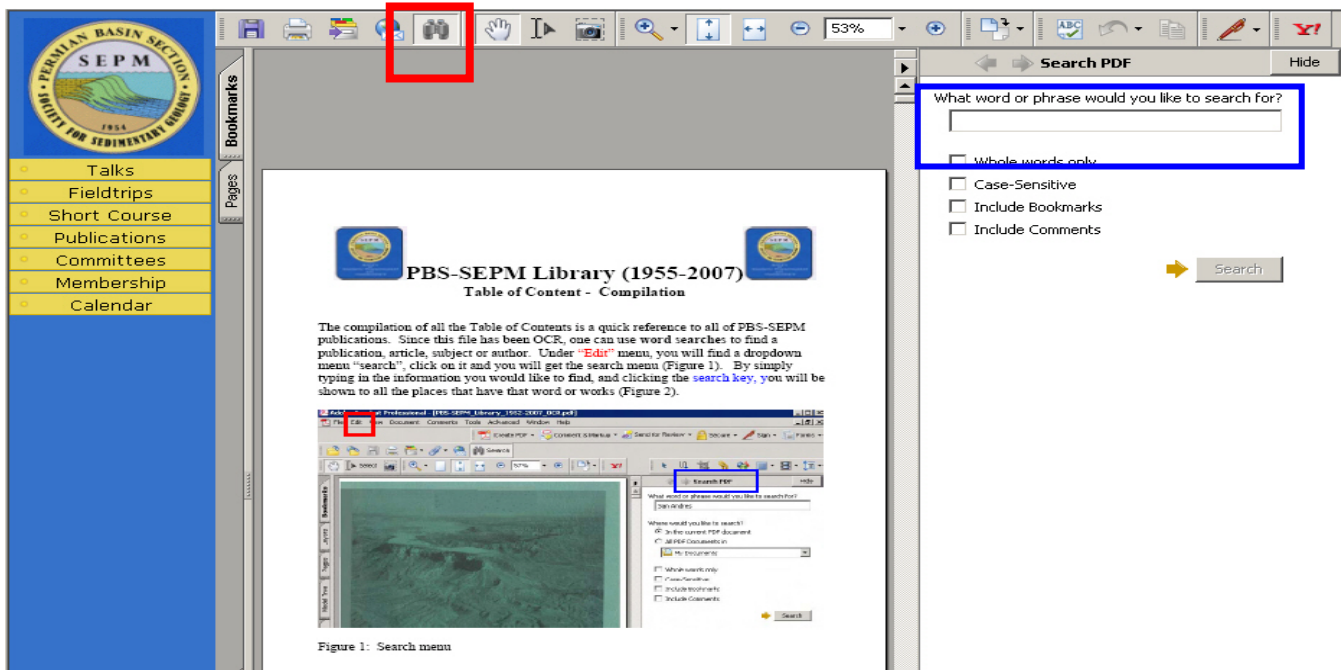


Figure 1: Search menu

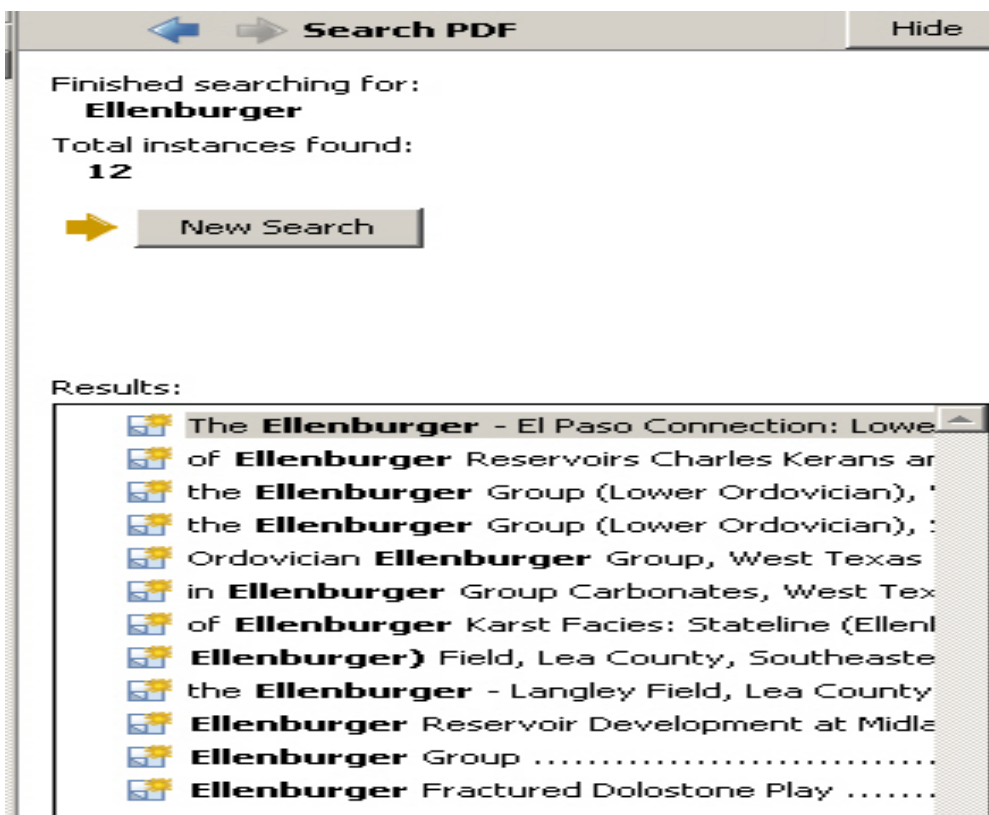


Figure 2: Search retrieval

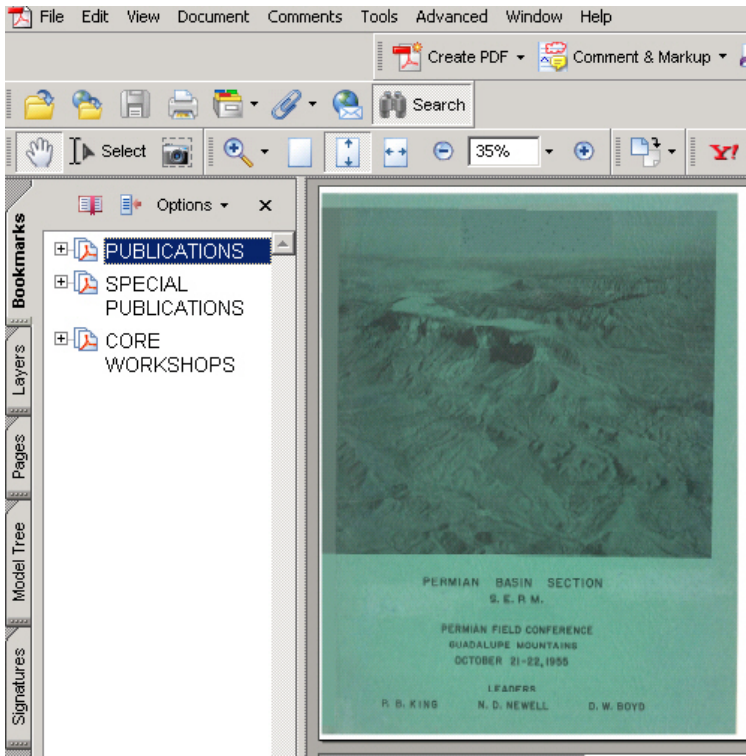


Figure 3: Bookmarks



PBS-SEPM Publications

This is your opportunity to have the entire PBS-SEPM publication library (1955 – 2007) at your finger tips. There is a fully searchable Table of Contents—find a topic or author just by typing in the word(s). All publications are in Adobe PDF with all major articles being bookmarked, and all the figures are linked in the text for quick reference. Those areas that are off limits to geologists like the Glass Mountains or Sierra Diablos have been written up in these publications. Numerous out-of-print publications and figures and/or plates not published in the original guidebooks are now available in this library.

This includes all publications, even the special publications and coveted core workshops. Can you imagine the hidden treasures you might find? Here is your chance to uncover them in this special three (3) DVD set. *Buy one or all.*

DVD I - Symposiums & Guidebooks (1955-1989)

Member- **\$75.00** plus 8.25% tax and \$5.00 shipping and handling

Non-Member- **\$100.00** plus 8.25% tax and \$5.00 shipping and handling

DVD II - Symposiums & Guidebooks (1990-2007)

Member- **\$75.00** plus 8.25% tax and \$5.00 shipping and handling

Non-Member- **\$100.00** plus 8.25% tax and \$5.00 shipping and handling

DVD III - Core Workshops (82, 83, 85, 98) & Special Publications (A, 88-28, 96-39, 84)

Member- **\$75.00** plus 8.25% tax and \$5.00 shipping and handling

Non-Member- **\$100.00** plus 8.25% tax and \$5.00 shipping and handling

Entire Set of three DVDs

Member Price **\$200.00** plus 8.25% tax and \$5.00 shipping and handling

Non-Member Price **\$250.00** plus 8.25% tax and \$5.00 shipping and handling

Name: _____ **Company/Affiliation:** _____

Mailing Address: _____

Business Phone: _____ **Fax:** _____ **Email:** _____

Payment: check, cash or credit card

() I authorize you to charge the above to my:

() MasterCard () VISA () American Express Exp. Date: _____

Card number: _____ **Signature:** _____

Make checks payable to **PBS-SEPM**.

Please send registration and payment information: PBS-SEPM, P.O. Box 1595, Midland, Texas 79702

For additional information **contact:** PBS-SEPM office (432) 683-1573

Registration

2008 PBS-SEPM Summer Intern / New Hire Field Trip

June 12th – 15th, 2008

The Permian Basin Section of SEPM is planning a **four-day** field trip to the Guadalupe Mountains for engineering, land, and geology interns and new hires in June, 2008. This is an exceptional opportunity for companies to expose their interns and new hires to world-class outcrops that are direct analogues to producing fields in the Permian Basin. The trip will be led by Dr. Robert Trentham and Dr. Emily Stoudt from The University of Texas of the Permian Basin, who have a combined 55 years experience in research, exploration, and production in the basin. Morning outcrop studies will cover shelf to basin deposits, and will be supplemented with afternoon exercises on sequence stratigraphy, log correlation, seismic interpretation, and production data analysis. The goal of this field trip is to educate participants in combining outcrop data with industry exploration and production techniques from a multidisciplinary perspective. Participants will leave Midland on June 12th and will be staying at the Stevens Inn in Carlsbad, NM. Included in the costs: round trip transportation from Midland, three nights lodging, three breakfasts, three lunches, and refreshments in the field, guidebook and handouts. PBS-SEPM is looking for one professional **landman** and one professional **engineer** to participate in the field trip as mentors. Mentors will provide their expertise both in the field and in the classroom and help ensure an integrated learning experience for participants. PBS-SEPM will offer a discounted registration fee for mentors. If you are interested in being a mentor, please contact Rachel Aisner or Teri McGuigan at one of the numbers below. Registration forms will be available on the PBS-SEPM website (www.pbs-sepm.org). Limited space is available, so first to register will be given priority. **Please register by Thursday, May 29th to secure your spot!** Cost (please mark appropriately): **\$650.00 double () \$750.00 single ()**

Please indicate your field of interest: **Engineering () Geology () Land ()**

Name: _____ Company/Affiliation: _____

Mailing Address: _____

Business Phone: _____ Fax: _____

Email Address: _____ Roommate: _____

Non-Smoking () Smoking () Special Dietary Needs: _____

Payment: check, cash or credit card

() I authorize you to charge the above to my: (there is a credit card handling charge)

() MasterCard () VISA () American Express Exp. Date: _____

Card number: _____

Signature: _____

Make checks payable to PBS-SEPM and send payment and registration to: PBS-SEPM, P.O. Box 1595, Midland, Texas 79702. For additional information contact: PBS-SEPM office (432) 683-1573, Teri McGuigan (432) 770-7099 or Rachel Aisner (432) 638-5502.

PBS-SEPM 2008 Summer Intern / New Hire Field Trip

ITINERARY

Thursday, June 12th

9:00 a.m. - Overview at CEED, Midland
Introduction to basic carbonates/clastics and terminology
Permian Basin Geology & Sequence Stratigraphy
Lunch @ CEED
1:00 PM - Drive to Carlsbad

Stops: Basinal Deposit Architecture at Roadside Stop below El Capitan
West Side vista/Salt Flat Graben
Cherry Canyon _ Manzanita Marker
Bone Spring
Brushy Canyon Channel
Shelf to Basin transition
Bell Canyon/ Rader Slide Roadcut
Lamar Basinal Facies
Castile Basin Fill Facies
Evening _ Arrive at Stevens Inn

Friday, June 13th _ Carbonate Ramp

AM - Carbonate Ramp Outcrop Examination (Dark Canyon)
Tepee/pisolite structures
Lunch at the outcrop
PM - Ramp Exercise at Stevens Motel (Algerita)
Evening Upper Guadalupian Shelf and Basin presentation

Saturday, June 14th _ Mixed Carbonates/Sandstones on a Distally Steeped Ramp

AM - Correlation Exercise at Stevens Motel
Visit Outcrop in Last Chance Canyon
- Discuss Correlation
- Integrate with seismic data
Lunch at Sitting Bull Falls
Discuss Queen in Rocky Arroyo
PM - 2-D Sequence Stratigraphy Correlation Exercise

Sunday, June 15th _ Carbonate Rimmed Shelf Environment

AM - Overview of reef and fore reef at McKittrick Canyon
View reef facies at entrance to Walnut Canyon
View shelf crest at _ Hairpin Turn_
Lunch in parking lot
PM - Final Exercise at Stevens Motel (complete data set from a producing field)
Return to Midland _ Dark:30.

ROAD LOG

Thursday, June 12 th

CEED to Kermit to Orla to 62/180 to salt Graben. Salt Graben to Carlsbad.

Along the way: Basinal Deposit Architecture

Roadside Stop below El Capitan

West Side vista/Salt Flat Graben

Cherry Canyon _ Manzanita Marker

Bone Spring

Brushy Canyon Channel

Shelf to Basin transition

Bell Canyon/ Rader Slide Roadcut

Lamar Basinal Facies

Castile Basin Fill Facies

Friday, June 13 th _ Carbonate Ramp

Carlsbad to Dark Canyon

Ramp Outcrop Examination (Dark Canyon)

Tepee/Pisolite structures

Saturday, June 14 th _ Mixed Carbonates/Sandstones on a Distally Steepened Ramp

Carlsbad to Dark Canyon to Last Chance Canyon to Rocky Arroyo to Carlsbad

Outcrop in Last Chance Canyon

Lunch at Sitting Bull Falls

Queen in Rocky Arroyo

Sunday, June 15 th _ Carbonate Rimmed Shelf Environment

Carlsbad to McKittrick Canyon to Walnut Canyon/Carlsbad Caverns to Carlsbad

Overview of reef and fore reef at McKittrick Canyon

View reef facies at entrance to Walnut Canyon

View shelf crest at _ Hairpin Turn_

Lunch in parking lot

Carlsbad to Orla to Midland.

Spring Field Trip



Picture courtesy- Jesse White

Special thanks to Dr. Charlie Kerans, Dr. Xavier Janson, and Dr. Ted Playton for leading this fantastic trip. Mike Senich did a great job of coordinating and organizing. We appreciate our trip sponsors [Suttles Logging](#), [Western Geophysical](#) and [Dawson Geophysical](#).

We are grateful to our special contributors that made it possible to allow six geologic college students to attend the field trip.

“The Rocks - Rule”