

Permian Basin & Slope - SEPM Strata

PBS-SEPM NEWSLETTER

April 2022

Event—Young Professional and Intern field trip 2

Call for Volunteers 3
Need new board members for 2022

PBS-SEPM Luncheon— Speaker: Eric J. Peavey, 4
“Integrated Sequence Stratigraphy, FTIR and ED-XRF Geochemical Characterization of Wolfcamp A- and Wolfcamp B-Equivalent Outcrop Facies in the Glass Mountains (Skinner Ranch Fm, Lenox Hills Fm), West Texas, USA

PBS-SEPM April Luncheon, 5
***Location Change

PBS-SEPM Luncheon— May 6
Speaker: Jeff A. Smith, “The Way We Were”

Membership Renewal 7

Donate to our many Scholarships 8

Wendell J. Stewart Scholarship Application 9

PBS-SEPM Merchandise— 10
⇨ **Free sticker** ⇨

Digital & Hard Copy Library Publication Highlight— 11

PBS-SEPM Publication: V.5 12
Carbonate Well Log & Core Data Analysis

PBS-SEPM Sponsorship Tiers & PBS-SEPM Executive Board 2021-2022 13

About PBS-SEPM 14
Wendell J. Stewart Scholarship Fund & Robert Read Fund

Corporate & Individual Sponsors 15
We appreciate your generosity

KEY DATES For April 2022

APRIL 2022

- **12th: WTGS luncheon** 11:30@ Double tree Hilton
- **19th PBS-SEPM luncheon** 11:30 Ranchland Hills Golf Club— Vista room
- **21st : SPE PB** 11:30 am@ Petroleum Club of Midland
- **26th— Rocky Mountain Section** SEPM - 12pm Mountain time*** (free) (click to go to page)



UTPB Geoscience Symposium

Thursday April 28, 2022
8 am-4pm
Engineering Building

SIPES National Meeting

June 13-16, 2022
Parks City, Utah
<https://sipes.org/2022-sipes-convention/>

Check out merchandise to purchase

EVENT

"The goal is to educate participants in combining outcrop data with industry exploration and production techniques in a multi-disciplined environment."



Young Professional and Intern Field Trip



Designed for Engineers, Geologists, and Land Young
Professionals, New Hires, and Interns

June 9-12, 2022
Guadalupe Mountains

Register Now OR RSVP Now, Pay Later

www.pbs-sepm.org/ypift

**Sign up today so you can
hurry up and lock in your spot**



LOOKING FOR BOARD MEMBERS

WHY JOIN?

- Get involved in the community
- Meet others in your field
- Gain new leadership skills
- And much more

Volunteer with PBS-SEPM

If you are interested in volunteering with PBS-SEPM, below are the Board positions and committees;

Board Positions

President-Elect
1st Vice President
2nd Vice President
Treasurer
Secretary

Committees

Nominating	Professional Field trip
Honorary Life	Lunch Arrangements
Stratigraphic	Lunch Program
Scholarship	Speaker Award
Core Location	Publication
Dedicated Service Award	
Distinguished Lecturer Series	
Webmaster	
Publicity	
One day Field trip	

Please email us at info@pbs-sepm.org to get more details about the position or committee



PBS-SEPM Luncheon



**4/19/2022, 11:30 AM, Ranchland Hills
Banquet Room**

\$25 Early Bird Rate, \$30 at the Door or \$10 BYOL/Student or \$5 Virtual
RSVP by 4/15/2021 to info@pbs-sepm.org or online at www.pbs-sepm.org



Integrated Sequence Stratigraphy, FTIR and ED-XRF Geochemical Characterization of Wolfcamp A- and Wolfcamp B-Equivalent Outcrop Facies in the Glass Mountains (Skinner Ranch Fm, Lenox Hills Fm), West Texas, USA

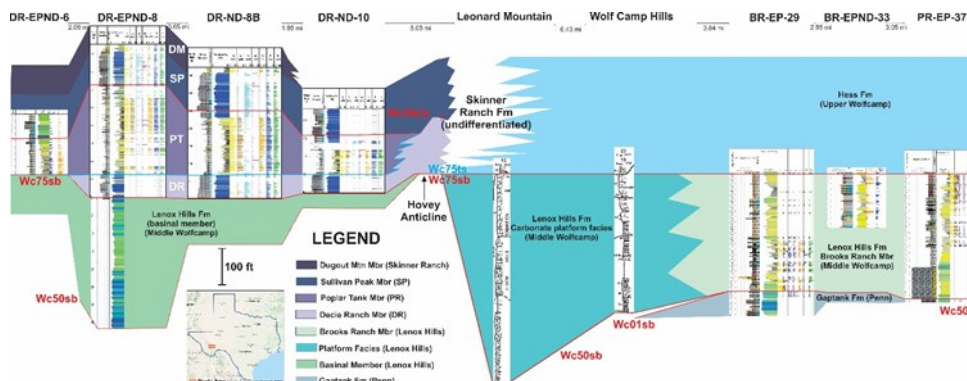
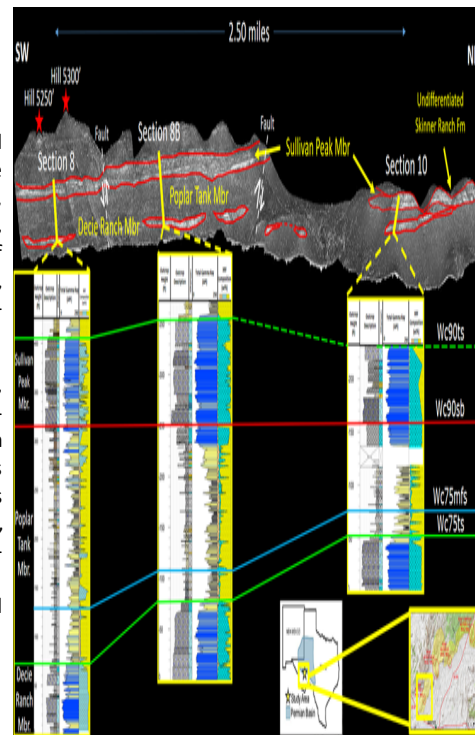
Eric J. Peavey –*Graduate Student at Texas A&M University*

Abstract:

The Glass Mountains comprise the southern part of the Ouachita Fold and Thrust Belt and have Early Permian outcrop exposures that have remained largely untouched by geologists for the past 60+ years. This work brings outcrops of the Lenox Hills Formation (Fm; Middle Wolfcamp, Wolfcamp B-equivalent) and basinal outcrop facies of the Skinner Ranch Fm (Upper Wolfcamp, Wolfcamp A-equivalent) into the 21st century geochemically and petrographically, by integration of Electron Dispersive – X-Ray Fluorescence (ED-XRF), Fourier Transform Infrared (FTIR) Spectroscopy, FTIR Total Organic Carbon (TOC) content, $\delta^{13}\text{C}_{\text{org}}$ isotope geochemical data, and petrographic analysis.

The Lenox Hills Fm has laterally variable facies of primarily slope and proximal affinities, depending on location within the Glass Mountains. Fluvial clastic (high SiO_2 , K_2O , MgO , Zr) to polymictic carbonate conglomerate ranges 0-450' thick at its base and is 146.5' thick at the Lenox Hills Fm type section. Overlying the conglomerate are interbedded limestone, mudstone and sandstone beds of various composition and thickness. The interbedded mudstone, limestone, and sandstone facies have bulk composition ranges of the following: FTIR TOC content of 0.0 – 4.6 wt% (average 0.98 wt%), total FTIR clay content of 1.0 – 72.3 wt% (avg. 25.2 wt%), and locally moderate to severe dolomitization (avg. 17.3 wt % FTIR ankerite) in proximal depositional facies outcropping in the Brooks Ranch Mbr of the Lenox Hills Fm. The intertributary basin facies of the Lenox Hills Fm were not analyzed geochemically, due to weathering and outcrop position (in a valley) in the Lenox Hills.

The basinal, Upper Wolfcamp (Wolfcamp A-equivalent) facies of the Skinner Ranch Fm include the Decie Ranch, Poplar Tank, Sullivan Peak, and Dugout Mountain members, respectively. At its type locality, the Decie Ranch Mbr has a laterally variable, ~45' thick carbonate (Ca, Mg-rich) conglomerate at its base, overlain by ~25' of interbedded mudstone, thin sandstone beds, and calcarenite. The overlying Poplar Tank Mbr, at its type locality, is comprised of mudstone, limestone, and calcarenite ~230' thick, with FTIR TOC content of 0-2.9 wt% (avg. 0.6 wt%), total FTIR clay content of 1.1 – 60.0 wt% (avg. 25.5 wt%) and less dolomitization than Middle Wolfcamp strata (avg. 9.7 wt% FTIR ankerite). The overlying Sullivan Peak Mbr, at its type locality, is comprised of ~85' of interbedded limestone and mudstone, with hybrid clastic/carbonate debris flow facies / conglomerate marking the base of the member and occurring throughout its deposition.



BIOGRAPHY:

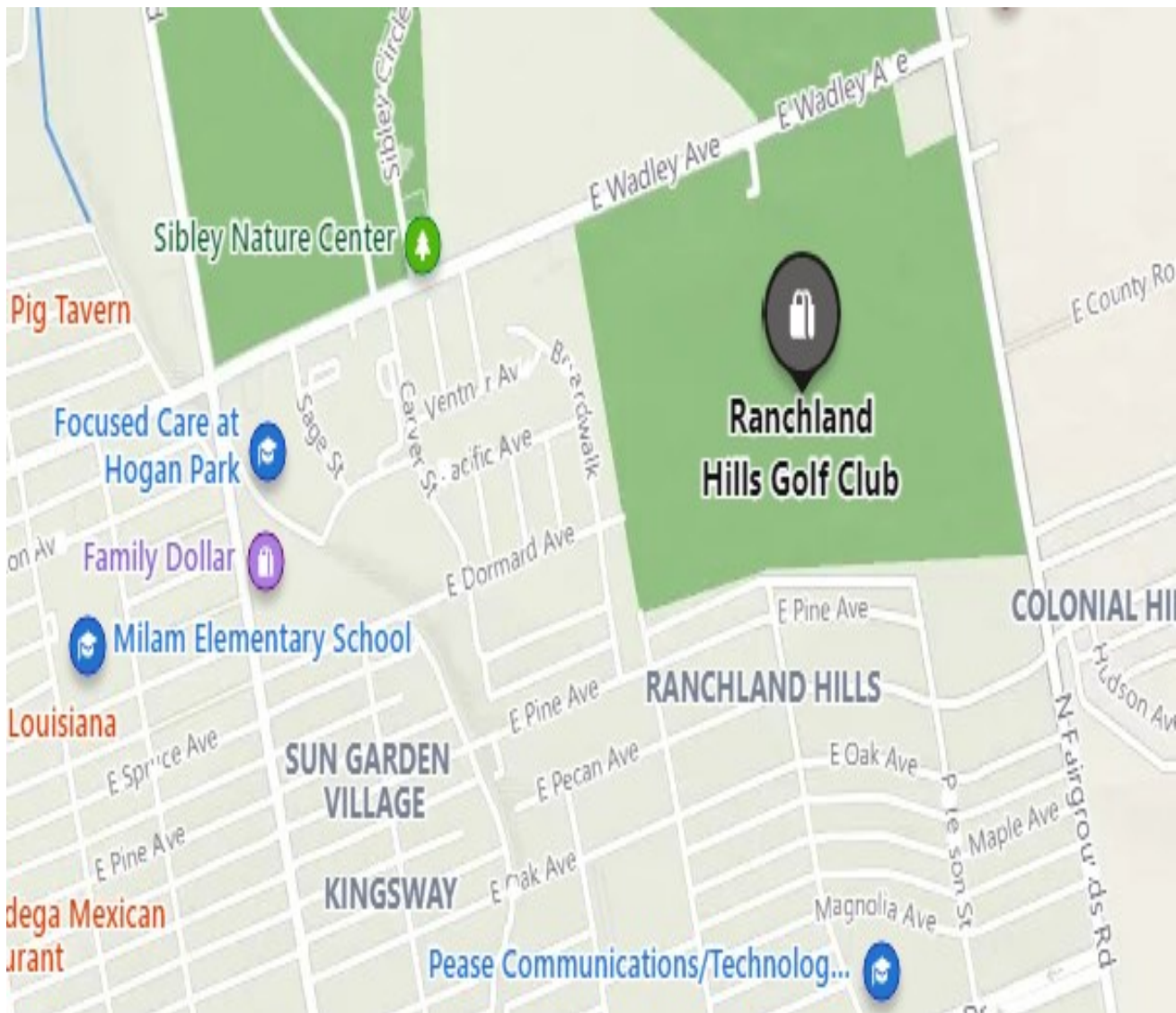
Eric is a 4th year Geology PhD candidate at Texas A&M University, studying the outcrop to subsurface chemostratigraphy of the Wolfcamp A and Wolfcamp B in the Delaware Basin. He earned a B.S. in Earth Science from Southern Connecticut State University in 2013, and an M.S. in Geology from Texas A&M University in 2017. Eric is an active supporter of Texas A&M's Unconventional Reservoirs and Outcrop Characterization (UROC) Consortium. Eric's research interests include multiproxy geoscience data integration, chemostratigraphy, and machine-enhanced stratigraphy.

PBS-SEPM Luncheon— **Location Change**

Please note of the new luncheon location.

Ranchland Hills Golf Club– Vista Room

1600 E Wadley Ave, Midland, TX 79705



Register today

[April Luncheon Meeting | PBS-SEPM](#)

PBS-SEPM Luncheon— April



**May 17, 2022@ 11:30 AM, Ranchland Hills
Banquet Room**

\$25 Early Bird Rate, \$30 at the Door or \$10 BYOL/Student or \$5 Virtual

RSVP by 5/13/2022 to info@pbs-sepm.org or online at www.pbs-sepm.org

Jeff A. Smith – Consultant Geologist

Keynote Talk:

Join us as Jeff takes us on a journey starting at the time when oil prices were in the single digits, we drank Jim Beam at the rig, and the fancy new tool called a calculator had not been invented yet.

As a child growing up in upstate New York, Jeff loved everything about nature and the outdoors. In ninth grade he took an Earth Science class and fell in love with Geology, but in high school he found himself gravitating more towards Chemistry as he felt the job potential would be better. When he went to Union College as a Chemistry major, he quickly became acquainted with the Geology Department because the campus bar and grill, The Rathskeller, was ideally located in the basement of the Geology building. He started using his elective credits to take Geology classes in his Sophomore year and switched his major to Geology in his Junior year. Jeff was a field assistant to Peter J.R. Buttner, a Postdoctoral Fellow doing research in the Catskill Mountains. Peter Buttner told the renowned Gerald M. Friedman, known as one of the founders of modern sedimentology, about Jeff and Dr. Friedman offered him a full scholarship to Rensselaer Polytechnic Institute. In late 1969 Mobil was conducting interviews on campus and Jeff, never having interviewed for a job before, decided to sign up for an interview solely as practice. He was astounded when he ended up landing a job as a Petroleum Geologist in Midland, Texas, which was the only job opening they had in the whole country at the time.

How has the industry evolved over the decades? What things have remained the same? Please join us for a look back with Jeff Smith, as he tells witty and entertaining stories of his career and life experiences as a Petroleum Geologist who has been involved with projects in 24 different states.



BIOGRAPHY: *Jeff A Smith started as a Chemistry major but eventually transferred to a Geology major his Junior year. He graduated from Union College in 1968 with a B.S. in Geology in 1968. Post graduation, Jeff was expecting to get drafted into the Vietnam, but an opportunity to pursue a PhD came to him from Gerald M Friedman, doing so on a fellowship with field work looking at the Catskill Delta Sands. In the midst of his PhD program, Jerry had the opportunity to interview with Mobil, and was hired on in 1970 – completing his thesis and receiving an M.S. in Geology from Rensselaer Polytechnic Institute that same year. Jeff moved from New York to Midland, Texas to begin his career in the oil and gas industry.*

Time to renew your membership

Membership Year June 1 – May 31

Why Join or Sponsor PBS-SEPM?

- Help provide Geoscience scholarships
- YP/I Field Trip led by disciplined professionals
- Professional field trips led by topical experts
- Annual Core Workshops
- Monthly technical luncheon series
- Networking opportunities
- Special member pricing on publications

Only \$25 to join!



- | | |
|--|------------------------------|
| ⇒ Help Provide Geoscience Scholarships | ⇒ Annual core workshops |
| ⇒ Annual YP Field trip led by discipline leaders | ⇒ Networking opportunities |
| ⇒ Monthly technical luncheon series | ⇒ Member discounts on events |
| ⇒ Discounts on publications | |

PBS-SEPM is the Permian Basin Section of SEPM—the Society for Sedimentary Geology.

However, you do not need to be a SEPM member or a geologist to join PBS-SEPM.

PBS-SEPM prides itself on its success in providing high caliber speakers as well as exceptional core workshops and field trips. PBS-SEPM also provides scholarships to graduating high school students in western Texas and New Mexico. These scholarships are on occasion, offered to college students that have declared their desire to pursue a degree in the geosciences. Through continued support from the industry, PBS-SEPM can continue to provide excellent educational opportunities for the oil and gas industry.

If you would like to join PBS-SEPM, you may visit our website to learn more about us, download a membership form, and learn how to get involved.

Visit our website today to join, or sign up at one of our luncheons.

www.pbs.-sepm.org

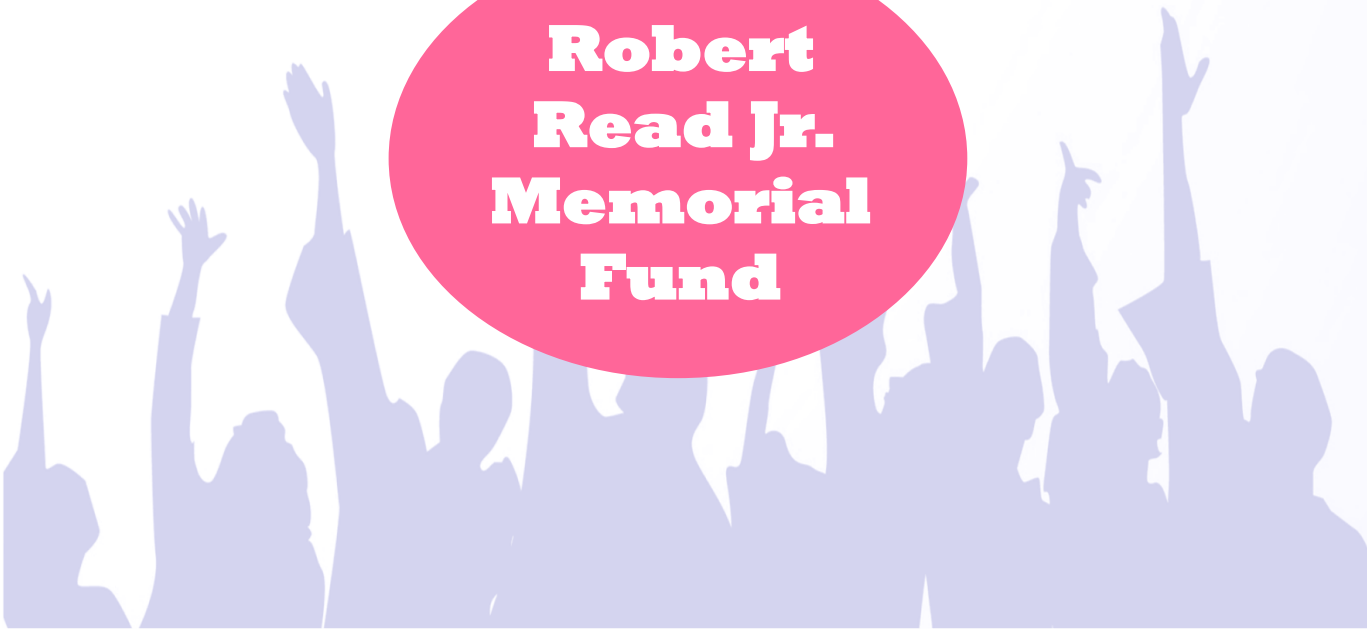
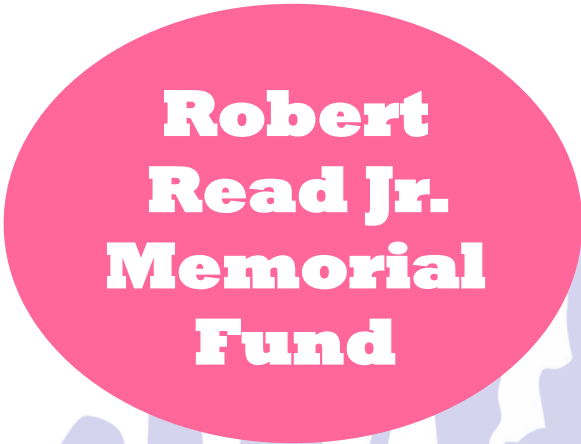
Donate to our many Scholarship funds



**Wendell J
Stewart
Scholarship**



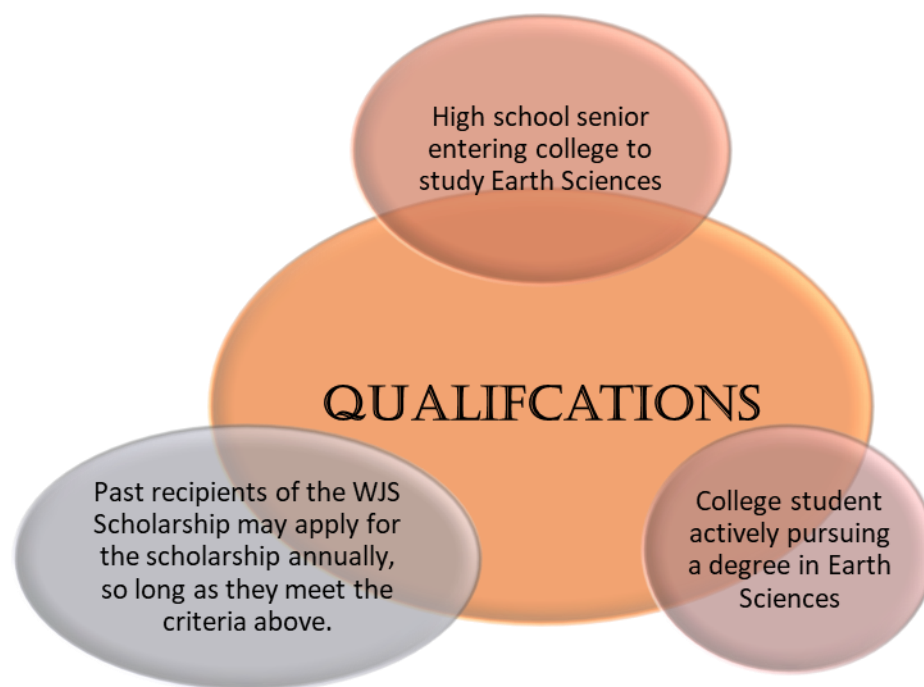
**Sue T. Reid
Scholarship**



**Robert
Read Jr.
Memorial
Fund**

Wendell J. Stewart Scholarship Applications

Application Deadline: April 15, 2022



Submission Guidelines:

Email application and supporting documents to admin@pbs-sepm.org.

- To submit by mail, send application and supporting documents to:
PBS-SEPMScholarship Committee 2900 W. Front. St. Midland, TX 79701
- Letters of recommendation should be mailed or emailed directly from the reference to the Scholarship Committee. At least one reference should be familiar with the student's academic work, and neither reference should be related to the applicant.
- Applications, supporting documents, and letters of recommendation must be emailed or post-marked by the deadline of April 15, 2022.


PBS-SEPM Merchandise



PBS-SEPM Merchandise



MARBLE NOTEBOOK



\$10.83

LEATHER PADFOLIO



\$27.06

TUMBLER



\$16.24


VINYL STICKER



\$2.00

Great to write notes in! AND get a free vinyl sticker

MARBLE NOTEBOOK



\$10.83

TO PURCHASE ANY OF THESE ITEMS CONTACT:

PBS-SEPM office (432) 279-1360 or info@pbs-sepm.org and available at all Luncheons

Payment: check, cash or online with credit card

Make checks payable to PBS-SEPM & send order form to: PBS-SEPM, 2900 Front St, Midland, TX, 79701

To purchase online, click [HERE](#) and pay with credit card

PBS-SEPM Publications

PBS-SEPM PUBLICATION HIGHLIGHT



“Sequence Stratigraphy, Facies & Reservoir Geometries of the San Andres, Grayburg

91-32

\$8.75 Members \$13.13 Non-Members



**Great
Resource for
your library**



Entire PBS-SEPM publication library (1955 – 2007)

There is a fully searchable Table of Contents—find a topic or author just by typing in the word(s). All publications are in Adobe PDF with all major articles being bookmarked, and all the figures are linked in the text for quick reference. Those areas that are off limits to geologists like the Glass Mountains or Sierra Diablos have been written up in these publications. Numerous out-of-print publications and figures and/or plates not published in the original guidebooks are now available in this library.

DVD I - Symposia & Guidebooks (1955-1989)

Member- \$125.00 plus 8.25% tax and \$5.00 shipping and handling
Non-Member- \$150.00 plus 8.25% tax and \$5.00 shipping and handling

DVD II - Symposia & Guidebooks (1990-2007)

Member- \$125.00 plus 8.25% tax and \$5.00 shipping and handling
Non-Member- \$150.00 plus 8.25% tax and \$5.00 shipping and handling

DVD III - Core Workshops (82, 83, 85, 98) & Special Publications (A, 88-28, 96-39, 84)

Member- \$125.00 plus 8.25% tax and \$5.00 shipping and handling
Non-Member- \$150.00 plus 8.25% tax and \$5.00 shipping and handling

Entire Set of three DVDs

Member Price \$275.00 plus 8.25% tax and \$5.00 shipping and handling
Non-Member Price \$300.00 plus 8.25% tax and \$5.00 shipping and handling

Payment: check, cash or online with credit card

Make checks payable to PBS-SEPM & send order form to: PBS-SEPM, 2900 Front St, Midland, TX, 79701

To purchase online, click [HERE](#) and pay with credit card

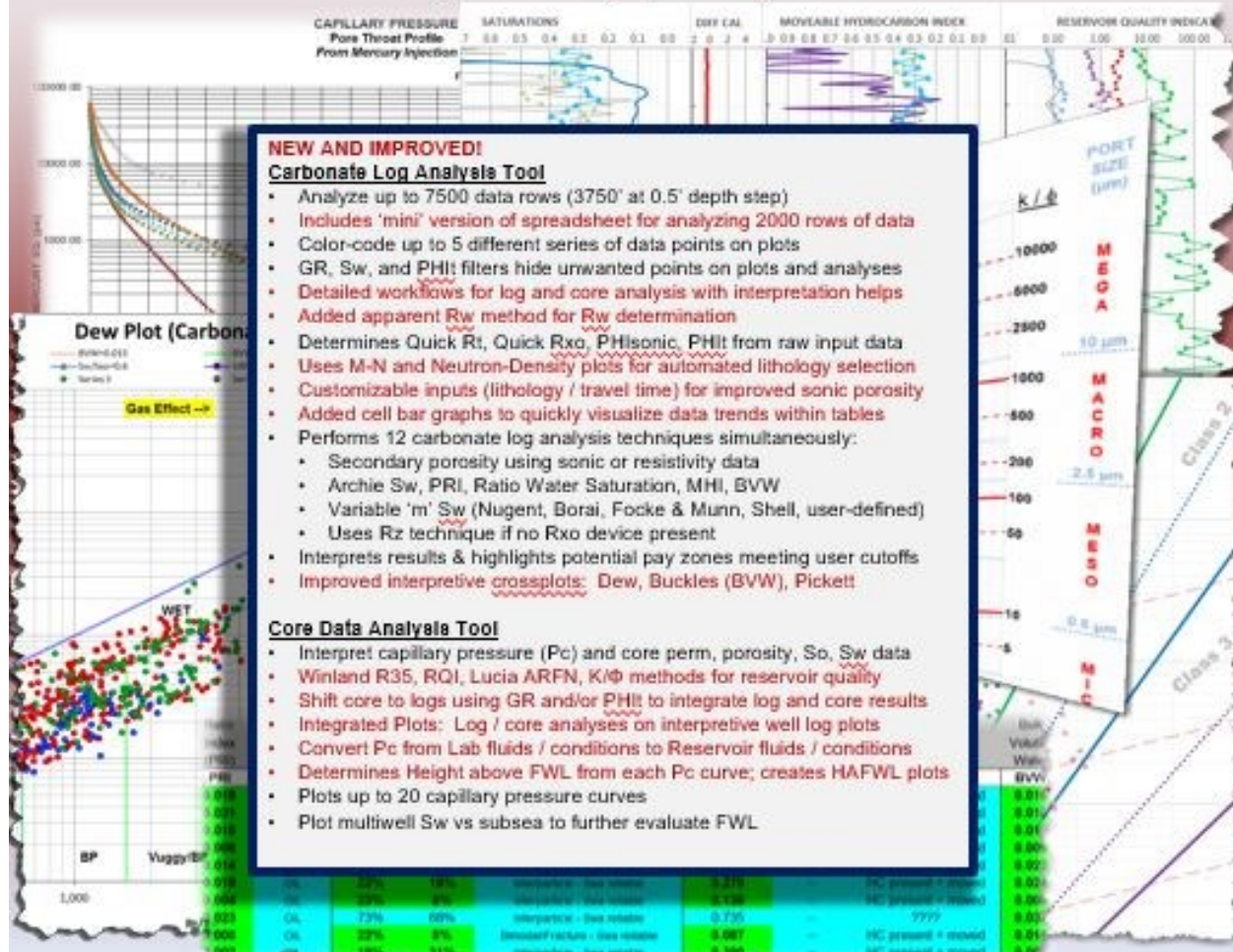
For additional information contact: **PBS-SEPM office** (432) 279-1360 or info@pbs-sepm.org



Carbonate Log & Core Analysis Spreadsheet v. 5.0 By Cory L. Hoffman, Ph.D.

Major Upgrade (January 2020)! [Designed for Microsoft Excel 2013]

Carbonate Log analysis draws heavily upon teachings of George Asquith
Core Data analysis draws heavily upon teachings of Dan Hartmann



Your business logo can go here

Check out the sponsorship levels so you can highlight your business here. Click [here](#) to learn more on how to advertise your business

Sponsorship Information (2022-2023)



Do you have an idea for an interesting luncheon talk? Have a core workshop you'd like to present? Have some suggestions on how PBS-SEPM can better serve the geologic community? Send us an e-mail to share your idea, your PBS-SEPM Executive Board wants to hear from you!

Become a PBS-SEPM Sponsor and help support your local chapter

The PBS-SEPM hosts luncheon lectures, core workshops and field trips. We bring in guest speakers from all over the country to discuss current geological topics. Our lecture series, along with core workshops class, and field trips are led by experts in their chosen areas of geosciences.

PLATINUM – Your generous support of **\$1500 or more** will provide your company with recognition for two years on the Young Professional Field Trip (YPFT) (including guidebooks and other paraphernalia), core workshops, PBS-SEPM monthly luncheon slides, newsletters, website, and new publications.

GOLD – Your generous support of **\$1000** will provide your company with the same level of recognition as above for one year, excluding new publications.

SILVER – Your generous support of **\$700** will provide your company with recognition for one year on the core workshop/one day field trip (including guidebooks), PBS-SEPM monthly luncheon slides, newsletters, and website.

BRONZE – Your generous support of **\$400** will provide your company with recognition for one year on all PBS-SEPM monthly luncheon slides, newsletters, and website.

ALUMINUM – Your generous support of **\$250** will provide your company with recognition for one year on all PBS-SEPM luncheon slides and table tent for one luncheon date.

INDIVIDUAL – Your generous support of **\$50** will provide your business card advertised for one year on the PBS-SEPM website and each newsletter.

PBS- SEPM Sponsorships year: June 2021 to May 2022

If you or your organization would like to support the PBS-SEPM's efforts., then please contact us at

PBS-SEPM 2021-2022 Board Members



Daniel Scott
President
dsconfig@sm-energy.com



David Shoore
President-Elect
shoore@gmail.com



Norman E. Wells, Jr.
1st Vice President
nwellsgeac@gmail.com



Katrina Soundy
2nd Vice President
katrina.soundy@chevron.com



Ashton F. Bruyere
Treasurer
afaulkners@berryll.com



Laura M. Vargas
Secretary
lvargas716@yahoo.com



PBS-SEPM
2900 Front St,
Midland, TX, 79701

Web: www.pbs-sepm.org
Phone: 432-279-1360
Fax: 432-683-8739
Email: info@pbs-sepm.org

If you are
interested in a
sponsorship
opportunity,
please call
PBS-SEPM for
more details at
(432) 279-
1360 or
e-mail
info@pbs-sepm.org.

Scholarships & Distinguished Lecturer Fund

Robert Read Distinguished Lecturer Fund

- The Robert Read Distinguished Lecturer Fund was founded to honor a bright, young geologist who had been an active member of both PBS-SEPM and WTGS and was tragically killed by a drunk driver. Donations from various members of both societies contributed to a membership donation fund that both encourages our continuing education efforts by helping offset the cost of bringing in a distinguished lecturer, usually in geosciences, but not required. With these funds, we will bring our members and community a distinguished lecturer to present at a dinner event.

Wendell J. Stewart Scholarship Fund

- The Wendell J Stewart fund is named for the famous sequence stratigrapher, was initially funded by the family, and then later through PBS-SEPM members who have contributed over the years. In the past, the scholarship was established to award high school students intending to pursue a college education in the geoscience field (declared major), and had evolved to include college students actively pursuing a geology degree when there were no other qualified candidates. Funding for this scholarship has waxed and waned over the years with the changes of the petroleum industry and because this scholarship was set up in such a manner that only the interest can be used to distribute funds, most scholarships in the last 30 years have been awarded through the PBS-SEPM main budget and not the scholarship fund. As of 2021, a resolution was passed by the executive board that allows funds to be distributed from the scholarship fund.

Sue Tomlinson Reid Scholarship Fund

- The Sue T. Reid Scholarship was ratified June 1, 2021. This scholarship is named in honor of an excellent paleontologist who was a pioneer of women in geosciences. This scholarship will be focused on helping honor Sue's memory by supporting women at the university level who are aiming for careers in Earth Science. Funding for this scholarship will be through contributions from members and sponsors of PBS-SEPM.

Corporate Sponsorships (2021-2022)

PBS-SEPM is grateful for the generosity of these fine corporate sponsors !

Platinum Sponsor



BERYL
OIL AND GAS



Your
Company
Logo
could be in
our
newsletter
showing
your
support of
PBS-
SEPM.

Individual Sponsors of PBS-SEPM (2021-2022)



TRAVCON
Geology

Consulting
PETRA
Prospects

Darrell Mauldin
Petroleum Geologist

401 Cypress St., Suite 602
Abilene, Texas 79601

(325) 677-4100
Fax (325) 677-4102
darrellm@travconexp.com



MARS EXPLORATION AND ENERGY, LLC

Michael A. Raines, President
CPG #6308, TxBPG #1506

Contract Reservoir Geology Services

Mike@MarsExp.com
(432) 934-7202

- Waterflood Studies
- Enhanced Oil Recovery
- Carbon Sequestration
- Conventional Reservoirs
- General Permian Basin

1300 South County Rd 1117
Midland, Texas 79706

Individual sponsors are advertised on the PBS-SEPM website and each newsletter. Cost is \$50/year. If you are interested in a sponsorship opportunity, please call PBS-SEPM for more details at (432) 279-1360 or email info@pbs-sepm.org.



STRATUM
RESERVOIR

DAWN PORTER
Account Manager

7409 W. Industrial Ave
Midland, TX 79706

5200 N Sam Houston Pkwy W #500
Houston, TX 77086

+1 (346) 222-0020 C

dawn.porter@stratumreservoir.com
www.stratumreservoir.com

GEO MARK

Stephanie E. Perry

Chief Petrophysical Advisor

Petrophysics Consultant

(832) 532-1028 (Office)

(518) 428-7130 (Cell)

www.geomarkresearch.com

9748 Whithorn Drive, Houston, Texas 77095



Norman E. Wells, Jr.

Owner / Geologic Consultant

Knotten Oil Consultants, LLC

Colorado City, TX

+1 (432) 556-5259

normwells@knottenoil.com

www.knottenoil.com

