



*"We are like a judge  
confronted by a  
defendant who  
declines to answer,  
and we must  
determine the truth  
from the  
circumstantial  
evidence."*

— Alfred Wegener

#### Inside this issue:

**LUNCH VENUE:** 2  
**Midland College**  
**3600 N. Garfield**  
**Carrasco Room**

**PBS-SEPM August Luncheon**, Speaker: Dr. Lynn Soreghan, Title: Eolian-Transported Dust in the Permian Basin of the Western U.S.—Implications for Paleoclimate and Source-Rock Formation

**PBS-SEPM Publication:** 3  
DVD order form

**Meet your newly elected Executive Board for 2017-2018!** 4

**PBS-SEPM Publication:** 6  
**\*NEW\*** Carbonate Well Log & Core Data Analysis Spreadsheet v. 4.0 (\$40)

**PBS-SEPM Executive Board 2016-2017** 7

Individual Sponsors 8  
About PBS-SEPM

# PBS-SEPM NEWSLETTER



**AUGUST 2017**

## President's Column

I hope you are enjoying your last few weeks of summer as everyone starts preparing for the fall. Your board has been preparing for the new fiscal year and will continue to build on the great foundation set by the 2016-2017 Executive Board.

I wish to thank our previous President, Cory Hoffman, for his leadership in reorganizing the society. There was a lot of work behind the scenes to get this accomplished. I would also like to thank last years Executive Board and committee members, with your dedication and commitment to the PBS-SEPM we have truly built a great foundation for the society that will endure into the future.

I would like to re-introduce our newly elected Board. **Mo-hamed Zobaa** (President Elect), **Robert Campbell** (1st VP), **Curtis Helms** (2nd VP), **Brice Otto** (Treasurer), and **Bryce Swinford** (Secretary) will constitute the remainder of the Executive Committee. Their biographies are included on pages 4-5 of this Newsletter. I would like to thank each of them for volunteering to server the board and assist me building up the society.

For the first meeting of the fiscal year we are excited to have Dr. Lynn Soreghan from the University of Oklahoma. She will be discussing Eolian Transported Dust in the Permian of the Western US—Implications for Paleoclimate and Source-Rock Formation. This seems a fitting first talk as we see this kind of deposition everyday in the West Texas Wind.

I look forward to seeing each of you at our first luncheon meeting on Tuesday, August 15 at the Carrasco Room of Midland College. Please register for that luncheon ASAP via e-mail, phone, or our website.

*James L. Hawkins*

**PBS-SEPM President**  
**2017-2018**

**Web:** <http://www.pbs-sepm.org>

**E-Mail:** [info@pbs-sepm.org](mailto:info@pbs-sepm.org)

**Phone:** (432) 279-1360

**Mailing Address:**

**P.O. Box 6054**

**Midland, TX 79704**

## Mark Your Calendars! [PBS-SEPM luncheons at Carrasco Room, Midland College]

### AUGUST 2017

• **8: WTGS Luncheon:** (11:30am-1pm) **Speaker:** Dr. Shane Prochnow, Chevron- Midland Country Club. **Title:** "Spatial Continuity and Surveillance Recommendations in the Permian Basin Tight Rock Wolfcamp"

• **15: PBS-SEPM Luncheon:** (11:30am-1pm) **Speaker:** Dr. Lynn Soreghan, Univ. of Oklahoma, **Title:** "Eolian-Transported Dust in the Permian Basin of the Western U.S.—Implications for Paleoclimate and Source-Rock Formation"

### SEPTEMBER 2017

• **19: PBS-SEPM Luncheon:** (11:30am-1pm) **Speaker:** Dr. Kent Condie, New Mexico Tech **Title:** The Beginning of Plate Tectonics

## PBS-SEPM Luncheon Talk – August 15, 2017

**Lynn Soreghan, Ph.D.**

University of Oklahoma

### *“Eolian-Transported Dust in the Permian of the Western US— Implications for Paleoclimate and Source-Rock Formation”*

Tuesday August 15, 2017 - Midland College, Carrasco Room, 11:30 a.m.

#### Abstract

Eolian-transported clastic (including dust or “loess”) deposits are well known as both an archive and agent of climate change for Earth’s recent record, especially of the past few million years. But dust deposits are increasingly recognized in Earth’s deep-time record, especially from ~300 Million years ago— a well-known “icehouse” with widespread glaciation analogous to today’s planet. Oddly, dust deposits in low paleolatitudes from this time (western-midcontinent U.S.) are the thickest known from any time in the history of the planet. Data indicate that dust deposition pulsed on a glacial-interglacial timescale, and was sourced from regions that included the (tropical) Central Pangaeian Mountains. Even the coarser-grained units of the Delaware Mountain Group exhibit sourcing from the east and southeast. The equatorial setting of all this eolian material is remarkably unusual relative to the Cenozoic, signaling an oddly dusty tropical atmosphere, and requires semi-arid to arid conditions at the source, and a glacial-interglacial modulation of sourcing. Climate modeling (Community Climate System Model v.3) suggests that cold tropical climate with upland glaciation represents one scenario capable of replicating the conditions necessary for dust generation and mobilization from the Central Pangaeian Mountains. Notably, the voluminous atmospheric dust stimulated productivity in the marine and terrestrial biosphere, thus affecting biogeochemical cycling and source-rock development. The latter represents a real example of what many suggest as a geoengineering approach to control future CO<sub>2</sub> emissions.



#### Biography

Dr. Lynn Soreghan is the James Roy Maxey Professor of Geology in the School of Geology & Geophysics, University of Oklahoma. Lynn uses sediments to interpret Earth’s “deep-time” climate. Much of her research focuses on the world of ~300 million years ago, as this interval captures the global mountain building and remarkable climates associated with the supercontinent Pangaea. Lynn also studies ancient “dust” deposits to understand Earth’s ancient atmosphere and climate. She earned her B.S.

(Geology, 1986) at UCLA, and her PhD (Geology, 1992) at the University of Arizona, and subsequently worked at Amoco Production Company before joining (in 1996) the faculty of the University of Oklahoma.

“In rivers, the water that you touch is the last of what has passed and the first of that which comes; so with present time.”

— Leonardo da Vinci  
(1452 - 1519)

“You cannot teach a man anything; you can only help him discover it in himself.”

— Galileo Galilei  
(1564 - 1642)  
Italian physicist, mathematician, engineer, astronomer, and philosopher.

## PBS-SEPM Publications



### **PBS-SEPM Symposia And Core Workshops on 3 DVDs**



This is your opportunity to have the entire **PBS-SEPM** publication library (1955 – 2007) at your finger tips. There is a fully searchable Table of Contents—find a topic or author just by typing in the word(s). All publications are in Adobe PDF with all major articles being bookmarked, and all the figures are linked in the text for quick reference. Those areas that are off limits to geologists like the Glass Mountains or Sierra Diablos have been written up in these publications. Numerous out-of-print publications and figures and/or plates not published in the original guidebooks are now available in this library.

This includes all publications, even the special publications and coveted core workshops. Can you imagine the hidden treasures you might find? Here is your chance to uncover them in this special three (3) DVD set. *Buy one or all.*

#### **DVD I - Symposiums & Guidebooks (1955-1989)**

Member- **\$75.00** plus 8.25% tax and \$5.00 shipping and handling

Non-Member- **\$100.00** plus 8.25% tax and \$5.00 shipping and handling

#### **DVD II - Symposiums & Guidebooks (1990-2007)**

Member- **\$75.00** plus 8.25% tax and \$5.00 shipping and handling

Non-Member- **\$100.00** plus 8.25% tax and \$5.00 shipping and handling

#### **DVD III - Core Workshops (82, 83, 85, 98) & Special Publications (A, 88-28, 96-39, 84)**

Member- **\$75.00** plus 8.25% tax and \$5.00 shipping and handling

Non-Member- **\$100.00** plus 8.25% tax and \$5.00 shipping and handling

#### **Entire Set of three DVDs**

**Member Price** **\$200.00** plus 8.25% tax and \$5.00 shipping and handling

**Non-Member Price** **\$250.00** plus 8.25% tax and \$5.00 shipping and handling

**Name:** \_\_\_\_\_ **Company/Affiliation:** \_\_\_\_\_

**Mailing Address:** \_\_\_\_\_

**Business Phone:** \_\_\_\_\_ **Fax:** \_\_\_\_\_ **Email:** \_\_\_\_\_

Payment: check, cash or credit card

( ) I authorize you to charge the above to my:

( ) MasterCard ( ) VISA ( ) American Express Exp. Date: \_\_\_\_\_

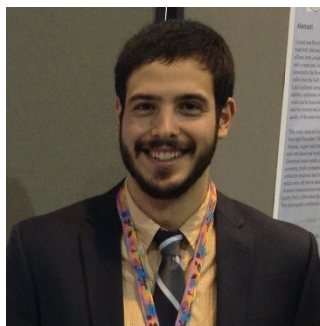
**Card number:** \_\_\_\_\_ **Signature:** \_\_\_\_\_

Make checks payable to **PBS-SEPM**.

Please send registration and payment information: PBS-SEPM, P.O. Box 6054, Midland, TX 79704

For additional information **contact: PBS-SEPM office** (432) 279-1360 or [info@pbs-sepm.org](mailto:info@pbs-sepm.org).

## YOUR 2017-2018 EXECUTIVE COMMITTEE!



### Treasurer

#### **Brice A. Otto**

**Title:** Geologist

**Company:** Double Eagle Energy Operating III LLC—Fort Worth TX

**Education:** 2015, M.S. Geology, Oklahoma State University; 2013, B.S. Geology, University of Tulsa

**Memberships:** AAPG, GSA, Geochemical Society, PBS-SEPM, WTGS

**Activities:** AAPG Student Chapter Treasurer (2014-2015) and Interim VP (2015), Boone Pickens School of Geology – Oklahoma State University, PBS-SEPM Treasurer 2016-17



### Secretary

#### **Bryce Swinford**

**Title:** Geophysicist

**Company:** Concho Resources, Midland TX

**Education:** 2012 MSc. Applied Geophysics, IDEA League Joint Masters; 2007 BSc. Geophysical Engineering, Colorado School of Mines

**Memberships:** SEG, WTGS, PBS-SEPM, PBGS

**Activities:** Summer Mimmers, Midland Community Symphonic Band, PBS-SEPM Secretary 2016-17



### 2<sup>nd</sup> Vice President

#### **Curtis D. Helms, Jr.**

**Title:** Director

**Company:** Midland College PPDC, Midland TX

**Education:** 2011 M.S. Geology, The University of Texas of the Permian Basin;

2003 B.S. Biology, The University of Texas of the Permian Basin

**Memberships:** AAPG, AAPG-DPA, AAPG-SWS, FCGS, PBGS, PBPA, PBS-SEPM, RMAG, SIPES, SPE, SPE-ESG, TACE, WTGS

**Activities:** PBS-SEPM, 2<sup>nd</sup> VP 2016-2017, Past President 2015-2016, MEL Board 2014 - Present, AAPG-SWS Secretary 2014-2015, PBS-SEPM President 2014-2015, WTGS 2015 Symposium Field Trip Chair, WTGS Luncheon Chair 2013-2014, WTGS 2014 Symposium Co-Techinal Chair, WTGS 2014 Field Trip Chair, PBS-SEPM President Elect 2013-2014, PBS-SEPM Luncheon Chairman 2011-2014, PBS-SEPM Secretary 2012-2013, PBS-SEPM Treasurer 2011-2012, WTGS Judge 2010 Annual Symposium

**Honors:** PBS-SEPM Volunteer of the Year 2013-2014, PBS-SEPM Volunteer of the Year 2011-2012



## YOUR 2017-2018 EXECUTIVE COMMITTEE!

### 1<sup>st</sup> Vice President



**Robert Campbell**

**Title:** Independent

**Company:**

**Education:** 1976 B.S. & M.S. Petroleum Engineering, University of Texas

**Memberships:** PBS-SEPM, WTGS, SPE

**Activities:** PBS-SEPM 1<sup>st</sup> Vice President 2009-10, Engineering Mentor-PBS-SEPM Young Professional Field Trip 2008-Present

**Honors:** PBS-SEPM Dedicated Service Award 2014, PBS-SEPM Volunteer of the Year 2010

### President-Elect



**Dr. Mohamed K Zobaa**

**Title:** Senior Lecturer of Geology

**Company:** University of Texas of the Permian Basin

**Education:** PhD in Geology and Geophysics, Missouri University of Science and Technology, 2011; MS in Geology, Benha University, Egypt, 2006; BS in Geology, Benha University, Egypt, 2000

**Activities:** AASP-The Palynological Society Board of Directors (2012-2015); Organizer and Instructor, Geology Field Camp Benha University, Egypt (2013, 2014); Co-organizer and Presenter, 1st Geoscience Symposium, UTPB, Odessa, TX (April, 2017); Co-organizer and Presenter, 2nd International Workshop on: Applications of Palynology in Oil and Gas Exploration, Alexandria University, Egypt in collaboration with Missouri S&T, USA (March, 2012); Vice President of the Islamic Center of Rolla Missouri (ICRM), USA (2010-2011); President, ICRM, USA (2009-2010);

**Memberships:** GSA, Egyptian Syndicate of Scientific Professions,

### President

**James Hawkins**

**Title:** Senior Petrophysicist

**Company:** Apache Corporation

**Education:** M.S. Geology, Univ. of Texas of the Permian Basin, 2005; B.S., Univ. of Texas of the Permian Basin, 1993

**Activities:** 26 Years Oil & Gas Experience in Permian Basin; Current Vice President SPWLA (2016); Past President SWPLA Permian Basin (2015), PBS-SEPM President-Elect 2016-17

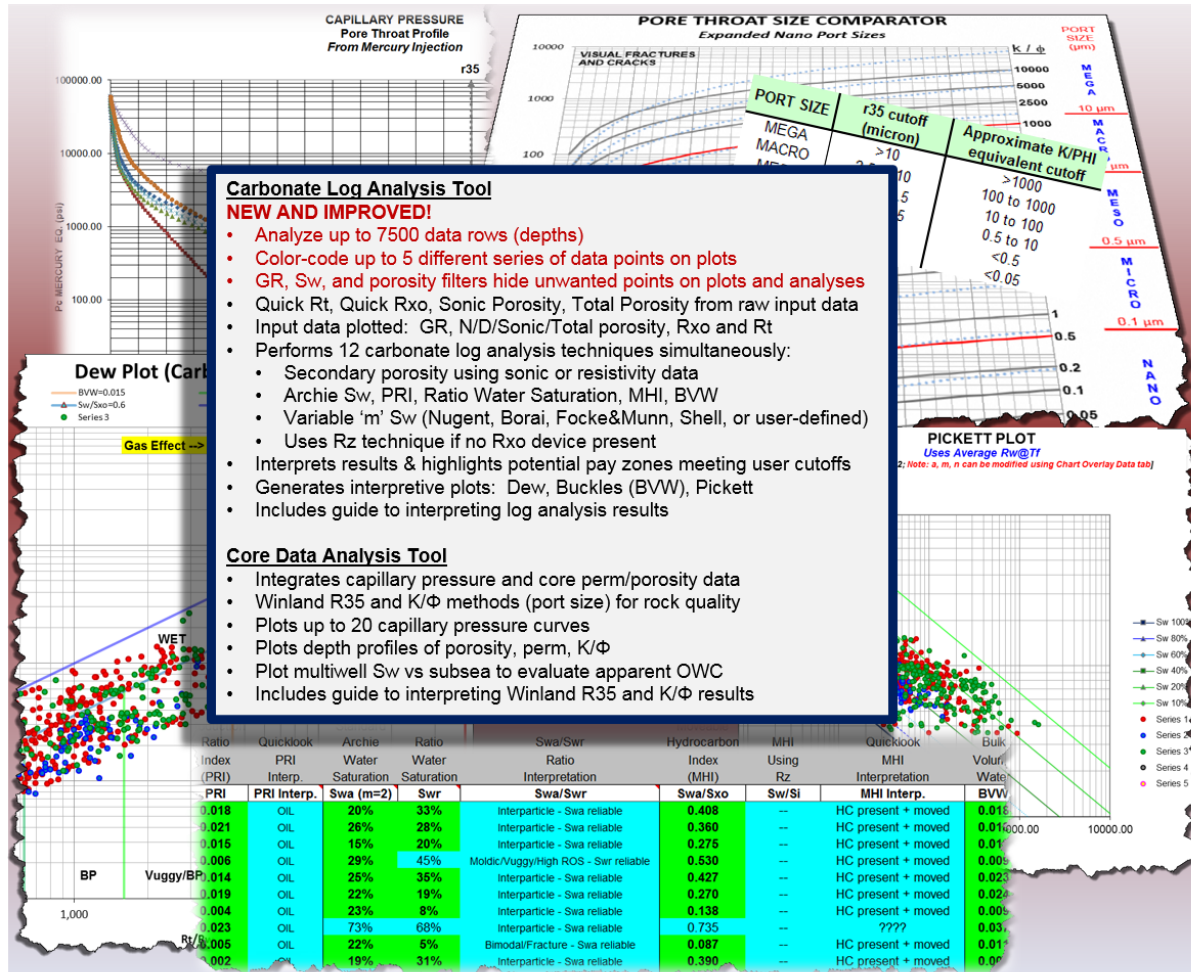
**Memberships:** AAPG, PBS-SEPM, SEPM, WTGS, APGE, SPWLA, SPWLA Permian Basin, SPE





# PBS-SEPM Publication Carbonate Log Analysis Spreadsheet v. 4.0

By: Cory L. Hoffman  
Designed for Microsoft Office Excel 2013



**INTRODUCTORY PRICE: \$40** (all proceeds go directly to PBS-SEPM)

- Get 2 tools for 1 low price — spreadsheet includes carbonate log analysis AND core data analysis tools
- Flash drive contains current version (Excel 2013; v. 4.0) and previous version (Excel 2010; v. 3.2) of spreadsheet
- Price includes free upgrades within version class (v. 3, v.4, etc.) for each registered user

Quantity: \_\_\_\_\_ Total: \$ \_\_\_\_\_ (plus 8.25% sales tax; add \$5 for shipping/handling if mailing required)

Name: \_\_\_\_\_ Company/Affiliation: \_\_\_\_\_

Mailing Address: \_\_\_\_\_

Business Phone: \_\_\_\_\_ Fax: \_\_\_\_\_ Email: \_\_\_\_\_

Payment: check, cash or credit card

( ) I authorize you to charge the above (plus shipping if applicable) to my:

( ) MasterCard ( ) VISA ( ) American Express Exp. Date: \_\_\_\_\_

Card number: \_\_\_\_\_ Signature: \_\_\_\_\_

Make checks payable to PBS-SEPM.

Please send registration and payment information: PBS-SEPM, P.O. Box 6054, Midland, TX 79704

For additional information contact: PBS-SEPM office (432) 279-1360 or [info@pbs-sepm.org](mailto:info@pbs-sepm.org).

## PBS-SEPM Executive Board (2017-2018)

<b>President:</b>	James Hawkins	<a href="mailto:james.hawkins@apachecorp.com">james.hawkins@apachecorp.com</a>
<b>President-Elect:</b>	Mohamed Zobaa	<a href="mailto:zobaa_m@utpb.edu">zobaa_m@utpb.edu</a>
<b>First Vice President:</b>	Robert Campbell	<a href="mailto:nebularc@yahoo.com">nebularc@yahoo.com</a>
<b>Second Vice President:</b>	Curtis Helms Jr.	<a href="mailto:chelms@midland.edu">chelms@midland.edu</a>
<b>Treasurer:</b>	Brice Otto	<a href="mailto:Botto@deeh.com">Botto@deeh.com</a>
<b>Secretary:</b>	Bryce Swinford	<a href="mailto:bswinford@concho.com">bswinford@concho.com</a>
<b>Previous President:</b>	Cory L. Hoffman, Ph.D.	<a href="mailto:choffman@sm-energy.com">choffman@sm-energy.com</a>
<b>Board Advisor:</b>	TBD	

---

*Do you have an idea for an interesting luncheon talk? Have a core workshop you'd like to present? Have some suggestions on how PBS-SEPM can better serve the geologic community? Just click on the e-mail above & drop us a note, your PBS-SEPM Executive Board wants to hear from you!*

---

*"Science is facts; just as houses are made of stone, so is science made of facts; but a pile of stones is not a house, and a collection of facts is not necessarily science."*

- Jules Henri Poincaré  
(1854-1912)  
French mathematician

## Corporate Sponsorships (2017-2018)

*Your Company Logo could be in this space showing your support of PBS-SEPM.*

*Your support lifts your corporate name within the Permian Basin.*



**PBS-SEPM is grateful for the generosity of these fine corporate sponsors !**

*"No one is useless in this world who lightens the burden of it for someone else"*

- Benjamin Franklin

If you are interested in a sponsorship opportunity, please call PBS-SEPM for more details at (432) 279-1360 or e-mail [info@pbs-sepm.org](mailto:info@pbs-sepm.org).



PBS-SEPM  
P.O. Box 6054  
Midland, TX 79704

Phone: 432-279-1360  
Fax: 432-683-8739  
Email: [info@pbs-sepm.org](mailto:info@pbs-sepm.org)

**We're on the Web!**  
**[www.pbs-sepm.org](http://www.pbs-sepm.org)**

“..In reply, I can only plead that a discovery which seems to contradict the general tenor of previous investigations is naturally received with much hesitation.”

Charles Lyell,  
British Lawyer, Geologist,  
(1797 - 1875)

**PBS-SEPM is the Permian Basin Section of SEPM—the Society for Sedimentary Geology. However, you do not need to be a SEPM member or a geologist to join PBS-SEPM.**

**Our non-profit society relies entirely upon the efforts of dedicated volunteers to serve the geological community—primarily through educational events. These events include monthly luncheon talks, core workshops, annual field trips, and special geological publications. Additionally, we are involved on the college campuses—reaching out to future earth scientists through scholarships, discounted memberships, and offering full-time geology students the ability to participate in professional-grade field trips at little to no cost.**

**If you would like to join PBS-SEPM, visit our updated website ([www.pbs-sepm.org](http://www.pbs-sepm.org)) to learn more about us, download or fill out a membership form, and learn how to get involved.**

---

### **Individual Sponsors of PBS-SEPM (2017-2018)**

Individual sponsors are advertised on the PBS-SEPM website and each Newsletter. Cost is \$85/year. If you are interested in a sponsorship opportunity, please call PBS-SEPM for more details at (432) 279-1360 or e-mail [info@pbs-sepm.org](mailto:info@pbs-sepm.org).

### ***Your Business Card Could be here!***

Your card will be in every newsletter for one year from August to AUGUST, on the PBS-SEPM Website, and on the PowerPoint shown prior to every luncheon.

***“Volunteering is an excellent way to provide meaning in your life and help give back to your local community.”***

*Peter Muggeridge*